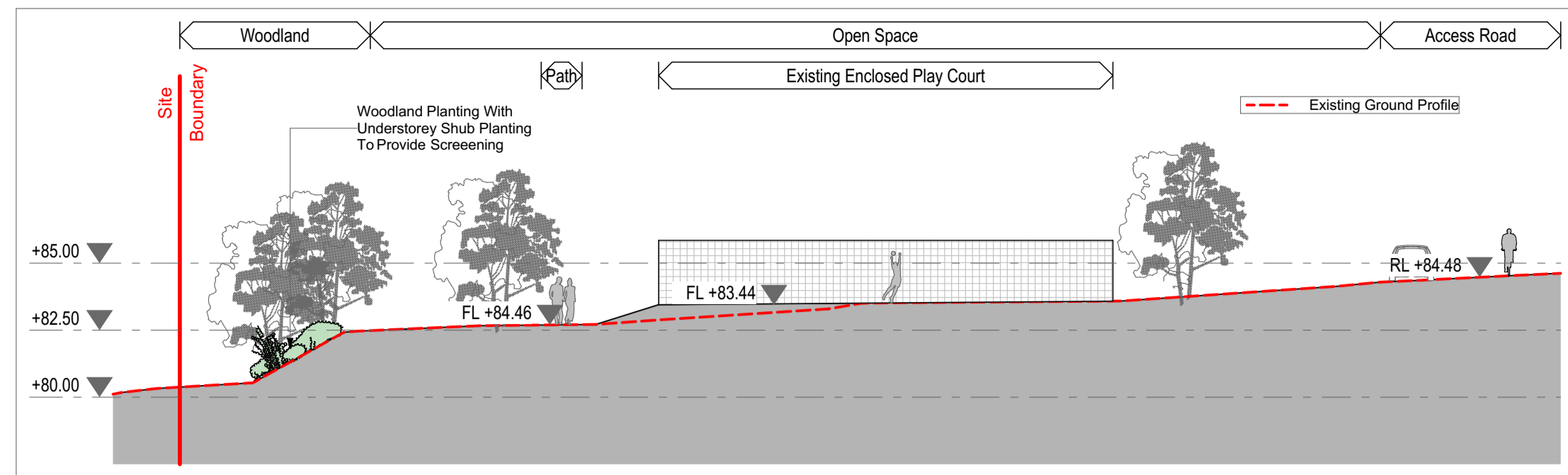
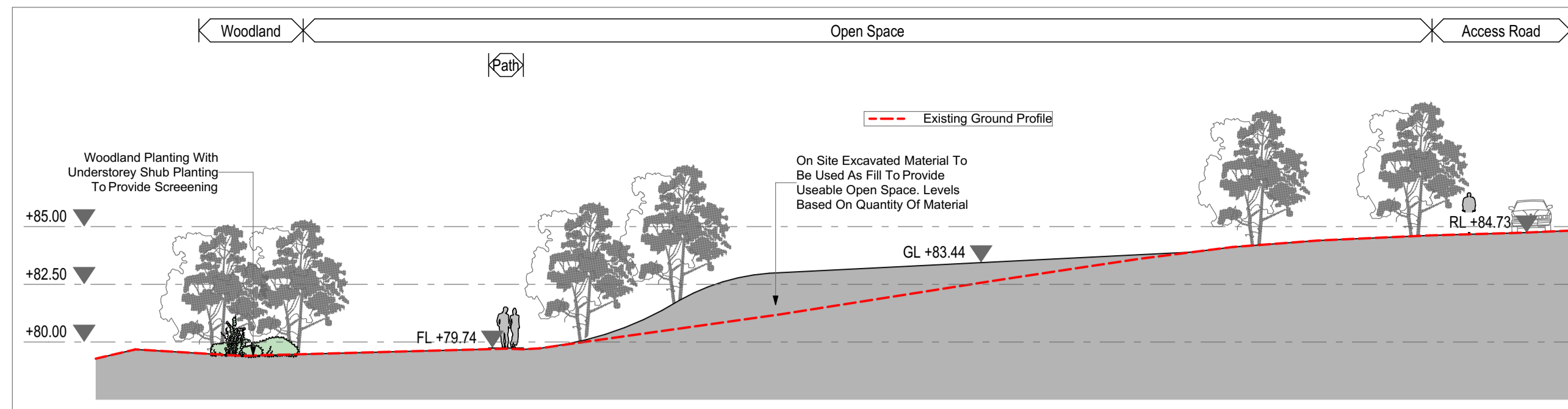


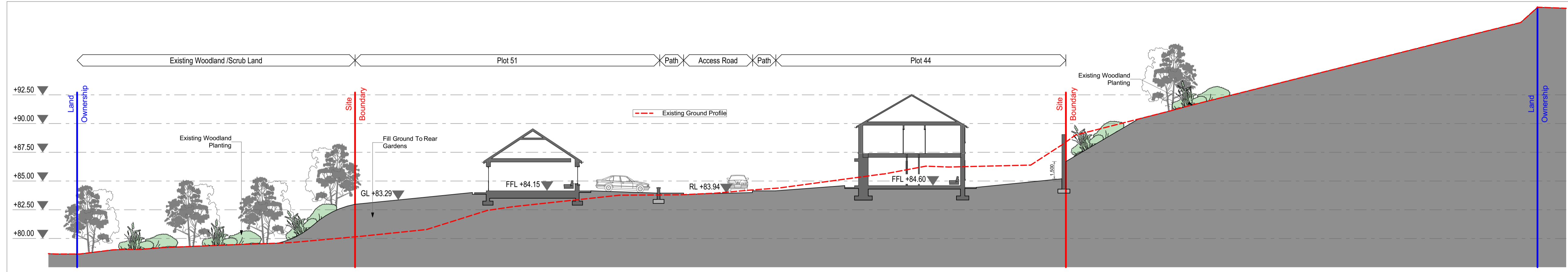
Notes
 This document and its design content is copyright ©. It shall be read in conjunction with all other associated project information including models, specifications, schedules and related consultants documents. Do not scale from documents. All dimensions to be checked on site. Immediately report any discrepancies, errors or omissions on this document to the Originator. If in doubt ASK.



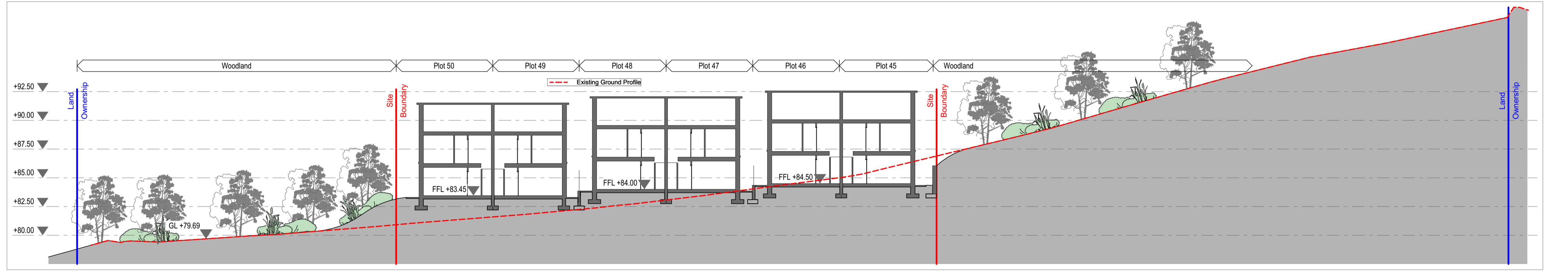
1 Site Section A-A 1:200



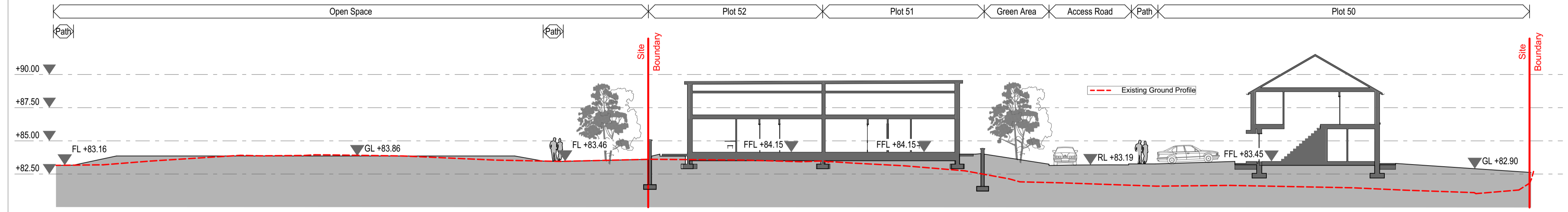
2 Site Section B-B 1:200



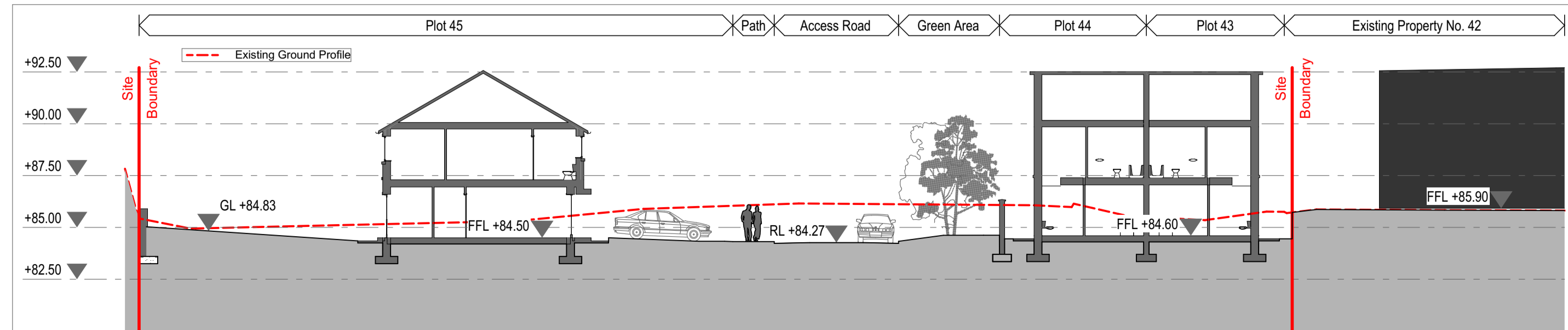
3 Site Section C-C 1:200



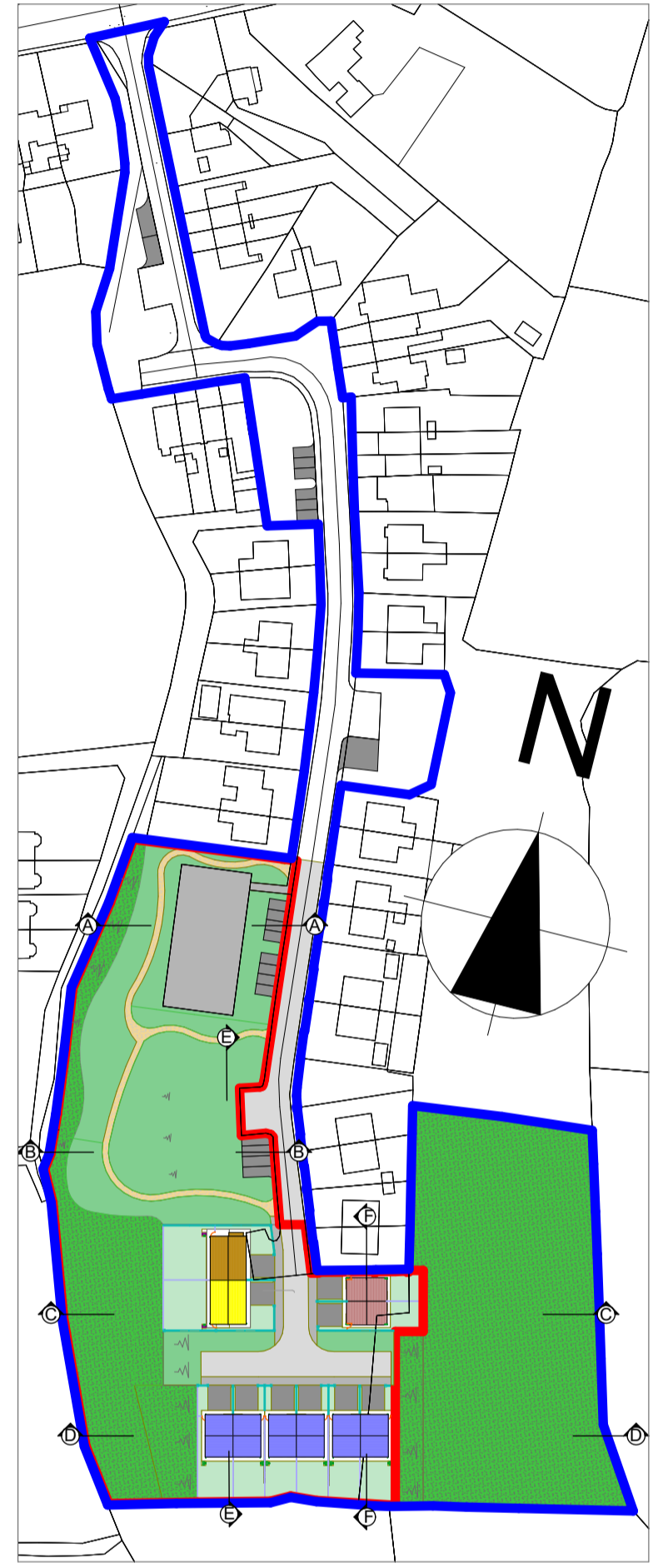
4 Site Section D-D 1:200



5 Site Section E-E 1:200



6 Site Section F-F 1:200



7 Key Plan 1:1500

Comhairle Chontae Liatroma
 Leitrim County Council

Rev	Issue Date	Description	Approved by

Purpose of Issue: **Planning**

Wynne Gormley Architects & Surveyors Ltd.

Proposed Housing Development
 Lahard, Ballinamore, Co. Leitrim
 Leitrim County Council

Scale of A1 1:200, 1:1500, 1:1	Dwg. no PL 20-006-030	Amend.
Date 21/12/2020	Description Site Sections	
Drawn by J. McDermott		
Checked by E. Gilsean		

21, Church View, Cavan
 T +353 49 43 61096
 F +353 49 43 62907
 E info@wggarchitects.ie
 W www.wggarchitects.ie