

**ARCHAEOLOGICAL SCREENING
ASSESSMENT
AT
LAHARD,
BALLINAMORE,
COUNTY LEITRIM**

**ON BEHALF OF:
LEITRIM COUNTY COUNCIL**

AUTHOR: JACQUI ANDERSON

DATE: JANUARY 2021

IAC PROJECT REF.: J3593

CONTENTS

CONTENTS	i
List of Figures.....	ii
List of Plates	ii
1 INTRODUCTION	1
1.1 General	1
1.2 The Development	1
2 RESULTS OF SCREENING ASSESSMENT	2
3 RECOMMENDATION FOR FURTHER STUDIES	5
4 REFERENCES.....	6

LIST OF FIGURES

- Figure 1 Site location
- Figure 2 Extract from archaeology.ie showing the proposed development area and nearby recorded monuments
- Figure 3 Extract from 25-inch OS map of 1907–9, showing the proposed development area

LIST OF PLATES

- Plate 1 Extract from Digital Globe aerial photography showing the proposed development area

1 INTRODUCTION

1.1 GENERAL

The following report details an initial archaeological screening assessment, which has been undertaken as part of a proposed residential development within the townland of Lahard, Ballinamore, County Leitrim (Figure 1, ITM 613619/811464). This assessment has been carried out in order to ascertain the potential impact of the proposed development on the archaeological and historical resource that may exist within the area and define whether further studies are required in order to identify any potential impacts. The assessment was undertaken by Jacqui Anderson of IAC Archaeology, on behalf of Leitrim County Council.

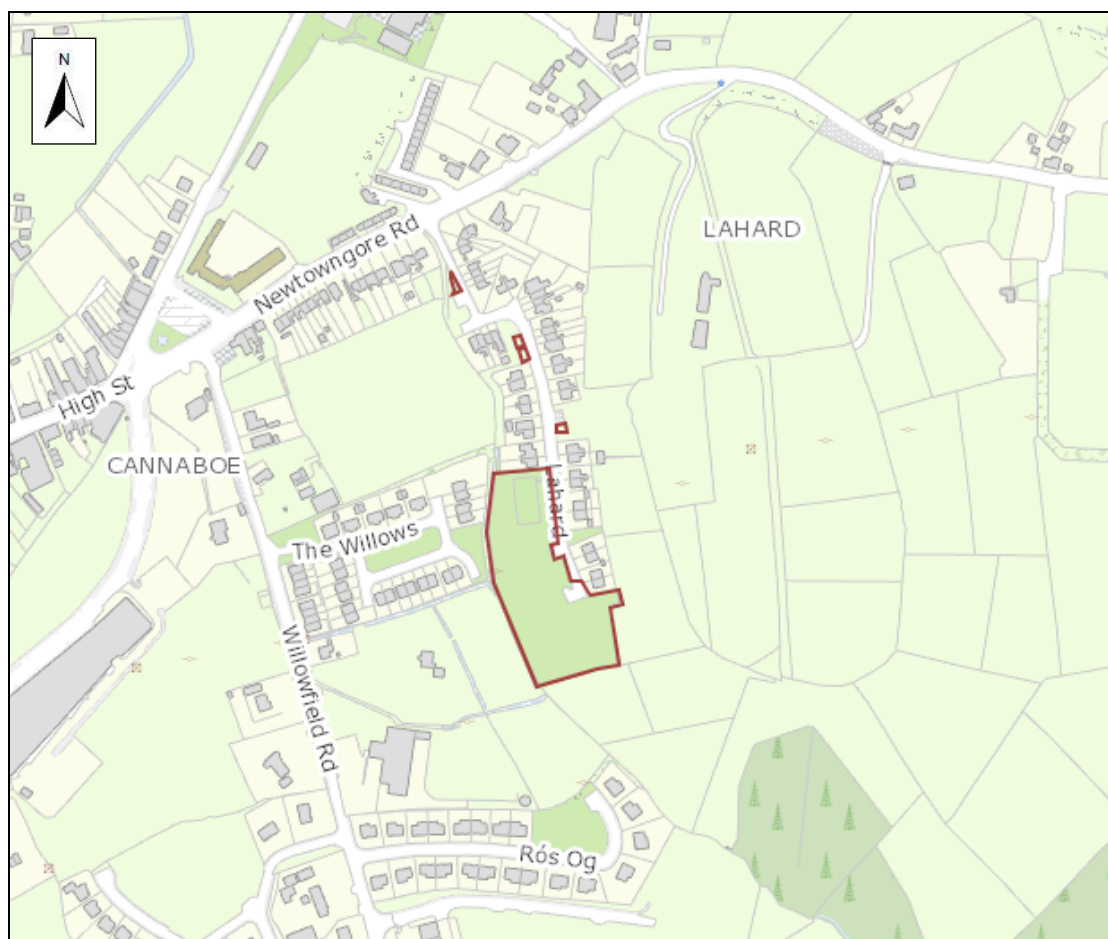


FIGURE 1: Site location

1.2 THE DEVELOPMENT

It is proposed to construct 10 no. fully serviced units consisting of 4 no. 2 bedroom units and 6 no. 3 bedroom units, provide an additional 23 car parking spaces at various locations throughout the existing housing development, connections to existing foul main, watermain and surface water discharge, landscaped open space and all ancillary and associated works at Lahard, Ballinamore, Co Leitrim.

2 RESULTS OF SCREENING ASSESSMENT

The proposed development area is located within the townland of Lahard, Ballinamore, County Leitrim. There are four recorded monuments within 500m of the site in addition to one redundant record (Figure 2). The nearest of these sites is a ringfort (LE025-035), c. 274m southwest of the proposed development area.

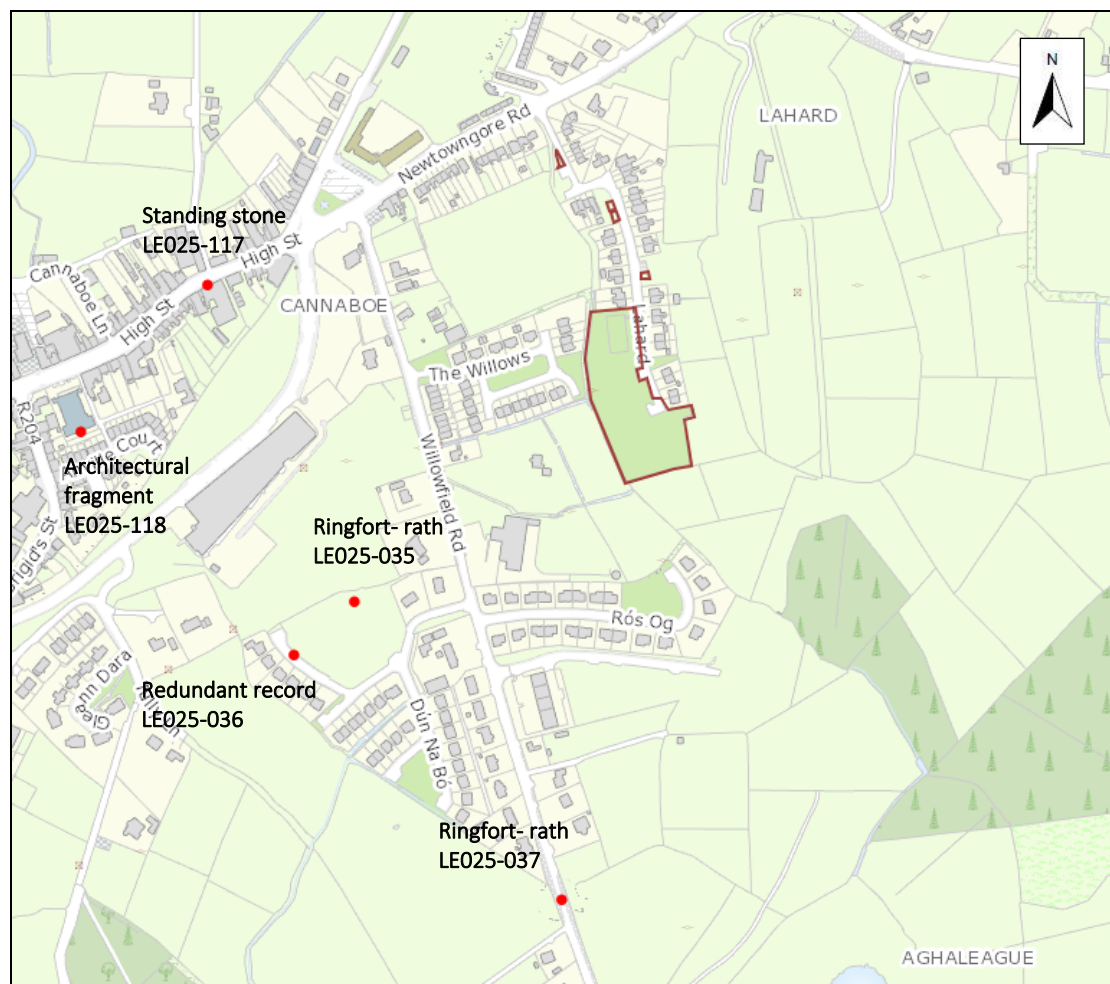


FIGURE 2: Extract from archaeology.ie showing the proposed development area and nearby recorded monuments

No previous archaeological investigations have taken place within the proposed development area. Monitoring and subsequent archaeological excavation under licence 04E1544 identified a gully, hearth and a number of shallow pits, at a site, c. 276m southwest of the proposed development area (Bennett 2004:0951, 2005:929). No datable remains were recovered from these features. A number of fragments of struck chert were recovered from the topsoil of the site. Archaeological testing under licence 04E1061 failed to reveal any feature or deposits of archaeological significance at a site c. 168m southwest of the proposed development area (Bennett 2004:0950).

The proposed development area is depicted in the cartographic sources as agricultural greenfield. The first edition OS map of 1835–6 shows few internal field

boundaries within the site, with the western boundary of the site representing the townland boundary between Lahard and Cannaboe. By the time of the 25-inch OS map 1907–9 the site has been subdivided with a number of field boundaries depicted but remains relatively unchanged (Figure 3).

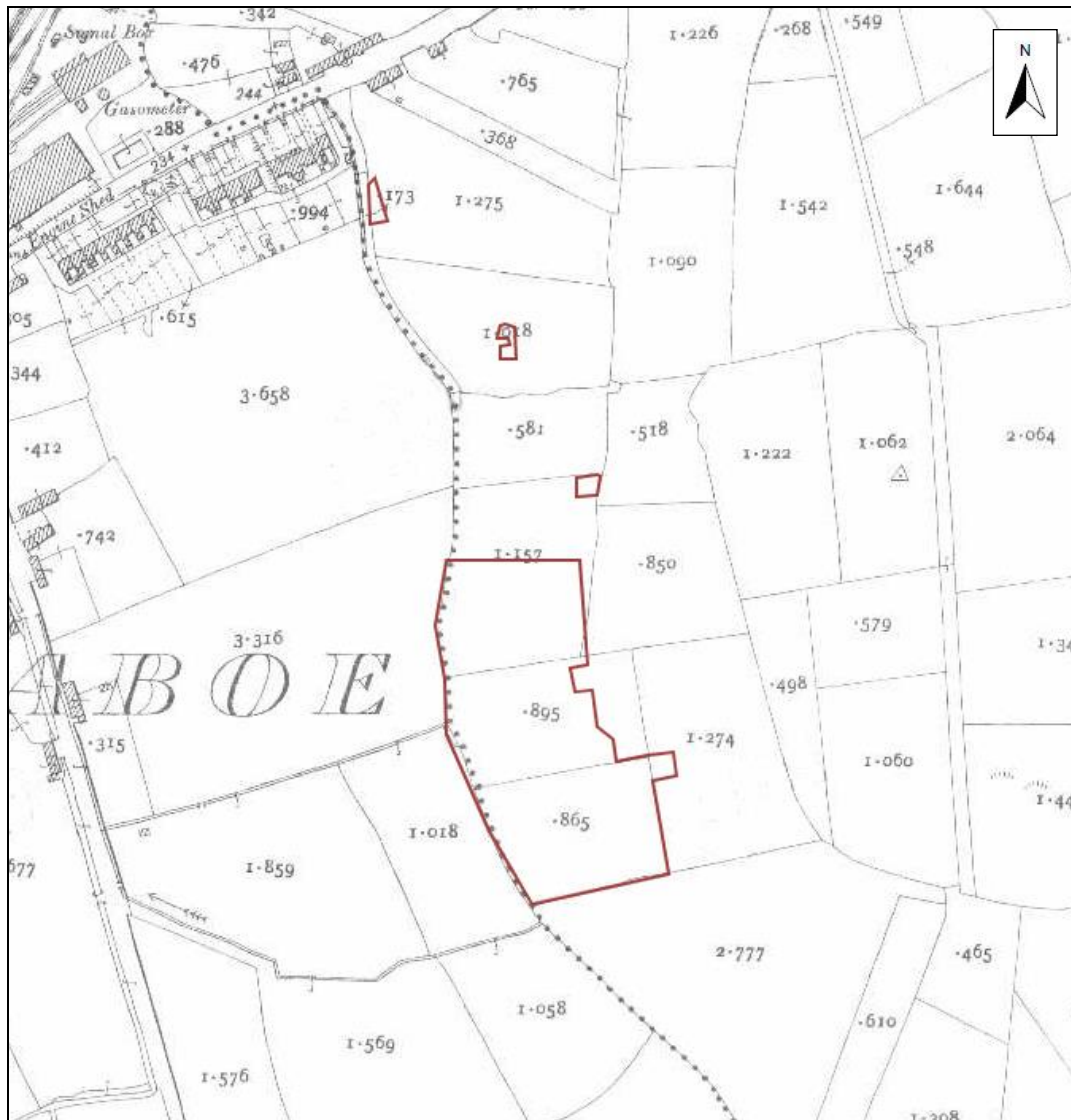


FIGURE 3: Extract from 25-inch OS map of 1907–9, showing the proposed development area

Examination of the available aerial photographs reveals the proposed development area is largely heavily vegetated scrub land (Plate 1). From 2000 (OSI) a basketball court occupied the northwest of the proposed development area. No previously unrecorded features of archaeological potential were identifiable from the aerial photography.

The proposed development is located on a steep slope and as such would not be considered as a desirable location for habitation. The northwest of the proposed development area has previously been disturbed by the construction of a basketball court. The site is considered to be of negligible archaeological potential.

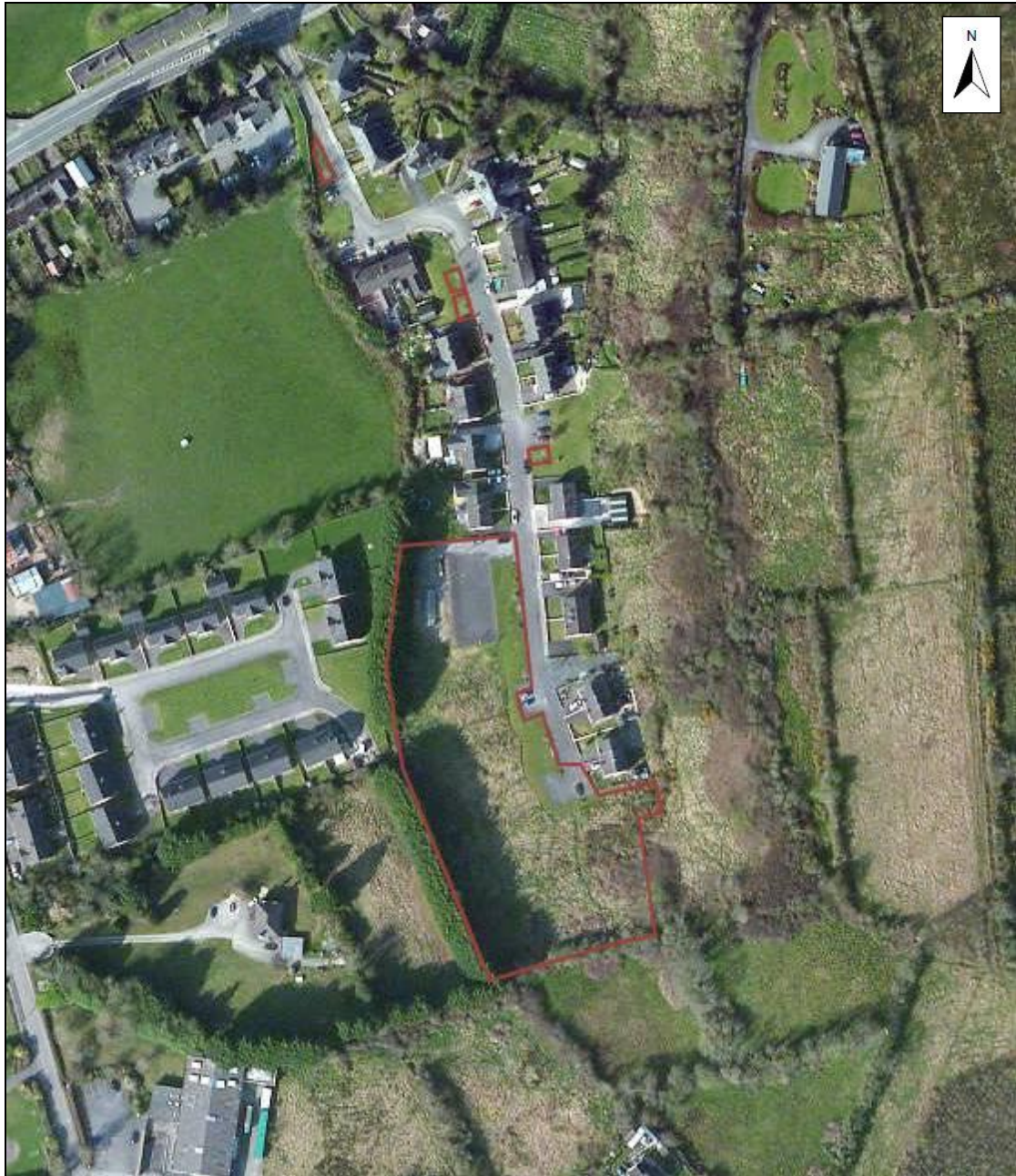


PLATE 1: Extract from Digital Globe aerial photography (2013) showing the proposed development area

3 RECOMMENDATION FOR FURTHER STUDIES

Given the low archaeological potential of the proposed development area, no further archaeological assessments or mitigation is deemed to be necessary in association with future development.

4 REFERENCES

Bennett, I. (ed.) 1987–2010 *Excavations: Summary Accounts of Archaeological Excavations in Ireland*. Bray. Wordwell.

National Monuments Service, the Department of Housing, Local Government and Heritage (DoHLGH). *Sites and Monuments Record*, County Leitrim.

Cartographic Sources

Ordnance Survey maps of County Leitrim 1835–6, 1907–9

Electronic Sources

www.excavations.ie – Summary of archaeological excavation from 1970–2019.

www.archaeology.ie – DoHLGH website listing all SMR sites with aerial photographs.

www.googleearth.com – Aerial photographs of the proposed development area.

www.bingmaps.com – Aerial photographs of the proposed development area.

www.heritagemaps.ie – The Heritage Council web-based spatial data viewer which focuses on the built, cultural and natural heritage.