

3D VISUALS BOOKLET

'Drumshanbo Town Centre Regeneration Project'





Figure 1. 3D Visual of the Regeneration Project from the Main Street



Figure 2. 3D Visual of the Regeneration Project - Aerial View



Figure 3. 3D Visual of the Regeneration Project – Aerial View from existing Carpark



Figure 4. 3D Visual of the Re-development Works to Former Bank of Ireland & Earley's Buildings



Figure 5. 3D Visual of the new pedestrian link to the Smart Working Facility entrance and through to the public realm and associated works.



Figure 6. 3D Visual of the new pedestrian link to the Smart Working Facility entrance and through to the public realm and associated works



Figure 7. 3D Visual through the new pedestrian link through to the public realm and carpark



Figure 8. 3D Visual of the new extension of the Former Bank of Ireland & Early's Buildings from the new carpark



Figure 9. 3D Visual of the Regeneration Works – aerial view



Figure 10. 3D Visual of the entrance to the new Carpark & public realm works



Figure 11. 3D Visual of the entrance to the new Carpark & public realm works – aerial view



Figure 12. 3D Visual of the entrance to the new Carpark & public realm works – aerial view



Figure 13. 3D Visual of works to Building No.3 (Former Forge)



Figure 14. 3D Visual works of the 2 No. Stone outbuildings



Figure 15. 3D Visual works to Building No.4



Figure 16. 3D Visual of the steps outside Building No. 3



Figure 17. 3D Visual of new Pedestrian bridge with stepped access towards the 'People's Park' & The Food Hub

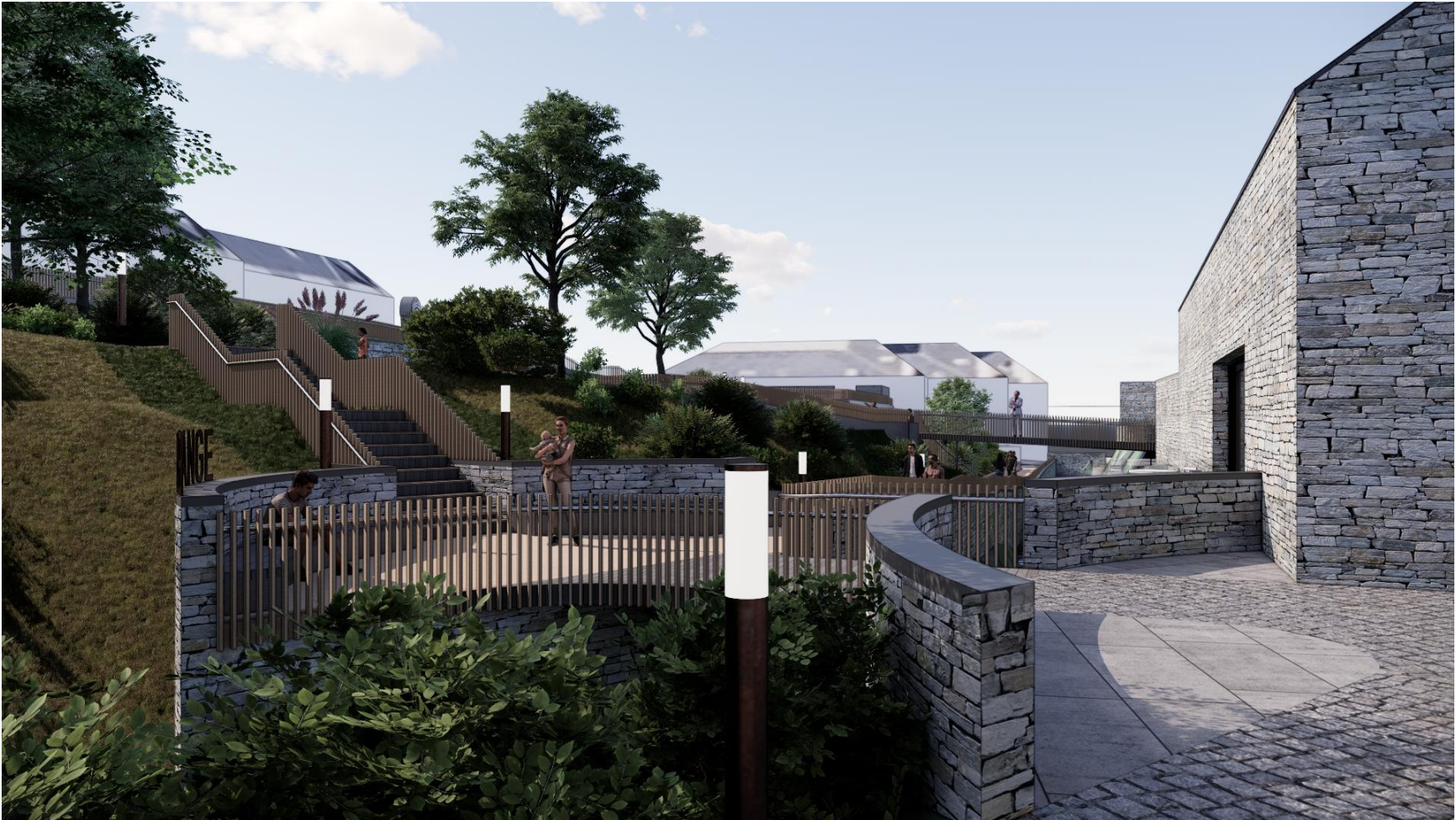


Figure 18. 3D Visual of new Pedestrian bridge with stepped access towards the ‘People’s Park’ & The Food Hub



Figure 19. 3D Visual of new Pedestrian bridge with new riverside walk towards Drumshanbo Methodist Church

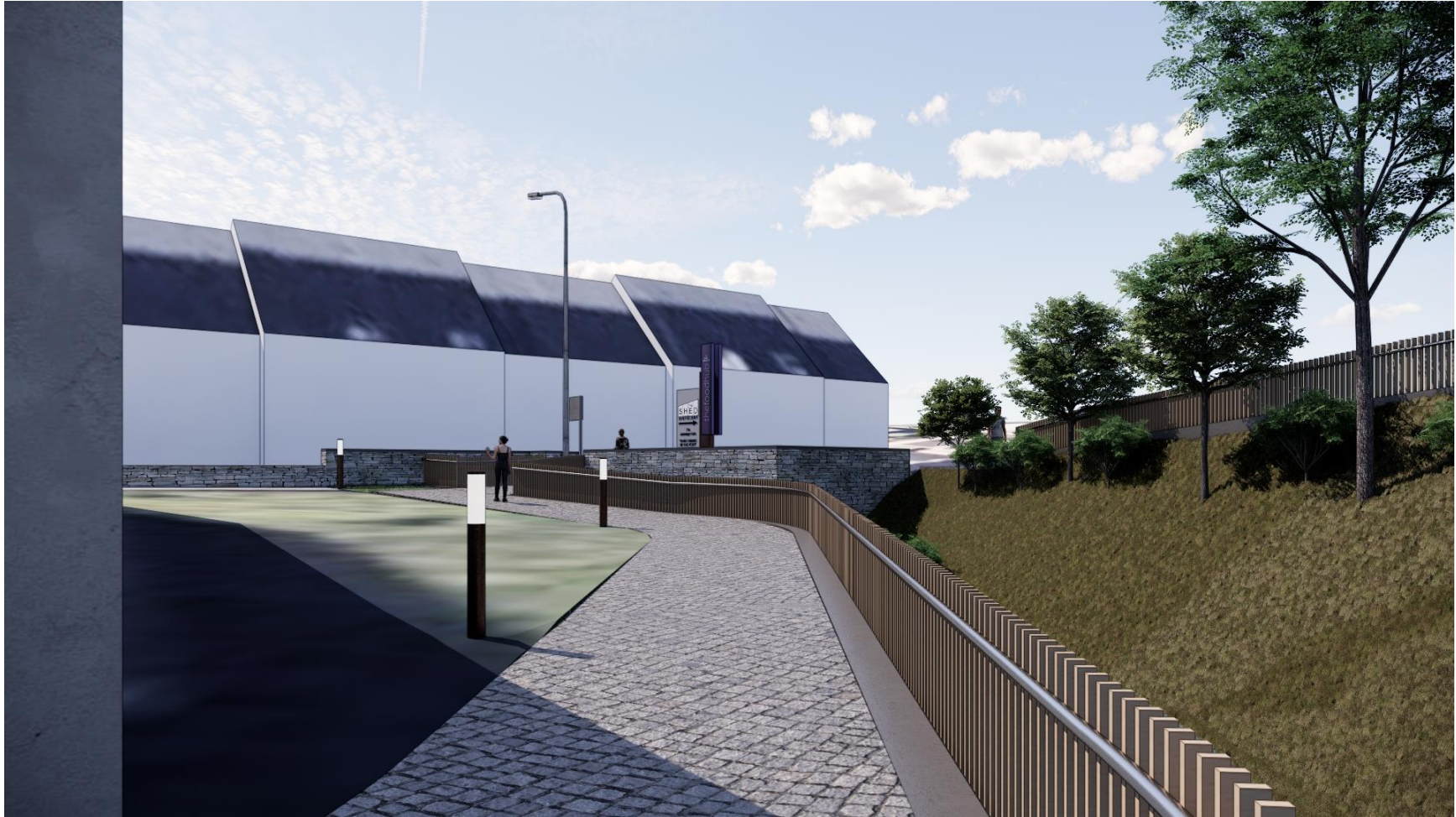


Figure 21. 3D Visual of new Pedestrian walkway within the curtilage of Drumshanbo Methodist Church



Figure 22. 3D Visual of the works at the Carrick Road Junction including creation of new pedestrian bridge

Figure 23. 3D Visual of the works at the Carrick Road Junction including creation of new pedestrian bridge



Figure 24. Existing Photo of the Carrick Road Junction





Figure 25. 3D Visual of works at People's Park



Figure 26. 3D Visual of the works towards the People's Park



Figure 27. 3D Visual of the works towards the People's Park from the existing footbridge – with the Danú Statue proposed in new location



Figure 28. 3D Visual indicating new stepped access towards 'People's Park' and works to existing riverside walk.