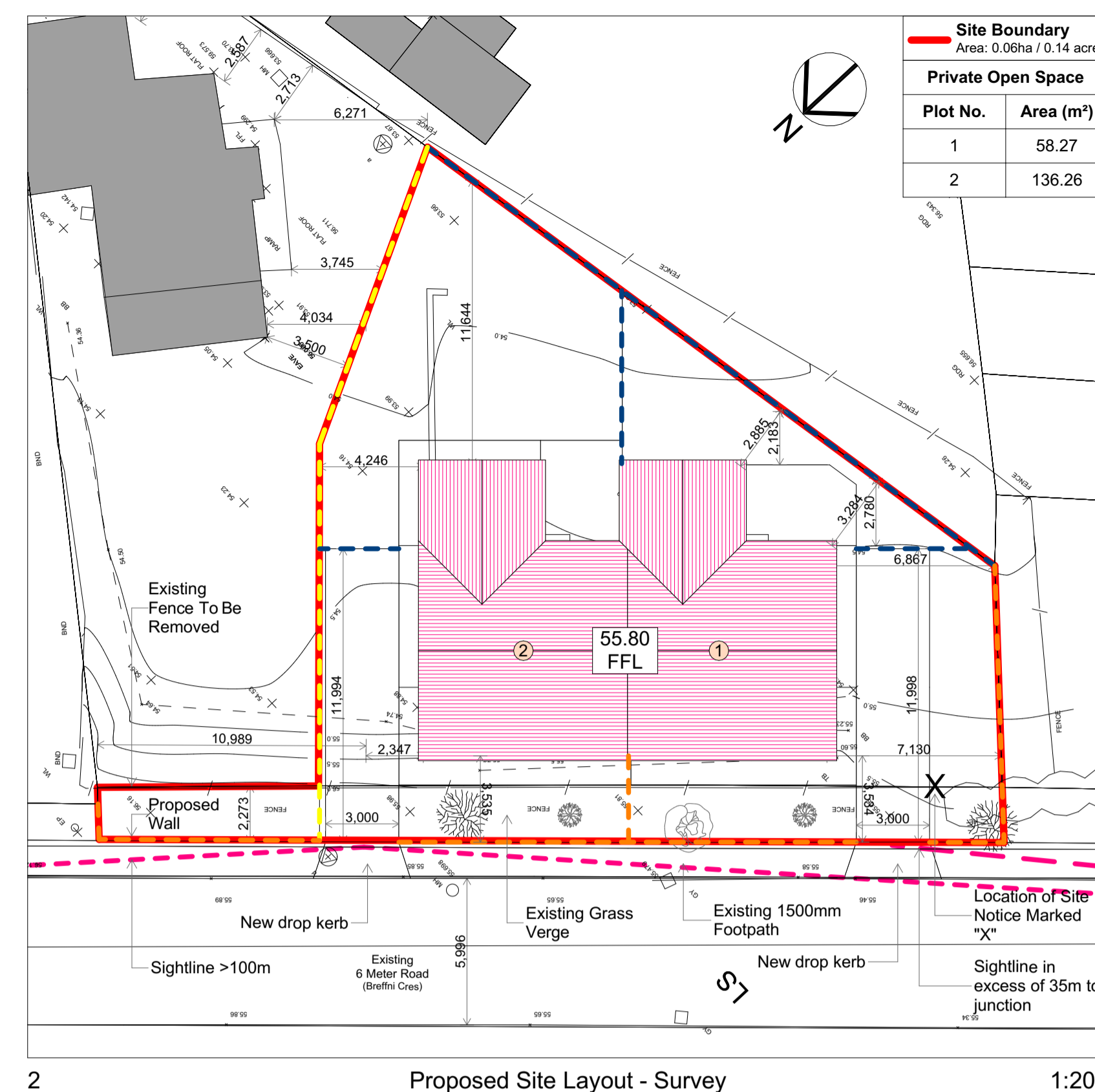


1 Proposed Site Layout 1:200



2 Proposed Site Layout - Survey 1:200



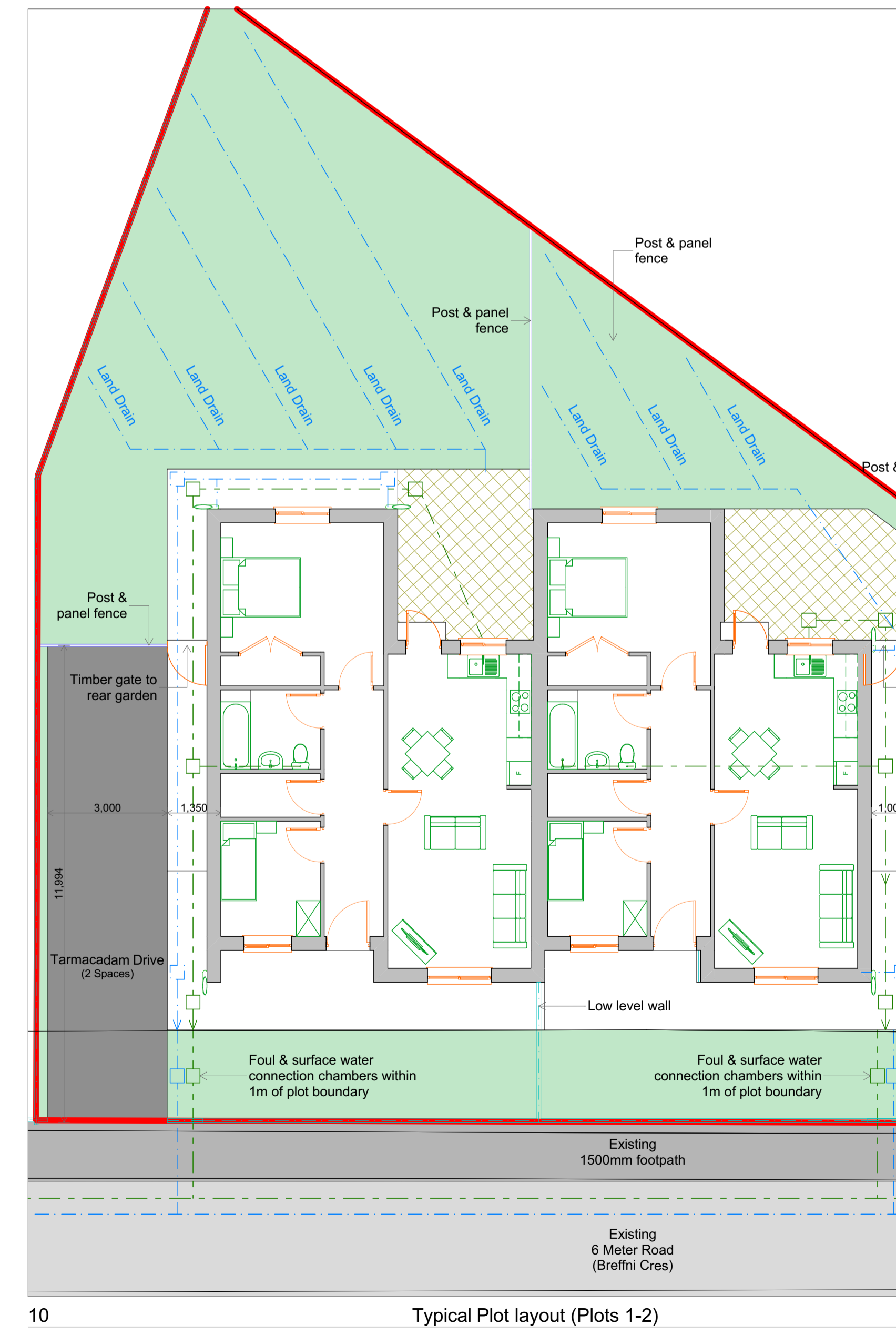
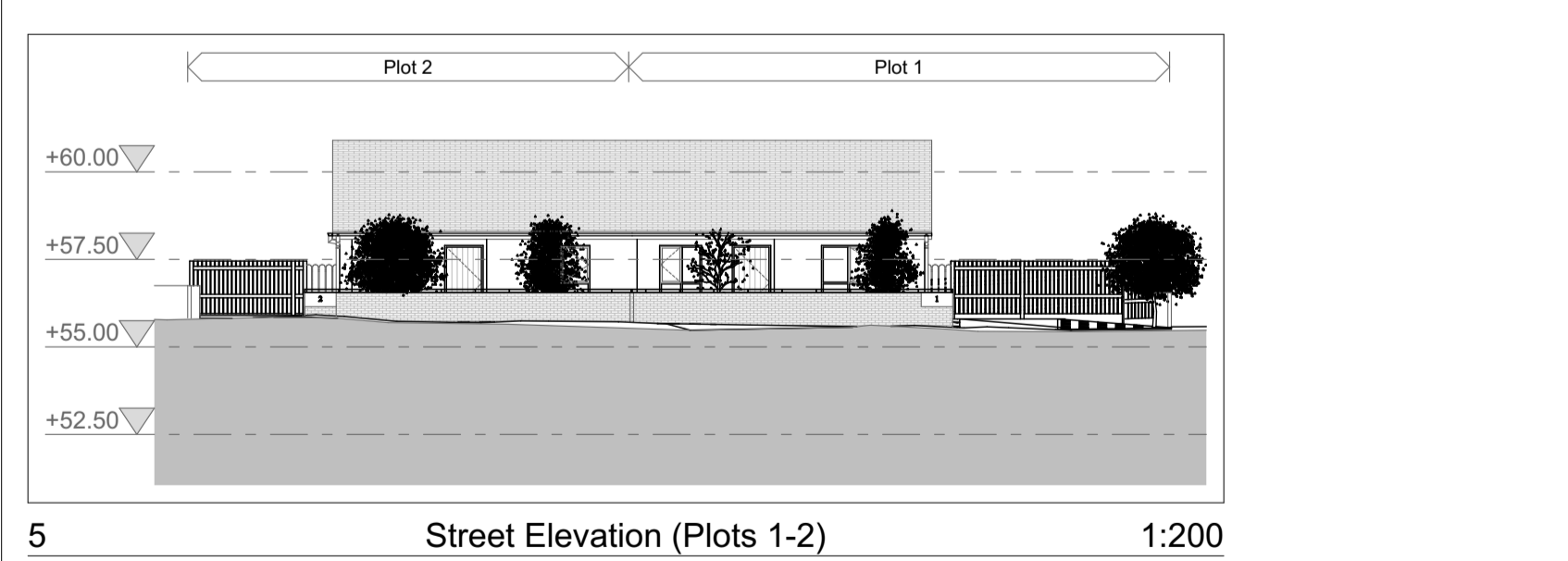
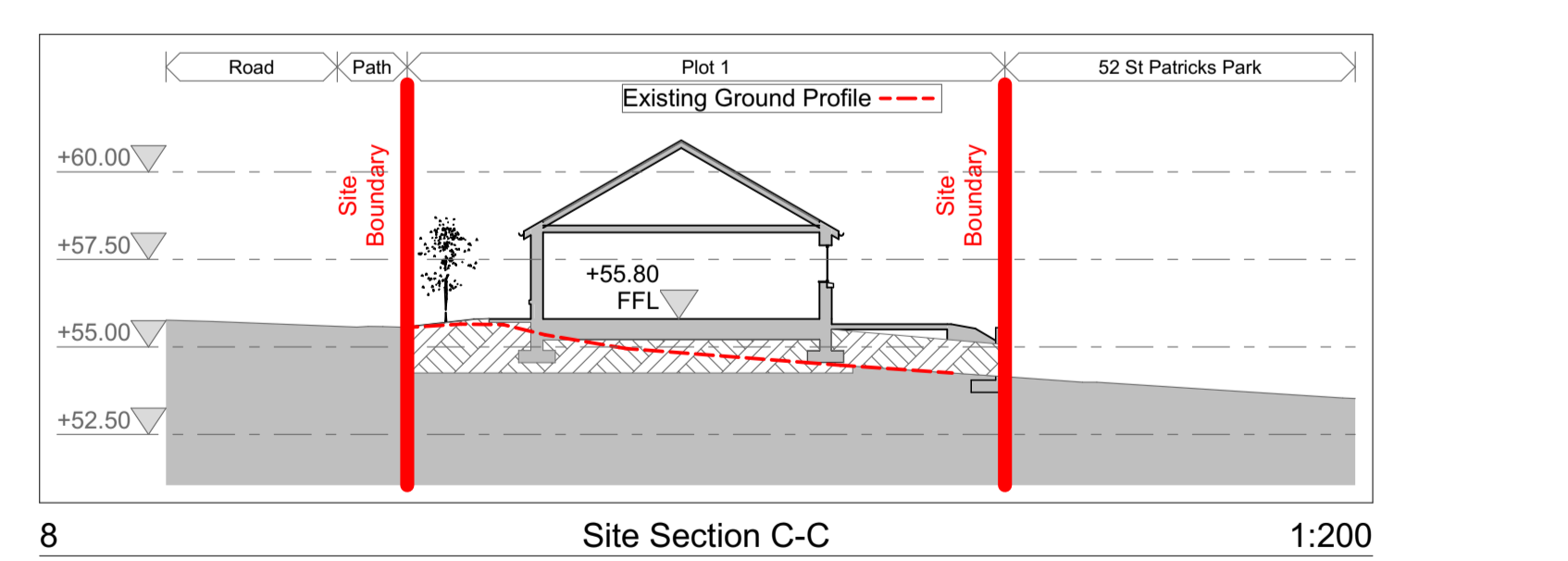
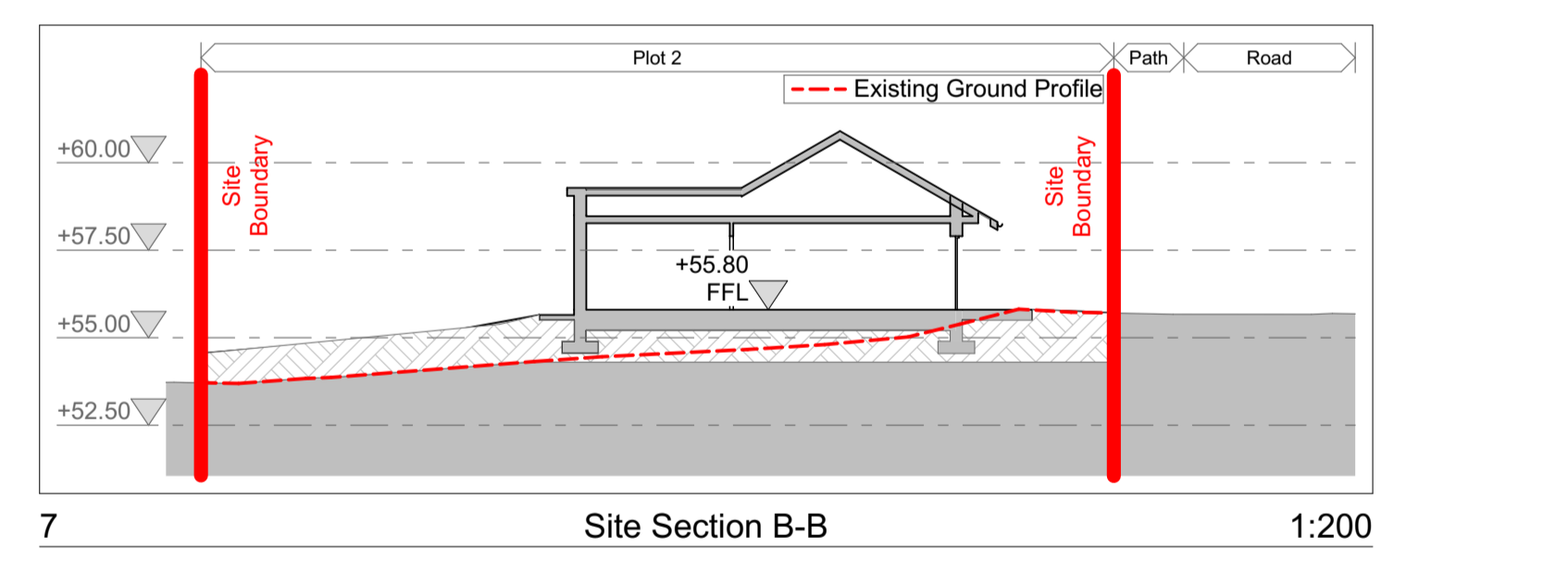
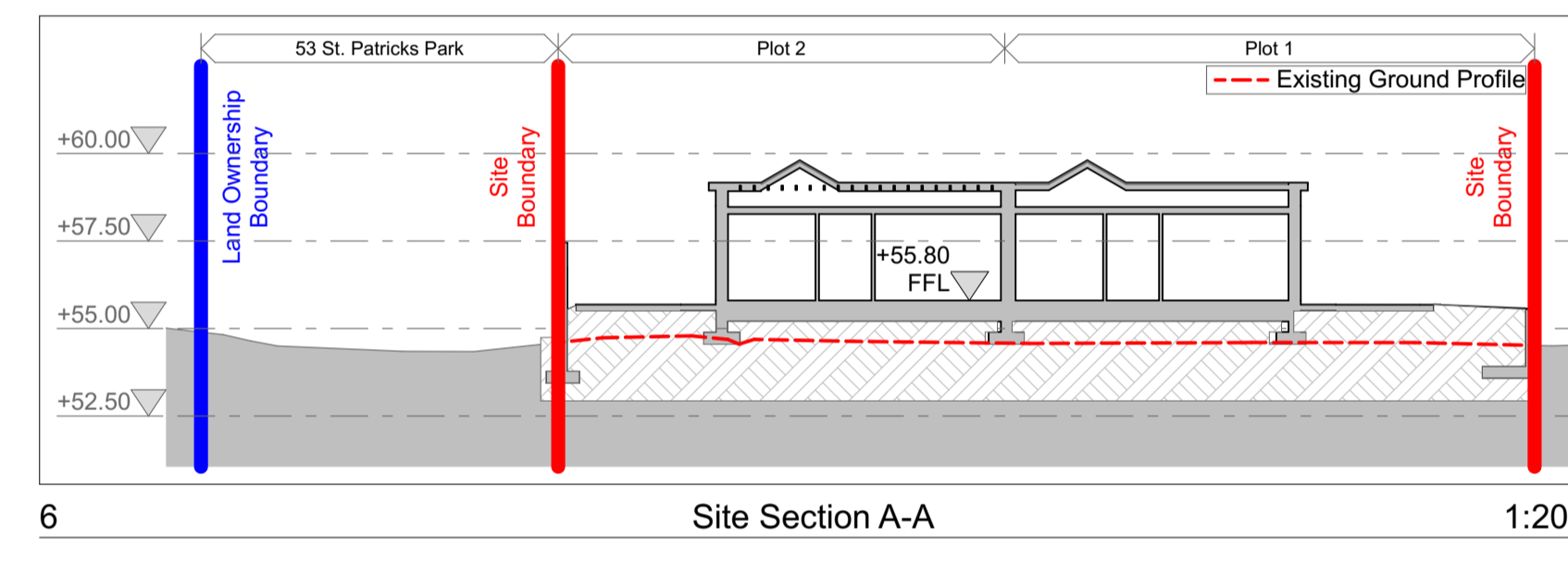
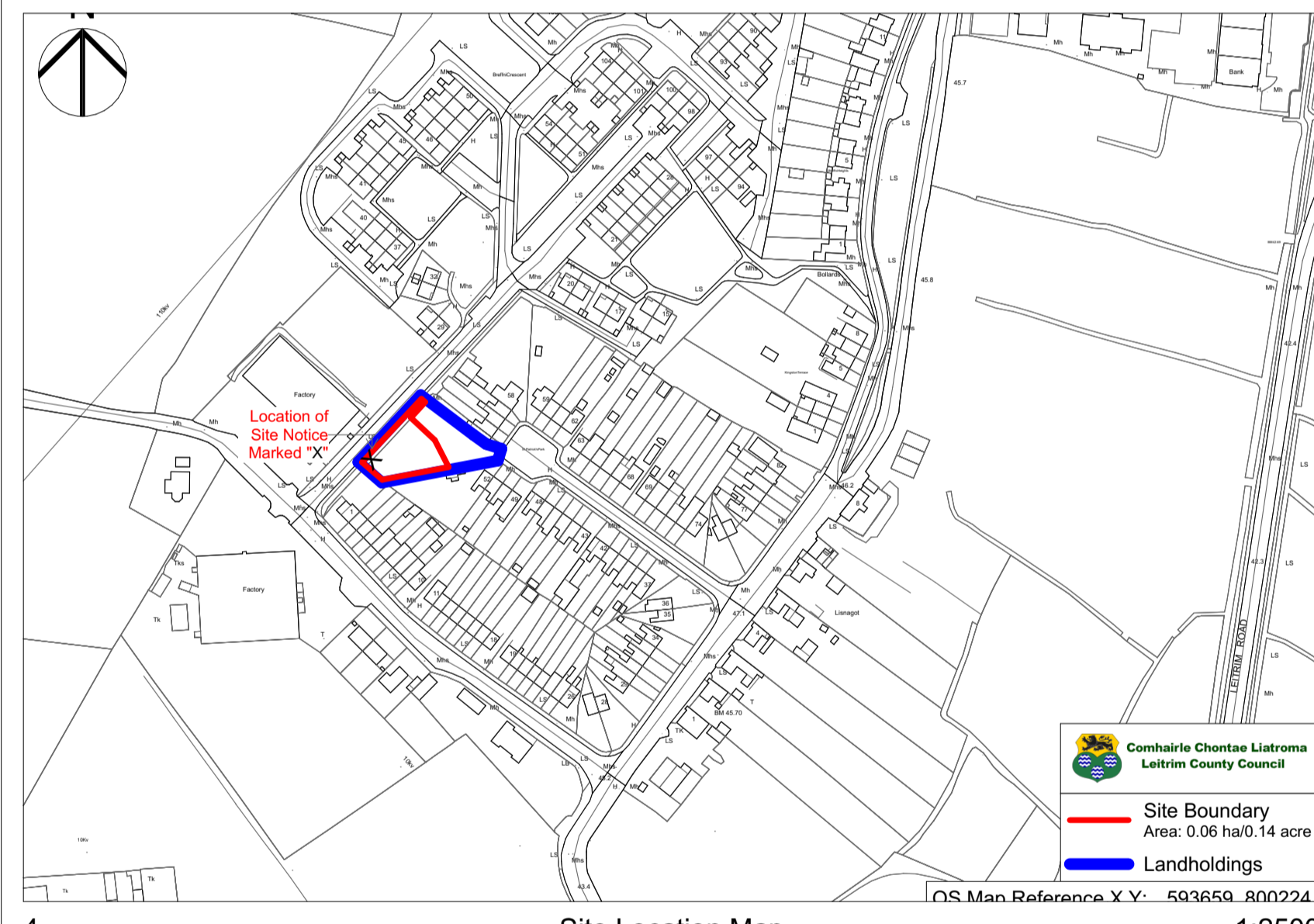
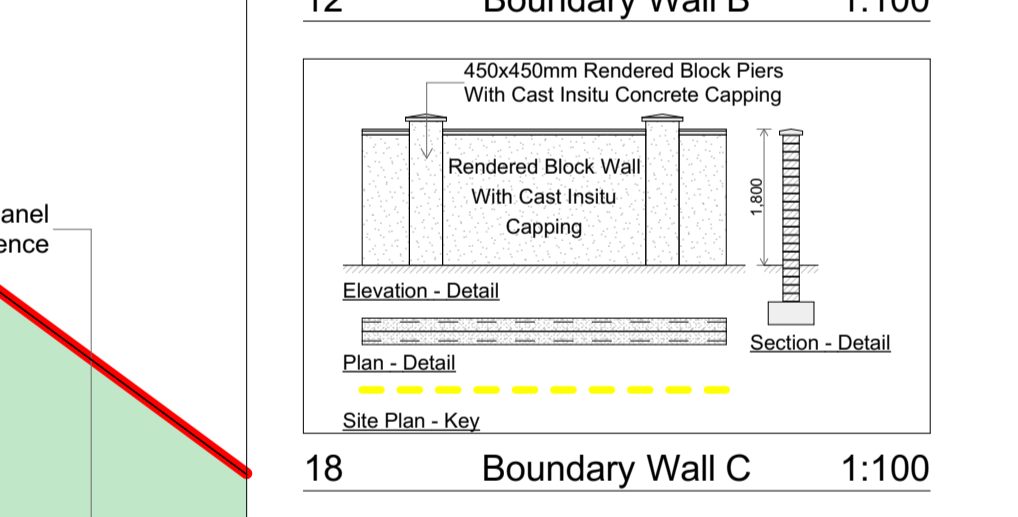
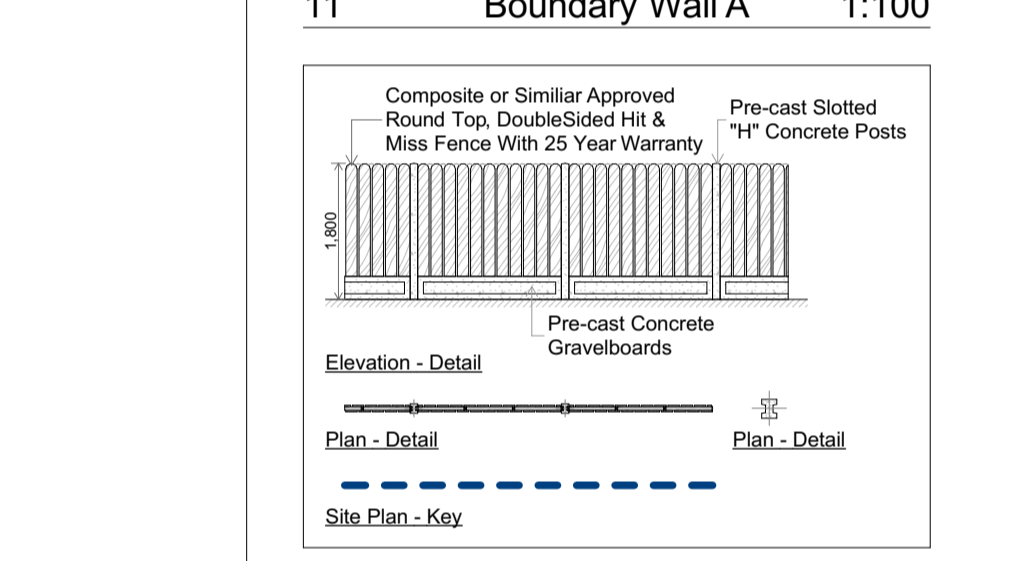
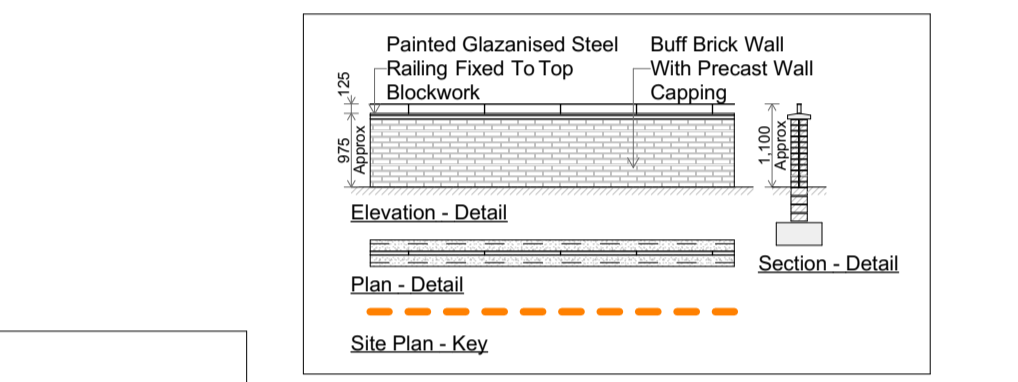
3 Existing Site Layout - Survey 1:200

Notes  
This document and its design content is copyright ©. It shall be read in conjunction with all other associated project information including models, specifications, schedules and related consultants documents. Do not scale from documents. All dimensions to be checked on site. Immediately report any discrepancies, errors or omissions on this document to the Originator. If in doubt ASK.

House Type 'A' - 2 No. Unit  
2 Bed Semi-Detached Bungalows

Total Units: 2

- Existing Access Road
- Driveways/ Parking Spaces
- Pedestrian Path Along Access Road
- Footpath
- Private Open Space (Lawn)
- Specimen Trees, Shrubs & Ground Cover Planting



Comhairle Chontae Leitrim  
Leitrim County Council

Rev	Issue Date	Description	Approved by
A	02/03/2021	Add signature	EG

Purpose of Issue: **Planning**

Wynne Gormley Architects & Surveyors Ltd.

© WGG ARCHITECTS & SURVEYORS LTD  
COPYRIGHT RESERVED

JOB DETAILS  
Construction of 2 no. fully serviced 2 bedroom semidetached bungalows accessed off Breffni Crescent, Carrick on Shannon, Co. Leitrim for Leitrim County Council

Scale of	Dwg. no	Amend.
A1	PL 20-033-001	A
1:200		
1:2500		
1:100		

Date: 24/02/2021  
Description: Planning - Site Layout, Site Location Map, Street Elevations, Site Sections, Images, Typical Plot Layout & Details  
Drawn by: John McDermott  
Checked by: Enda Gilsean

21, Church View, Cavan  
T +353 49 43 61096  
F +353 49 43 62907  
E info@wggarchitects.ie  
W www.wggarchitects.ie