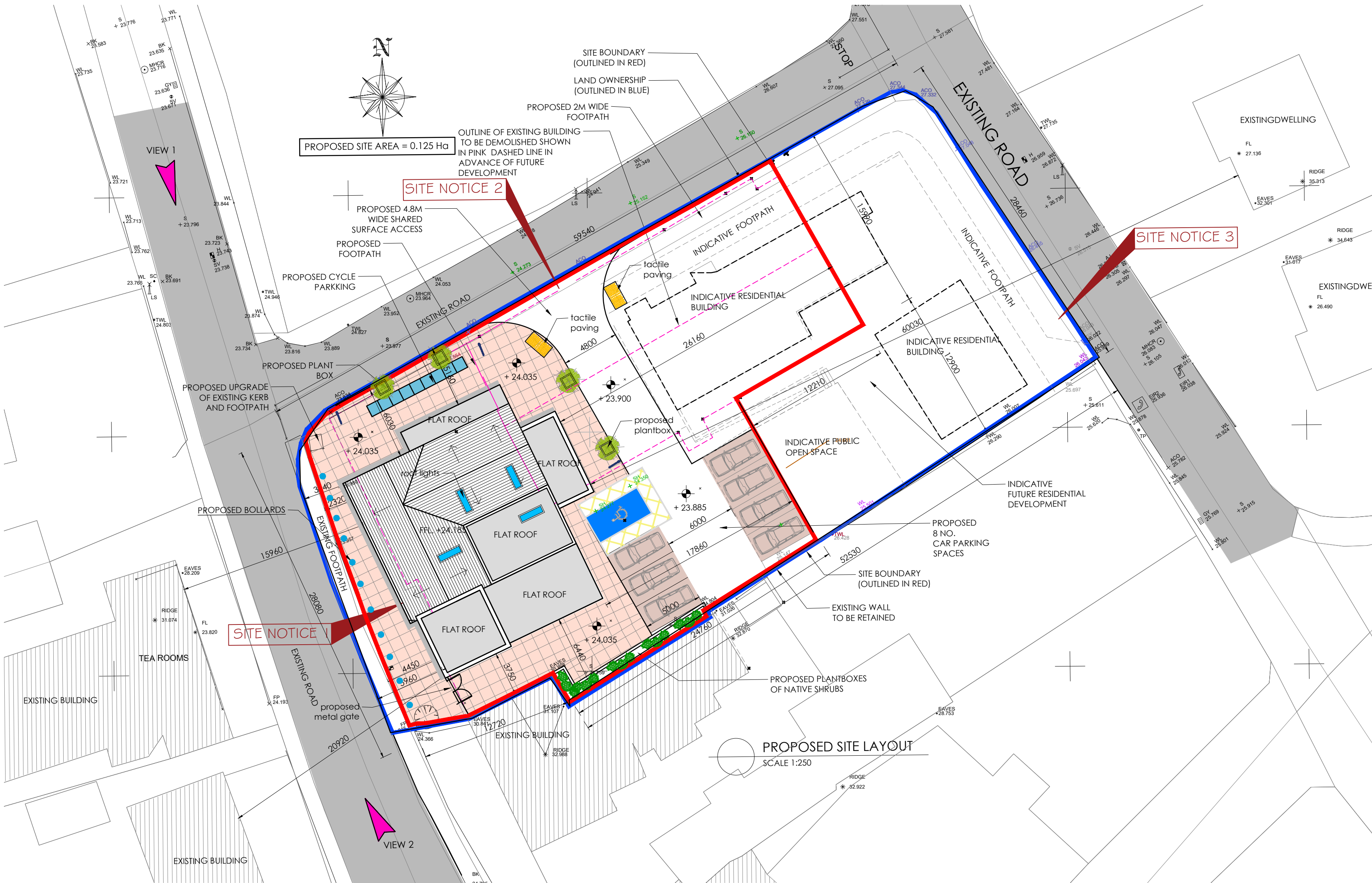


# PROPOSED OPEN LIBRARY BUILDING AT DRUMHAIRE, DROMAHAIR, CO. LEITRIM



### General Site Works:

#### General

Site services including foul and storm water sewers, mains water, telecoms electricity and streetlighting are to be provided as per service providers specifications and to civil Engineers design. New temporary wheel wash facility to be constructed on site to prevent site water from encroaching on public roadways. Wearing course of tarmacadam to be laid to entirety of site roads prior to completion of works. Individual water meters to be provided to all houses.

#### Timber

All exposed timber to be treated with appropriate external grade wood preservative. Fit new 1.8m high timber boarded access gate to all back gardens with 3 no. galvanised ms hinges and galvanised steel bolt.

#### Roads

Proposed Tarmacadam to be 40mm macadam wearing course on 150mm wet mix macadam road base on compacted grade 804 sub-base on geotextile membrane on suitably compacted sub-grade/fill/sub-soil

#### Footpaths

Footpaths to be generally 100mm deep but increased to 150mm depth where vehicle traffic anticipated on suitable depth of grade 804 compacted sub-base. Separation layer of 125micron polythene sheeting to be provided, without creases, between sub-base and concrete with all joints to overlap by 300mm. Footpath to be graded to road at 2.5% gradient and brush finished. Provide contraction joints in footpath at max 3M c/c. Joints to be straight and at right angles to footpath and to contain appropriate flexible joint or double layer roofing felt to full depth of joint.

#### Kerbing

250 x 125mm pre-cast concrete kerb set on 300mm x 100mm concrete base & haunched to rear with concrete. Kerbs to show between 100mm and 150mm above road, except at vehicular accesses, where they shall be reduced to 25mm over the channel end of wheelchair and pram accesses where an upstand of 10mm shall be provided. The footway slope at ditched kerbs not to exceed 7%

#### Public Lighting

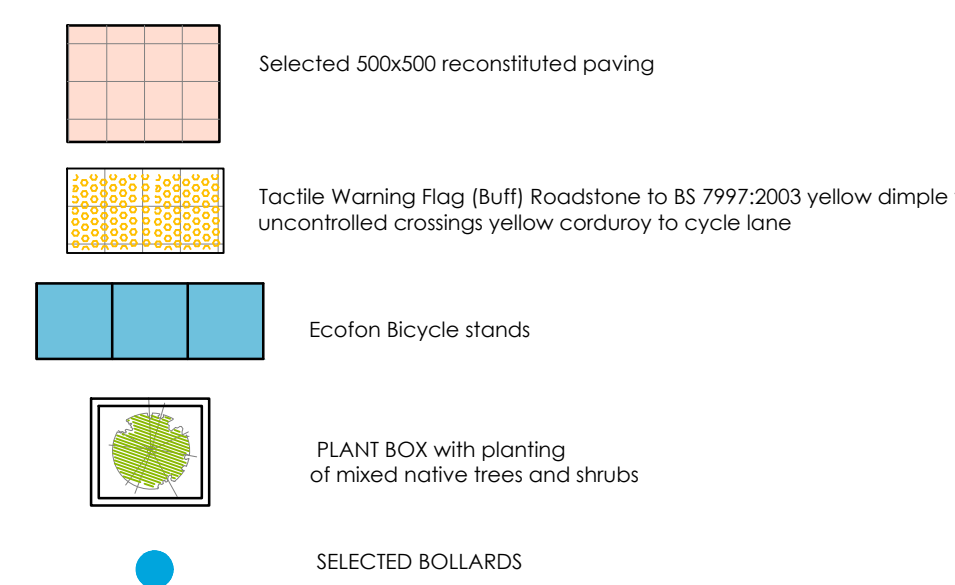
Provide public lighting as per section 5 "recommendations for site development works for housing areas" as published by DOE. Lighting columns are to be manufactured of galvanised mild steel to BS 5649 and be octagonal profile columns 6m long, gradually tapering to a diameter of 68mm. Luminaires to be provided as per lighting schedule. Up to 6 lamps can be supplied per micro pillar. Cabling to the lamps is to be laid in 100mm dia PVC-U ducting with a min cover of 600mm in grassed areas and 750mm at road crossings. Cables are not to be jointed. Cables are to be looped from column to column on each circuit.

#### Public Lighting

Selected street lighting as per:

- Luma Micro BG615 NW DW50 20 LED 5.0km OR SIMILAR APPROVED
- 1 lamp(s) per luminaire, 5000 initial lumens per lamp
- Maintenance Factor = 0.760, watts per luminaire = 30
- Outreach (from mounting axis to photometric center) = 400 mm
- tilt angle = 5 deg
- mounting height = 6 m
- number locations = 3, number luminaires = 3
- kw all locations = 0.1

### HARD SURFACING LEGEND



### SIGNAGE & ROADMARKING LEGEND



### VEGETATION & PLANTING LEGEND

- SELECT EXTRA HEAVY STANDARD TREES min. 12-14cm girth, proposed species:
- SELECT HEAVY STANDARD TREES min. 10-12cm girth, proposed species:
- NEW PLANTING OF INDIGENOUS HEDGEROWS
- SELECT SHRUB AND GROUNDCOVER PLANTING To be all containerised stock min. 2L. Typical species:
- GROUNDCOVERS planted at 5-7/m<sup>2</sup>:  
Crocus later  
Festuca spp.  
Hedera 'Hibernica'  
Rus spp.  
Viola minor  
Luzula placca
- SHRUBS, planted at 3-4/m<sup>2</sup>:  
Corylus avellana  
Corylus maxima 'Purpurea'  
Hypericum calycinum  
Lavandula stoechas  
Magnolia x soulangeana  
Malva x media 'Charity'  
Philadelphus 'Belle Etoile'  
Rosa 'meiland' 'Alba'  
Viburnum davidii  
Viburnum opulus

#### SUITABLE NATIVE TREES FOR OPEN SPACES:

- a.) Ash
- b.) Blackthorn
- c.) Crab Apple
- d.) Hazel
- e.) Oak
- f.) Wild Cherry
- g.) Birch
- h.) Scots pine

#### SUITABLE NATIVE TREES FOR STREET:

- a.) Birch
- b.) Rowan
- c.) Hawthorn
- d.) Holly
- e.) Bird Cherry

#### SUITABLE NATIVE TREES FOR HEDGES

- a.) Bird Cherry
- b.) Spindle

Good native hedgerow species for pollinators: (reference : Biodiversity Ireland)

- Hazel (Feb-Apr)
- Willow (Mar-May)
- Blackthorn (Mar-May)
- Hawthorn (Apr-Jun)
- Broom (Apr-Jun)
- Wild Cherry (Apr-May)
- Bramble (May-Sept)
- Wild Privet (May-Jul)
- Crab apple (May-Jun)
- Elder (May-Jun)
- Whitebeam (May-Jun)
- Rowan (May-Jun)
- Wild Rose (Jun-Jul)
- Honeysuckle (Jun-Oct)
- Guiselder Rose (Jun-Jul)
- Raspberry (Jun-Aug)
- Ivy (Sept-Nov)
- Goose (Jan-Dec)

Seeded Grass Areas  
All soft areas to be topped, leveled and seeded prior to completion of contract.

Tarmacadam  
Drives, parking and service areas to be finished in tarmacadam suitable for pedestrian and vehicle traffic on suitably compacted hardcore base. Allow for pre-cast concrete kerbing to all edges not finishing against vertical elements. Build up to be confirmed by engineer but to generally be geotextile mesh on subsoil followed by 225mm compacted grade 804 hardcore with 60mm tarmacadam wearing surface.



VISUALIZATION VIEW 1



VISUALIZATION VIEW 2

**NOTES:**  
This drawing is copyright and may not be copied or altered without permission.  
Use only figured dimensions. Do not scale this drawing.  
The contractor is responsible for checking all dimensions on site prior to construction.  
The Architects are to be notified of any discrepancies prior to work commencing.  
Levels and contours, shown on drawings, are relative to local datum unless specified

REVISION:	DATE:	DESCRIPTION:	INITIAL:	REVISION:	DATE:	DESCRIPTION:	INITIAL:

LEITRIM COUNTY COUNCIL			
Proposed Open Library Building			
Drumhaire, Dromahair, Co. Leitrim			
<b>PROPOSED LANDSCAPING LAYOUT</b>			
NO: 20455	SCALE: VARIES	DATE: 1-Oct-20	PROJECT NO: 20455-PLA -101