



Comhairle Chontae Liatroma
Leitrim County Council



Comhairle Contae
Ros Comáin
Roscommon
County Council

Appendix 5: Local Transport Plan

Proposed Material Alterations to the Draft Plan



www.carrickjointplan.ie

Contents

1. Introduction:	2
2. Proposed Amendments.....	3

1. Introduction:

1.1 Proposed Material Alterations to Appendix 5: Local Transport Plan of the Draft Carrick-on-Shannon Joint Local Area Plan

The proposed material alterations detailed in this document pertain only to the Appendix 5: Local Transport Plan of the Draft Carrick-on-Shannon Joint Local Area Plan (Draft JLAP). Please refer to the accompanying *Introduction* document for details of this stage of the plan preparation process and information on how and when to make submissions / observations on the proposed material alterations.

The proposed material alterations should be read in conjunction with the proposed changes set out in the Written Statement, Appendices and the Associated Documents.

1.2 Document Format

All proposed material alterations are included in the order of Sections of the Local Transport Plan, with each proposed change being assigned a unique reference number. The original location in the Local Transport Plan is referenced where applicable (references to page numbers are to the Draft Plan page number).

Proposed changes to the text of the Draft JLAP are displayed in the following format:

- Proposed omissions to the text of the Draft JLAP are demoted using ~~strikethrough~~.
- Any proposed amended or additional text to the Draft JLAP is identified in **green**.

2. Proposed Amendments

Proposed Amendment MA 39		
Section	Title	Page
3.3	<i>Key Project Objectives</i>	8

Include the following Key Objectives in Section 3.3 (Key Project Objectives) in the Local Transport Plan:

- Improve existing public transport services frequency.
- Maintain the strategic function, capacity and safety of the national road network.

Proposed Amendment MA 40		
Section	Title	Page
6.1	<i>Recommended Permeability Schemes</i>	12

Revise Table 6.1 of the Local Transport Plan as follows:

Priority 1 Schemes	
No.	Scheme
PY-6	Provide a pedestrian/ cycle link from the Intreo centre on the N4 to the bridge
PY-8	Improve pedestrian connection link between Quay Road and St Georges Terrace through Peoples Park
PY-9	New pedestrian connection via archway connecting Bridge Street and Cryans Hotel Access Road to be well-lit and detailed to compliment the townscape.
PY-10	New pedestrian link between Flynn's Field car park and Shannon Court.
PY-16	Connection New pedestrian and cycle link from Lis Cara to Autumn View
PY-17	New pedestrian link connecting Summerhill (near St. Patricks Community Hospital with Leitrim Road (south of Hartley's Cross junction)
PY-18	Connection New pedestrian and cycle link from Mount Temple Mews to Summerhill
PY-19	Improve pedestrian/ cycle link between Bridge Street and Cortober
PY-20	New pedestrian/cycle link north of Páirc Seán Mac Diarmada to connect schools, residential estates with employment, leisure, and retail areas around the N4, at Castlecara Road to Cara Court
PY-21	New pedestrian/cycle link connecting Ath Na Rí to Gaelscoil Liatroma and Castlecara Rd. This connection will benefit from the existing cycle path along Castlecara Rd. The route has the potential to blend well with existing landscape patterns, drumlins, and other features at Correen to Gaelscoil Liatroma
PY-22	New pedestrian/ cycle link between Shannonside View and Rosebank Retail Park
PY-26	Connection New pedestrian/cycle link from Leitrim Road, north of Liscara, to Summer Hill
PY-27	Connection New pedestrian/cycle link from Summer Hill to Castlecara Road

Proposed Amendment MA 41		
Section	Title	Page
6.1	<i>Recommended Permeability Schemes</i>	12

Revise Table 6.2 of the Local Transport Plan as follows:

Priority 2 Schemes	
No.	Scheme
PY-12	Ensure proposed Blueway is connected with future east-west links at Priests Lane (Fire Station to Patricks Park)
PY-14	New connection pedestrian and cycle link from Cloonsheebane to Ballynamony
PY-15	New connection pedestrian and cycle link between Lis Cara estate and Oaklands estate
PY-23	New pedestrian link along the riverside to connect to the Riverfront Park to Attyrory
PY-24	Connection New pedestrian and cycle link from Dún Rí to Ros na Hinse bus stop

Proposed Amendment MA 42		
Section	Title	Page
6.2.2	<i>Bicycle Infrastructure</i>	16

Revise Table 6.5 and amend Fig 6.3 accordingly of the Local Transport Plan as follows:

Priority 1 Schemes	
No.	Scheme
C-5	New cycle path from Carrick Retail Park to the R368 roundabout (Urban Primary route in CycleConnects)
C-6	New cycle path along Sligo Road connecting to a new segregated cycle path on the pedestrian bridge (Urban Primary route in CycleConnects)
C-7	New cycle path from the Dock, along St. Georges Terrace, to Quay Road (Urban Secondary route in CycleConnects)
C-9	New cycle route along Main Street (Urban Primary route in CycleConnects)
C-10	New cycle path along Flynn's field, with bicycle connection through the laneway from Bridge Street (Urban Secondary route in CycleConnects)
C-11	New cycle path connecting Shannon Court to Flynn's Field (Urban Secondary route in CycleConnects)
C-12	New cycle route along Shannon Court with a connection adjacent to Central Park (Urban Secondary route in CycleConnects)
C-13	New cycle route along N4 (Bridge Street to the Shannon roundabout) (Urban Primary route in CycleConnects)
C-14	New cycle paths along all roads in Shannon Lodge (Urban Secondary route in CycleConnects)
C-15	New cycle path between N4 roundabout to Summerhill. (Urban Primary route in CycleConnects)
C-16	Improve bicycle path along L3412 Summerhill from the Summerhill roundabout, implementing bollards etc. Also Improve cycle path within the park adjacent to L3412 Summerhill (Greenway route in CycleConnects)
C-17	New bicycle path along Summerhill from main street towards Carrick-on-Shannon Community School (Urban Primary route in CycleConnects)
C-18	New cycle path along Priests Lane, to accommodate for potential Blueway (Urban Secondary route in CycleConnects)
C-19	New cycle path along St Patricks Park to accommodate for potential Blueway (Urban Secondary route in CycleConnects)
C-20	Improve existing cycle path from north of St Patricks Park towards Cloonsheebane (Urban Secondary route in CycleConnects)
C-24	Improve existing L3412 Summerhill cycle route (forms part of existing proposed scheme)
C-25	Improve existing cycle route from Summerhill roundabout toward Castlecara Rd (Urban Secondary route in CycleConnects), includes making off road/ adding safety bollards
C-26	New cycle route connecting Ath na Ri to Gaeilscoil Liatroma

Priority 1 Schemes

C-27	Improve existing cycle route from Summerhill roundabout to Attifinlay Roundabout (Urban Primary route in CycleConnects), includes making off road paths to segregate from traffic/ adding safety bollards to on-road paths
C-28	Improve existing cycle route from Attifinlay Roundabout to where the speed limit changes on the N4 (Urban Primary route in CycleConnects), includes making off road paths to segregate from traffic/ adding safety bollards to on-road paths
C-30	Improve existing cycle route from Attyrory Roundabout to St Marys GAA (Urban Secondary route in CycleConnects), includes making off road paths to segregate from traffic/ adding safety bollards to on-road paths
C-31	New cycle path along Castlecara Rd to tie to the existing path/ cycle path to the north

Proposed Amendment MA 43		
Section	Title	Page
6.2.2	<i>Bicycle Infrastructure</i>	16

Revise Table 6.6 and amend Fig 6.3 accordingly of the Local Transport Plan as follows:

Priority 2 Schemes	
No.	Scheme
C-1	New cycle path along the R368, from south of the View towards the N4/ R368 roundabout. (Inter-Urban/ Urban Primary route in CycleConnects)
C-2	New cycle route from the train Station along R370 towards Shannon Gael estate (Urban Secondary route in CycleConnects)
C-3	New cycle path connecting R368 Mullaghmore to train station at R370
C-4	Proposed Carrick-on-Shannon to Boyle Greenway
C-8	New cycle path along Bridge Street (Urban Primary route in CycleConnects)
C-20	Improve existing cycle path from north of St Patricks Park towards Cloonsheebane (Urban Secondary route in CycleConnects)
C-22	New cycle path from Main Street along R280 heading north (Inter-Urban/ Urban Primary route in CycleConnects)
C-21	New cycle path from Ballynamony road along Cloonsheebane road toward Hartley Court (Urban Secondary route in CycleConnects)
C-23	New cycle route from the Hartley Cross junction on the R280 connecting to St Patricks Community Hospital. (Urban Secondary route in CycleConnects)
C-24	New cycle route from Cartown towards Castlecara Rd. (Urban Secondary route in CycleConnects)
C-29	New cycle route connecting The Shannon roundabout to Shannonside View to improve connectivity to Rosebank Retail Park.
C-32	New cycle path along the L365 road
C-33	New cycle path from where the speed limit changes along the N4
C-34	Development of Blueway from Carrick-on-Shannon to Leitrim Village and Battlebridge Lock

Proposed Amendment MA 44		
Section	Title	Page
6.3	<i>Recommended Public Transport Schemes</i>	20

Revise Table 6.9 and amend Fig 6.5 accordingly of the Local Transport Plan as follows:

Priority 1 Schemes	
No.	Scheme
PT-2	Train Station parking area to accommodate adequate and legible turnaround for bus services (e.g., Local Link).
PT-3	Wayfinding improvements to train station
PT-4	Improve bus stop at train station, improve lighting, pathway, add shelter and signage
PT-5	New bus stop north of Glenpatrick along R368
PT-8	Improve bus stop at Glancy's Bar, improve lighting, pathway, add shelter and signage
PT-9	New bus stop along Bridge St.
PT-10	Eastbound bus stop upgraded at N4 Bus Stop (near Cryans hotel) - Electronic signage?
PT-11	Westbound bus stop upgraded as part of 'Destination Towns' initiative at N4 Bus Stop (near landmark hotel) - Electronic signage?
PT-12	Designate section of on-street parking along N4 (east of Shannon Court junction) as 'coach' parking during busy summer months at N4 (between Shannon Court and Shannon roundabout)
PT-13	Improve Summerhill bus stop, improve lighting, pathway, add shelter and signage
PT-14	Improve Leitrim Village bus stop, improve lighting, pathway, add shelter and signage
PT-15	Improve Park Lane bus stop, improve lighting, pathway, add shelter and signage
PT-16	Improve Park Lane bus stop, improve lighting, pathway, add shelter and signage
PT-17	Improve Breffni Estate, Hartley Hall, bus stop, improve lighting, pathway, add shelter and signage
PT-18	Improve St Patricks Park, Hartley Hall, bus stop, improve lighting, pathway, add shelter and signage
PT-19	Improve Hartley, Hartley Hall, bus stop, improve lighting, pathway, add shelter and signage
PT-22	Improve Lis Cara bus stop, improve lighting, pathway, add shelter and signage
PT-31	Improve Ros na hInse bus stop, improve lighting, pathway, add shelter and signage
PT-32	Improve Rockingham bus stop, improve lighting, pathway, add shelter and signage
PT-33	Improve Ard na Sí bus stop, improve lighting, pathway, add shelter and signage

Proposed Amendment MA 45		
Section	Title	Page
6.3	<i>Recommended Public Transport Schemes</i>	20

Revise Table 6.10 and amend Fig 6.5 accordingly of the Local Transport Plan as follows:

Priority 2 Schemes	
No.	Scheme
PT-1	New bus stop at the entrance to The Well housing estate to accommodate proposed bus route
PT-6	New bus stop west of West Gate Business Park along N4
PT-7	New bus stop near Carrick Business and Retail Park along N4
PT-8	Improve bus stop at Glancy's Bar, improve lighting, pathway, add shelter and signage
PT-13	Improve Summerhill bus stop, improve lighting, pathway, add shelter and signage. Dependent on future bus services utilising the bus stop.
PT-17	Improve Breffni Estate, Hartley Hall, bus stop, improve lighting, pathway, add shelter and signage. Dependent on future bus services utilising the bus stop.
PT-18	Improve St Patricks Park, Hartley Hall, bus stop, improve lighting, pathway, add shelter and signage. Dependent on future bus services utilising the bus stop.
PT-19	Improve Hartley, Hartley Hall, bus stop, improve lighting, pathway, add shelter and signage. Dependent on future bus services utilising the bus stop.
PT-20	New bus stop at St Marys Cemetery to accommodate potential bus route
PT-21	New bus stop at Clenahoo House along existing bus route
PT-23	New bus stop at Summerhill Roundabout to accommodate potential bus route
PT-24	New bus stop outside Oaklands estate to accommodate potential bus route
PT-25	New bus stop along Kilboderry Rd, near the Beeches in Drumnagh to accommodate potential bus route
PT-26	New bus stop outside Ath Na Rí estate to accommodate potential bus route
PT-27	New bus stop at Rosebank Retail Park to accommodate potential bus route and existing bus route
PT-28	New bus stop along Castlecara Rd south of St. Mary's GAA to accommodate potential bus route
PT-29	New bus stop at North West Business Park to accommodate potential bus route
PT-30	New bus stop at Shannonside Retail Park to accommodate potential bus route
PT-34	New bus route extending from the south, stopping at the train station, towards main street
PT-35	Improve frequency of train services at Carrick-on-Shannon station.
PT-36	New bus route extending from Hartley Court towards main street

Priority 2 Schemes	
PT-37	New bus route extending from the L3408, towards main street
PT-38	New bus route extending from the L3408, passing Attitroy, towards main street

Proposed Amendment MA 46		
Section	Title	Page
6.4	<i>Recommended Car Parking Schemes</i>	22

Revise Table 6.11 and amend Fig 6.6 accordingly of the Local Transport Plan as follows:

Priority 1 Schemes	
No.	Scheme
CP-3	Reorganisation of parking within the Quay Road car park and the re-purposing of parking areas for public realm. Route to be made legible and connect with the proposed Blueway, Townspark, the proposed new boardwalk and the ramp to River Shannon Bridge.
CP-4	Public realm scheme which reduces the amount of on-street car parking along Bridge Street, replacing it with new build-outs for seating, trees, and outdoor dining. Potential to create 'chicane' type traffic calming features. High quality paving and materials to compliment townscape and public realm upgrades.
CP-5	Re-examine car parking at Cryans Hotel Access Road
CP-6	Re-examine car parking at Landmark Hotel Access Road
CP-7	Reduce on-street parking (with new buildouts accommodating street trees and SUDs tree-pits where possible) at N4 (Bridge Street to Shannon roundabout)
CP-11	Identification of appropriate 'park and stride' locations, peripheral to the core town centre area.

Proposed Amendment MA 47		
Section	Title	Page
6.4	<i>Recommended Car Parking Schemes</i>	22

Revise Table 6.12 and amend Fig 6.6 accordingly of the Local Transport Plan as follows:

Priority 1 Schemes	
No.	Scheme
CP-1	Identify new off-street car parking in proximity of the train station
CP-3	Reorganisation of parking within the Quay Road car park and the re-purposing of parking areas for public realm. Route to be made legible and connect with the proposed Blueway, Townspark, the proposed new boardwalk and the ramp to River Shannon Bridge.
CP-4	Public realm scheme which reduces the amount of on-street car parking along Bridge Street, replacing it with new build-outs for seating, trees, and outdoor dining. Potential to create 'chicane' type traffic calming features. High quality paving and materials to compliment townscape and public realm upgrades.
CP-8	Re-examination of car parking at Shannon Court
CP-9	Reduce on-street parking (with new buildouts accommodating street trees and SUDs tree-pits where possible) at Main Street
CP-10	Explore opportunities for long-stay car park, with active travel connections into town centre.

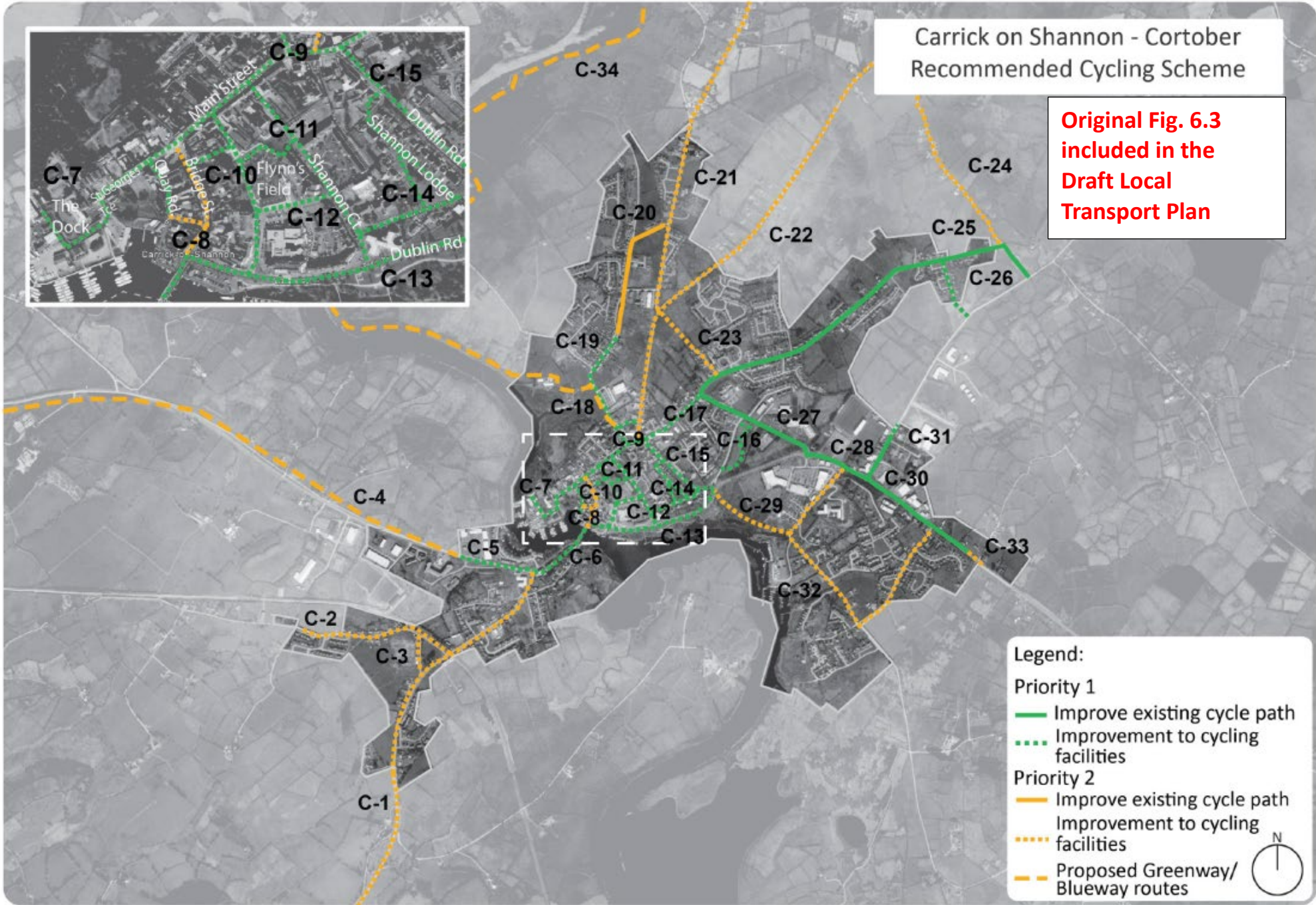
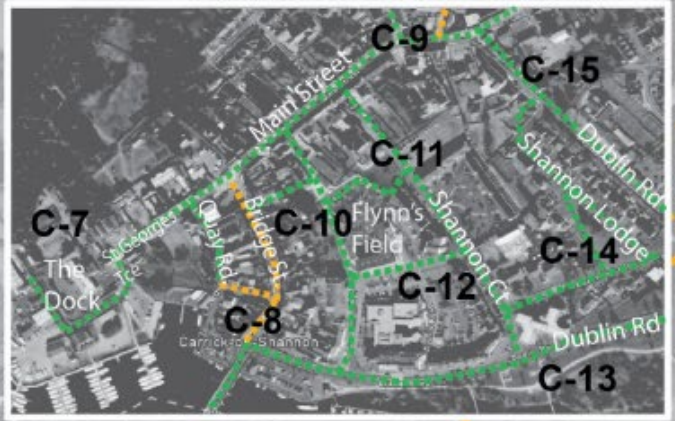
Proposed Amendment MA 48		
Section	Title	Page
7	<i>Overall Network</i>	26

Include a map showing the Bus networks into the Local Transport Plan.

Appendix 1 – Local Transport Plan Figures, Material Alterations

Carrick on Shannon - Cortober
Recommended Cycling Scheme

**Original Fig. 6.3
included in the
Draft Local
Transport Plan**




Legend:

Priority 1

- Improve existing cycle path
- - - Improvement to cycling facilities

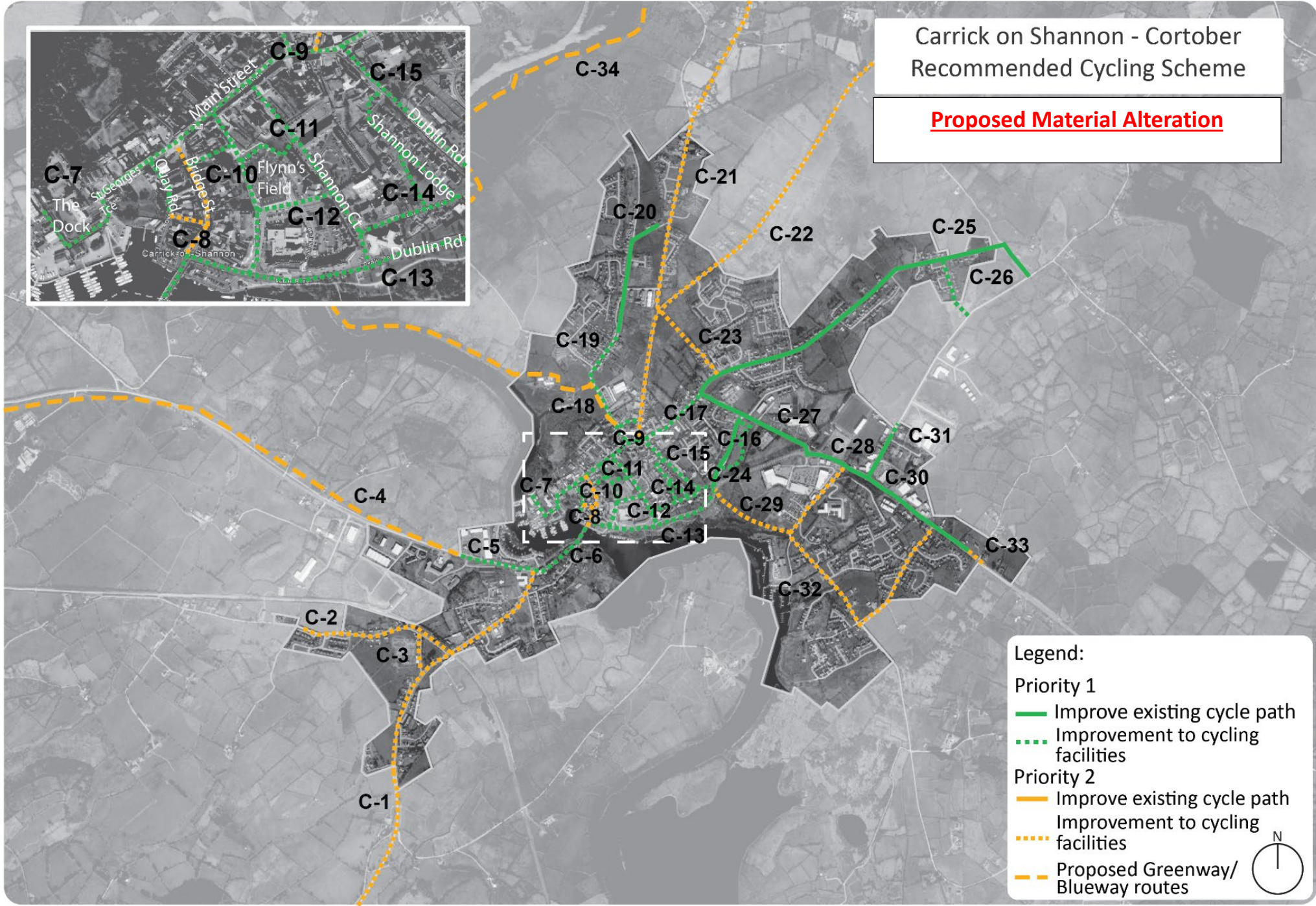
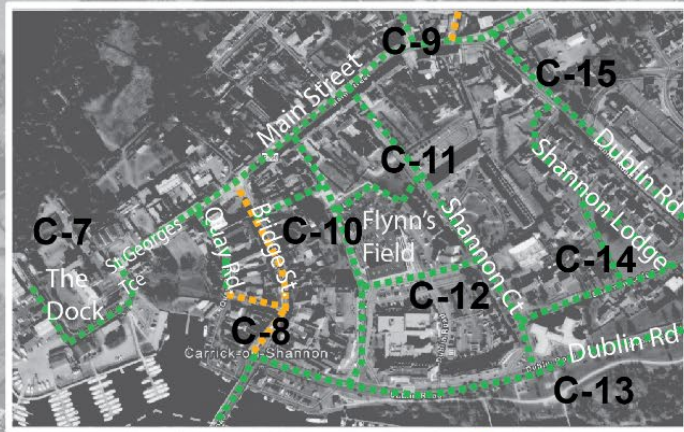
Priority 2

- - - Improve existing cycle path
- - - Improvement to cycling facilities
- - - Proposed Greenway/Blueway routes



Carrick on Shannon - Cortober Recommended Cycling Scheme

Proposed Material Alteration



Legend:

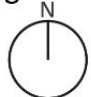
Priority 1

- Improve existing cycle path
- ... Improvement to cycling facilities

Priority 2

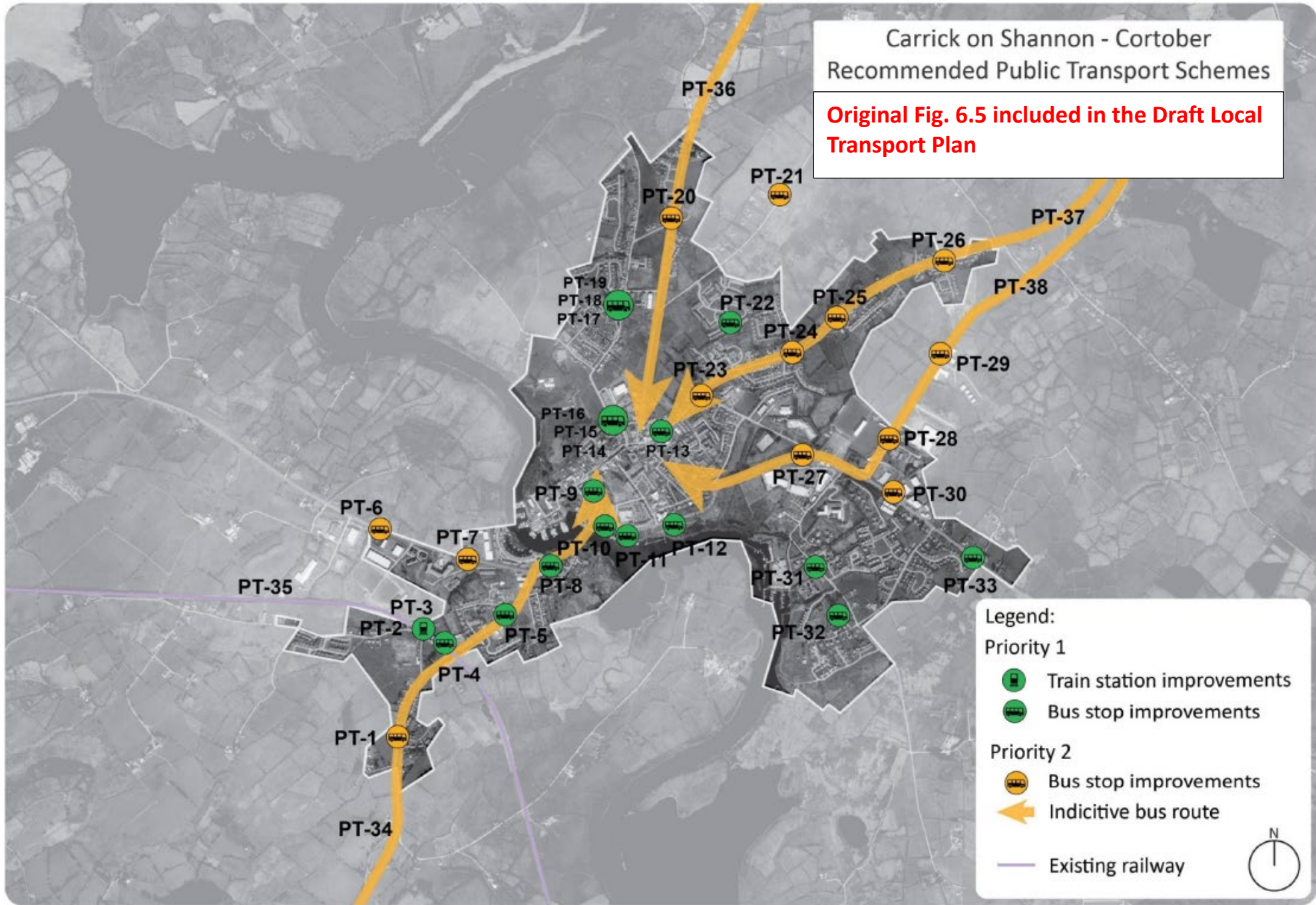
- Improve existing cycle path
- ... Improvement to cycling facilities

--- Proposed Greenway/Blueway routes



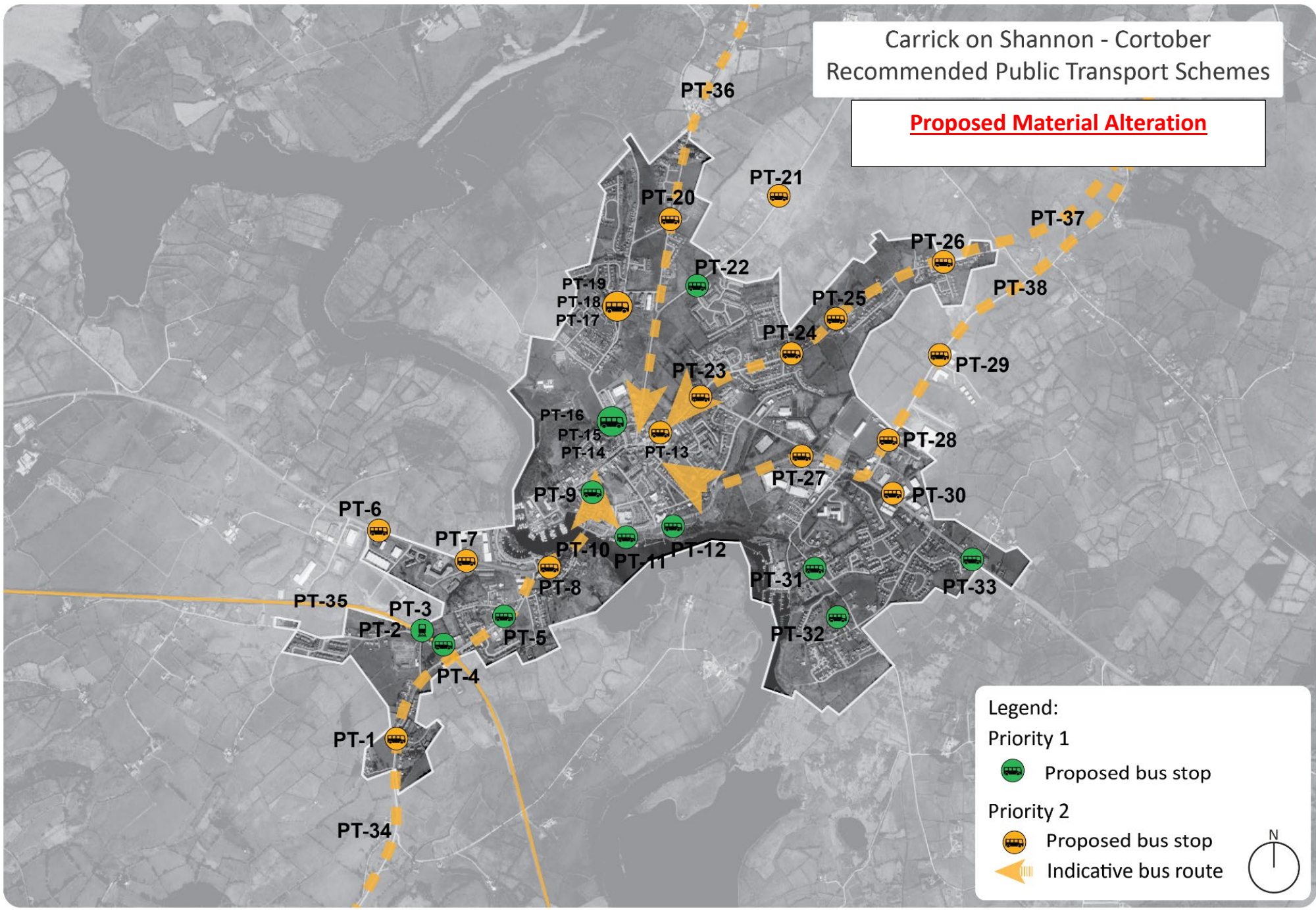
Carrick on Shannon - Cortober
Recommended Public Transport Schemes

Original Fig. 6.5 included in the Draft Local
Transport Plan



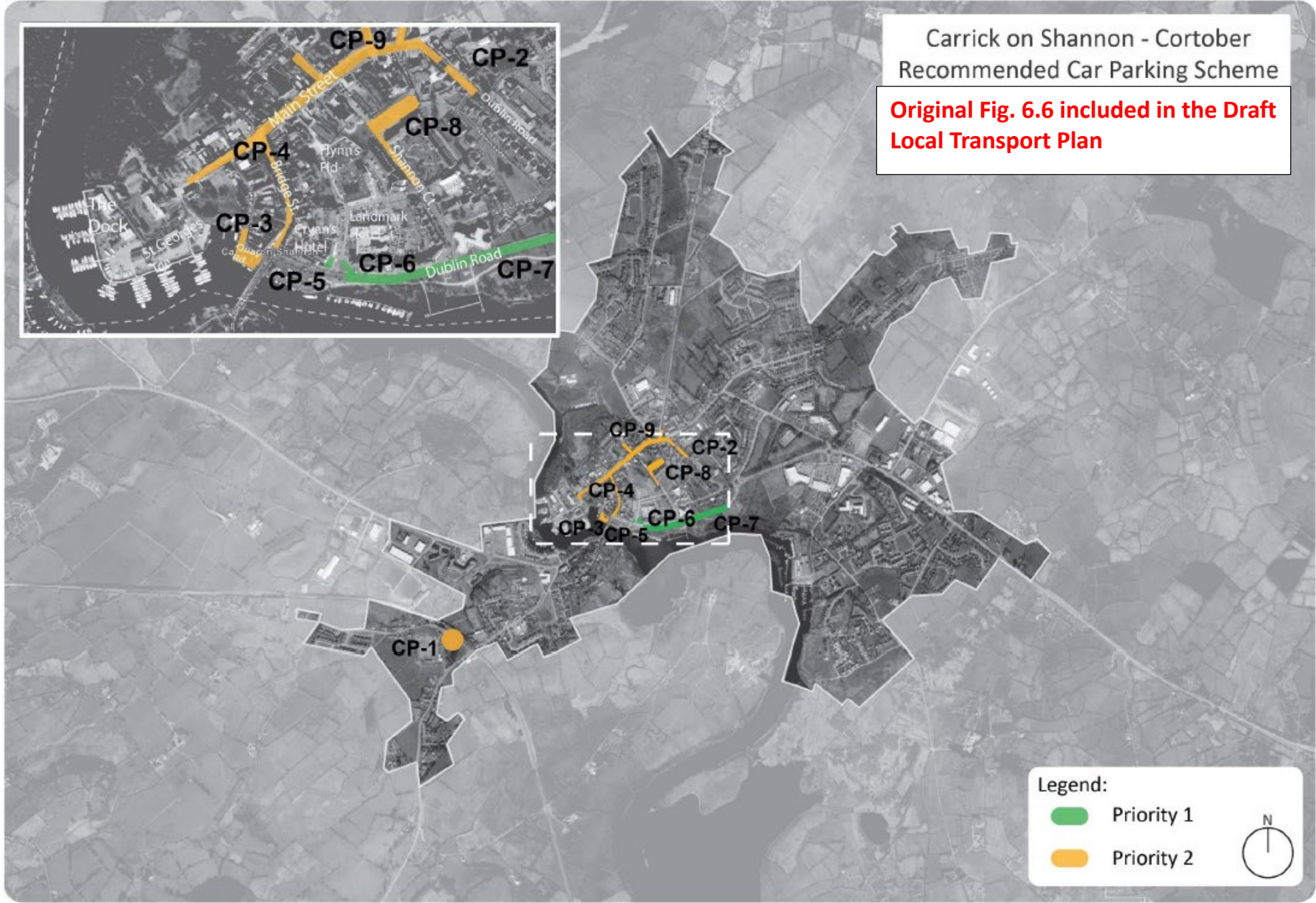
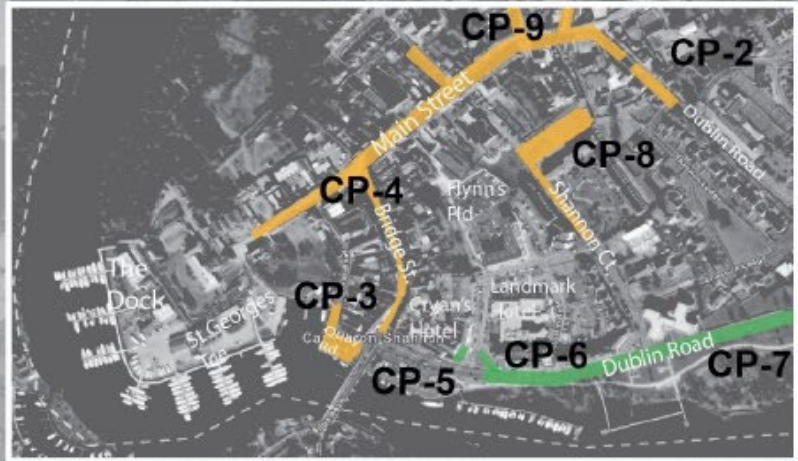
Carrick on Shannon - Cortober Recommended Public Transport Schemes

Proposed Material Alteration



Carrick on Shannon - Cortober
Recommended Car Parking Scheme

**Original Fig. 6.6 included in the Draft
Local Transport Plan**

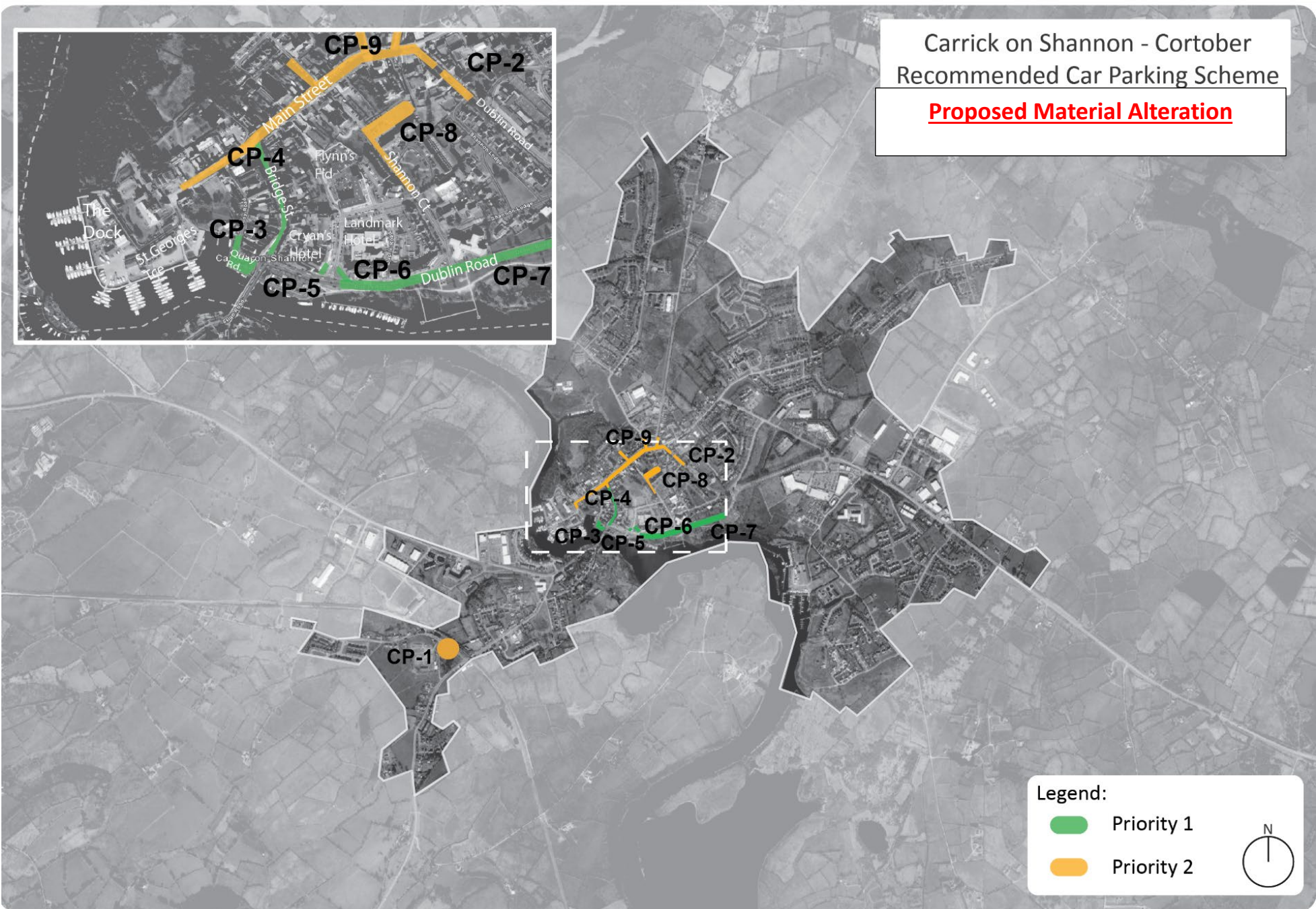
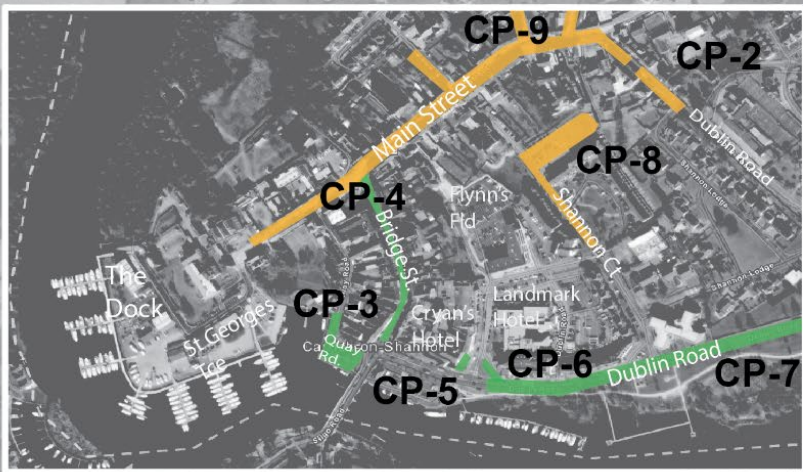


Legend:

- Priority 1 (Green line)
- Priority 2 (Orange line)

Carrick on Shannon - Cortober
Recommended Car Parking Scheme

Proposed Material Alteration



Legend:

- Priority 1 (Green line)
- Priority 2 (Orange line)

