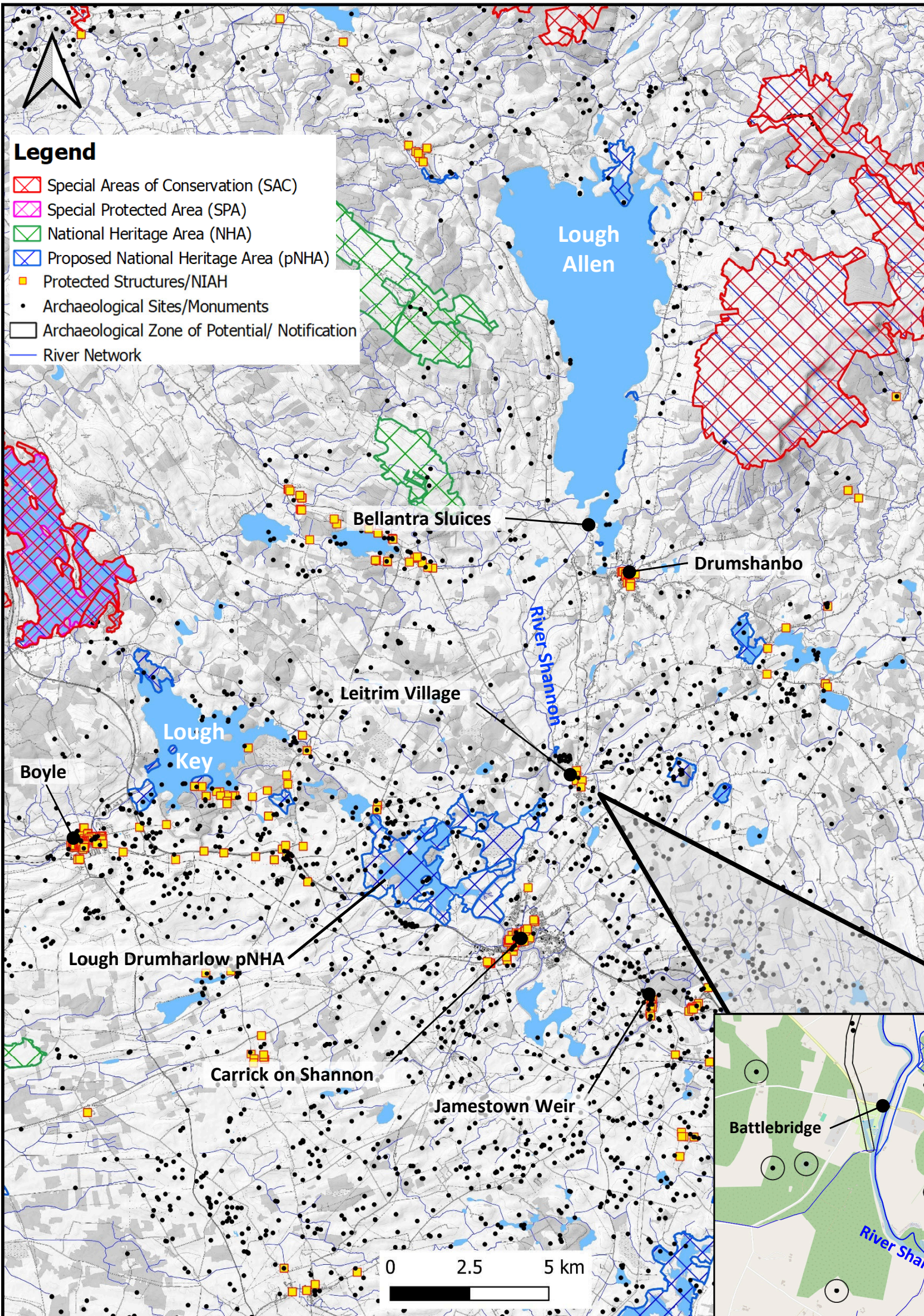


Environmental Constraints and Environmental Assessments



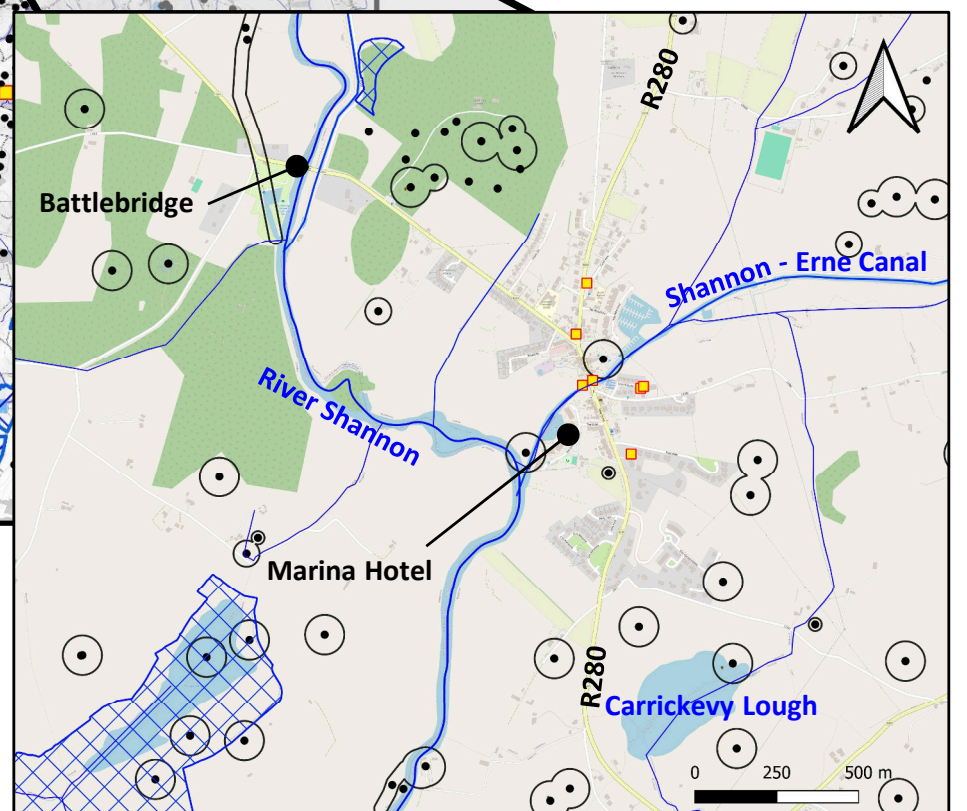
Environmental Constraints

Some key environmental constraints are shown on the maps of the Shannon catchment (right) and Leitrim Village (below). Key constraints include the following:

- Public Amenity and Access
- European Sites (SACs, SPAs)
- Biodiversity, Flora and Fauna
- WFD/ incl. Water Quality
- Use of Floodplains
- Cultural Heritage [RMP/ RPS/ NIAH, zones of Archaeological Potential]
- Landscape/ Protected Views/ Landscape Diversity
- Tourism
- Transport/ River Navigation
- Air Quality/ Noise/ Vibration

Environmental Impact Assessment and Appropriate Assessment processes

As the scheme proceeds to planning, it will undergo Appropriate Assessment and Environmental Impact Assessment. Surveys have been undertaken by the Project Team to enable the preparation of environmental reports to support a planning application.



Interaction with other Projects

Interaction with other key projects in the area include:

- Carrick on Shannon to Battlebridge Blueway
- Leitrim County Development Plan