

D Y E R A S S O C I A T E S

PG/1438/PLAN

07 October 2002

Fian Joyce  
Chief Fire Officer  
Aras on Chontae  
Carrick-on-Shannon  
Co. Leitrim  
Ireland



Dear Fian

**MBNA IRELAND OPERATIONS CENTRE PHASE 2**  
**FIRE CERTIFICATE APPLICATION AMENDMENTS**

Please find attached three copies of the report for amendments to the Fire Safety Certificate FS/02/09 for MBNA Operations Centre Phase 2 and associated drawings.

I trust, the report has adequately addressed the issues I have recently discussed with John Keane. To avoid any confusion with earlier revisions of drawings we have enclosed three copies of all drawings issued with this application.

However, should you have any question to the above, please do not hesitate to contact me on 0044 7887 555106 or 0044 20 7663 2882.

Yours sincerely

Peter Greiner  
Associate  
Dyer Associates

Encl.

88 Gray's Inn Road  
London  
WC1X 8AA

T +44 (0)20 7663 2880  
F +44 (0)20 7663 2881  
office@dyer-associates.co.uk

www.dyer-associates.co.uk



D.A. Cheltenham Limited  
Company Number 1546514  
Registered in England

CHELtenham  
LONDON





**AMENDMENTS II  
TO FIRE SAFETY CERTIFICATE**

**For**

**MBNA OPERATIONS CENTRE BUILDING  
PHASE 2  
AT ATTIFINLAY TOWNLAND  
CARRICK-ON-SHANNON  
CO LEITRIM**

## 1.0 INTRODUCTION

### 1.1 Scope

This Report is submitted with drawings and other documentation as an amendment to the Fire Safety Certificate FS/02/09 under Part III of the Building Control Regulations 1997 granted 26 March 2002. It replaces the amended report dated 18 April 2002. This report consolidates all amendments made to the original fire safety report and the subsequent Fire Safety Certificate FS/02/09.

This report needs to be considered in conjunction with the report submitted for the Fire Safety Certificate for Phase 1 (FS/02/09).

The purpose of this Report is to identify those areas where changes occurred to the scheme submitted with the above report.

The principle Requirements established in the initial report for the sections listed below remain unchanged unless an amendment is specifically stated.

- Section 2.1 Requirement B1: Means of Escape in Case of Fire
- Section 2.2 Requirement B2: Internal Fire Spread (Linings)
- Section 2.3 Requirement B3: Internal Fire Spread (Structure)
- Section 2.4 Requirements B4: External Fire Spread
- Section 2.5 Requirement B5: Access and Facilities for the Fire Services

### 1.2 Outline Description of the Development

Although the use of the development remains as previously stated the number of staff for the Open Plan areas Phase 2 has been finalised and the following figures apply:

- At ground floor level 329 staff in the open plan office areas and cellular offices
- At first floor level 375 staff in the open plan office areas and cellular offices

As stated in the original report, there will also be air handling and other plant located on the roof of the proposed building.

## 2.0 DEMONSTRATION OF COMPLIANCE

### 2.1 REQUIREMENT B1: MEANS OF ESCAPE IN CASE OF FIRE

#### 2.1.1 Estimated Peak Occupant Levels, Exit Widths and Storey Exits

**Ground Floor:** Although the occupancy in the Open Plan office was increased from 257 to 329, the available room exits both in width and in number cater for a total of 1200 people. A change is therefore not required.

**First Floor:** The occupancy in the Open Plan office was increased from 350 to 375. The exit width previously available allowed for a total of 360 people. To accommodate the increased number of people in this area, it was agreed with the ACF to provide an additional exit route through Education Room 2/237. The Education Room is used as a training room with no staff permanently resident. This additional escape route is independent from the main route. The two routes only rejoin within the larger confines of the atrium.

Between the existing exits and this new alternative the exit capacity now caters for a total of 520 people as well as offering an alternative escape route.

As to further mitigating measures, we also refer to the compensating factors described under 2.1.5 below:

## 2.1.3.2 Storey Exits

Location	Estimated Peak Occupant Demand <sup>(1)</sup> (persons)	Proposed Minimum Storey Exit Widths (mm) <sup>(2)</sup>	Exit Capacity (persons) <sup>(2)</sup>
Ground Floor Atrium	303	2 @ 1800 + 3 @ 1500	1260
Ground Floor Phase 2	272	1 @ 1800 + 4 @ 1500	1200
First Floor Atrium	82	2 @ 1300 + 1 @ 1700 + 1 @ 1800	860 <sup>(5)</sup>
First Floor Phase 2	350	2 @ 1800	360 <sup>(5)</sup>
Roof Top	4	1 @ 800	50

NOTES (1) Ex Table 2.1.2 above.

(2) Width refers to:

(a) Minimum open able leaf width of doors or in the case of double leaf doors the aggregate open able leaf width (subject to the door leaf opening to an angle of at least 90°)

(b) clear width of corridor/passageway measured between walls or other obstructions such as columns, at shoulder level (i.e. 1500mm above floor level) -: all obstructions (i.e. door hardware, handrails and skirtings) which intrude less than 100mm into this width are disregarded.

It is noted that widths in Table above are the minimum required widths for Part B compliance. Widths in excess of these may be proposed to meet functional or other considerations.

(3) Allowing for the discounting of one (widest) exit and capacity calculated in accordance with Table 3 of BS 5588: Part 11.

(4) It is considered appropriate to adopt the "leaf width" approach to the sizing of exits notwithstanding the "clear width" definition in BS5588 : Part 11 having regard to the following :

(i) The definition in 1.0.10(c) (i) of TGDB continues to adopt "leaf width" even through the BS5588: Part 11 code was issued prior to publication of TGDB: 1997.

(ii) It being noted that "leaf width" is the criterion in all other codes in the BS5588: suite of codes.

(iii) It being noted that "leaf width" is also the criterion in the UK Approved Document B and in the Northern Ireland Technical Booklet E.

(5) In relation to the means of escape from the first floor, it is considered acceptable to consider the use of the accommodation stairs in the atrium area in the exit capacity calculations on the following basis:

(i) The atrium will be a separate compartment to the office areas.

(ii) The fact that the entire building is sprinkler protected will reduce the potential for a fire in the building cutting off more than one of the escape route from the first floor.

(iii) In relation to the upper level of the atrium area the offices and conference rooms have two alternative means of escape into Phase 1 and Phase 2 office areas, which are fire separated (half hr compartmentation) from the atrium.

(6) Due to the following factors the previously proposed protected corridors between the Open Plan office and the Atrium Space at 1<sup>st</sup> Floor are not deemed to be required anymore :

(iv) The travel distances to a place of safety (Protected stair well or separate fire compartment) are within the limits described under 2.1.5, table 1 of BS 5588: Part 11.

(v) The entire building is sprinkler protected reducing the potential for a fire in the building cutting off more than one of the escape route from the first floor.

(vi) The offices and conference rooms have two alternative means of escape into Phase 1 and Phase 2 office areas, which are fire separated (half hr compartmentation) from the atrium.

**OPERATIONS CENTRE MBNA CARRICK-ON-SHANNON, PHASE 2****Amendments to Fire Safety Certificate****2.1.5 Travel Distance**

As previously stated the travel distances are generally within the limits identified in table 1 of BS 5588: Part 11.

The only exception to this is the new Conference Room 2/235 with a travel distance of approximately 30 m.

To compensate for the increased travel distance the following measures will be implemented:

- The room is only used for meetings and has no permanent resident
- The building will be equipped with a fire detection and alarm system
- A sprinkler system will be provided to all areas
- Glazed screens between the Conference Room and the adjacent Open Plan Offices will create early awareness of any potential hazard in the Open Plan area.

In addition to the above, the following operational procedures are in place:

- 24 – hour security operation within the building
- A number of fire wardens are nominated on each floor
- Staff has been inducted to Fire escape procedures
- CCTV cameras to main corridors

We also refer to Section 2.1.10 of the initial report

**2.3 REQUIREMENT B3: INTERNAL FIRE SPREAD (STRUCTURE)****2.3.1 Ceiling and Raised Floor Voids**

Contrary to the initial Fire Safety Report FS/02/09, the ceiling void to the Ground Floor Open Plan Offices is constructed in accordance with exemption to Table 3.3 of TGD-B, 2 as listed below. It is therefore not considered necessary to install cavity barriers.

- Cavity is over an undivided room.
- The room and the cavity together are compartmented from the rest of the building.
- An automatic fire detection and alarm system is fitted in the building with smoke detectors in the cavity and in the return air ducting which stops circulation of the ventilation system.
- The suspended ceiling and its supports are of non-combustible construction.
- The flame spread rating of any pipe insulation is to be at least Class 1.
- Any electrical wiring laid in the void is laid in metal trays
- Any other materials in the cavity are of "limited combustibility"
- The extension of the exemption from note (2) to Table 3.3 of TGDB to the raised floor voids in the open plan offices is considered reasonable in this case given the presence of automatic sprinklers in the building

manufacturer's details to achieve the minimum fire ratings specified in Table 2.3.2.1 above

**2.3.3 Compartmentation****2.3.3.1 Compartment Sizes Proposed**

Location	Compartment No.	No. of Storeys	Purpose Group	Size Proposed		TGD-B (Table 3.1) <sup>(2)</sup>	
				Area <sup>(1)</sup> (m <sup>2</sup> )	Vol (m <sup>3</sup> )	Area (m <sup>2</sup> )	Vol (m <sup>3</sup> )
Ground & First Floor Open Plan Offices	1	2	3	2225	18245	9200	56000
Atrium	2	2	3	800	8000	9200	56000
Kitchen	3	1	3	100	585	9200	56000

NOTES (1) Area of largest floor in compartment concerned.

## Amendments to Fire Safety Certificate

- (2) *Areas and Volume have been doubled as building is equipped with automated Sprinkler System*

In addition to the above, the following special fire risk areas are to be separated from adjoining spaces in accordance with Table 11 of BS5588: Part 11

Location / Room	Proposed Period of Fire Resistance
Stores and Plant Rooms	30
TER (comms) Room (Clients Insurers Requirement)	120

Note: The original fire safety report specified a 30min separation for Office Stores. After reassessing the potential risk of the stores the ACF agreed that a fire rated separation would not be required due to the following factors:

1. The stores are used for normal office supplies only. It is not intended to store any highly inflammable items
2. The stores are covered by the building sprinkler system
3. Therefore no requirements for fire dampers for services passing through the store.

### 3.0 AMENDMENTS CAFETERIA

Since the submission of the initial fire safety report the following amendments to the cafeteria design have been implemented:

- Inclusion of some "Display cooking area" like a grill with deep fryer and a deli counter for fresh sandwiches.
- Changes to the dishwasher area
- Additional servery counters to the cafeteria

The new grill area will be provided with a dedicated fire suppression system incorporated into the extract hood. The remaining area is covered by the overall sprinkler system.

The main cooking area within the existing Phase 1 building is separated from the cafeteria by a compartment wall. Doors in this wall are FD 30s.

Due to the above measures being implemented, the cafeteria is considered low risk and no additional fire safety precautions are considered necessary.

#### 4.0 ROOF LEVEL STORAGE AREA

With reference to drawing IRL/CoS/ARC/P-05/F we hereby confirm, that a small storage area will be provided at roof level for the storage of building maintenance materials like floor tiles, ceiling tiles, carpet tiles, etc. The area is fully sprinklered and has two separate escape routes.

The alternative escape route for the roof storage area was changed from egress to the flat roof area to a route through the adjacent plant space. Due to the following facts it was agreed with the ACF that this is acceptable:

- Occupation will be infrequent and only one/two people
- Store and adjacent plant area are protected by Sprinkler system
- There are still two independent means of escape available from the area.

#### 5.0 AMENDMENTS TO SERVICE BUILDING

The attached drawing IRL/CoS/ARC/P-07/F shows the proposed alterations to the existing Service Building.

All changes will be constructed in accordance with the principals established by the initial Fire Safety Report FS/00/11 by Michael Slattery & Associates

In addition to the above, it was agreed with the ACF that a standpipe with connection for fire hoses would be provided from the service yard to each of the two fuel storage area. Allowing the fire brigade to pump foam into without having to enter the building. The location of those foam inlets will be located outside the existing and new generator room.

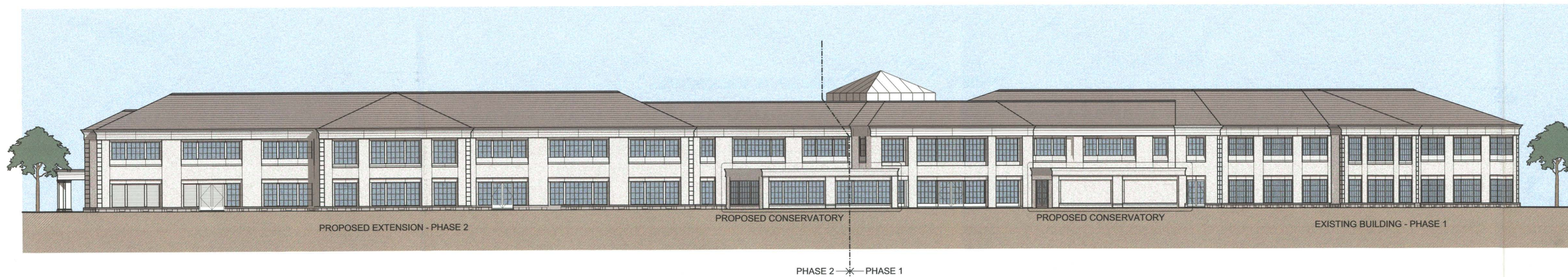
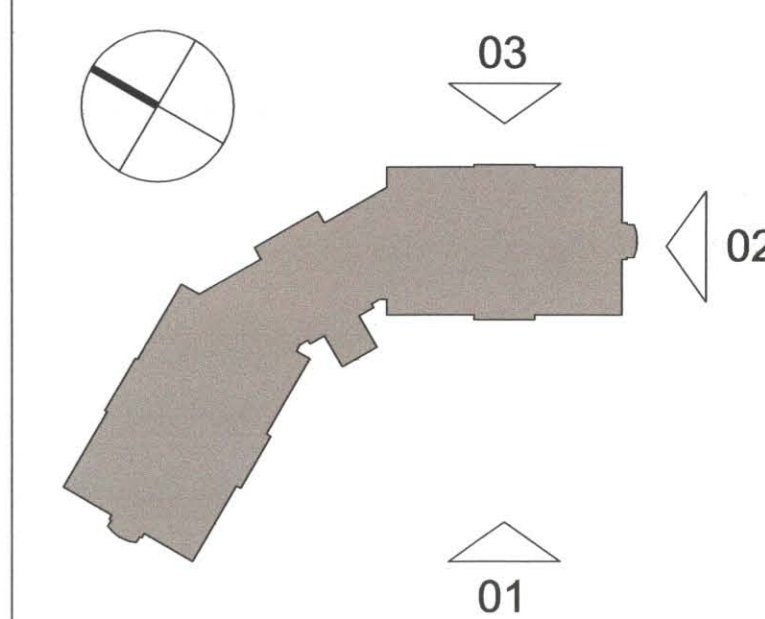
## Appendix 1: Schedule of Drawings

Drawing Title	Scale	Number	Revision No.	Prepared By *
Proposed Site Plan Fire Strategy	1:500	IRL/CoS/ARC/P-02/F	A	DA
Proposed Site Plan	1:1000	IRL/CoS/ARC/P-02	G	DA
Fire Strategy Level 1 (Ground Floor) Plan	1:200	IRL/CoS/ARC/P-03/F	G	DA
Fire Strategy Level 2 (First Floor) Plan	1:200	IRL/CoS/ARC/P-04/F	F	DA
Fire Strategy Level 3 (Roof) Plan	1:200	IRL/CoS/ARC/P-05/F	E	DA
Fire Strategy Sections	1:200	IRL/CoS/ARC/ S-04/F	F	DA
Elevations Sheet 1	1:250	IRL/CoS/ARC/E-01	J	DA
Elevations Sheet 2	1:250	IRL/CoS/ARC/E-02	H	DA
Service Building	1:100	IRL/CoS/ARC/P-07/F	A	DA
Smoking Pavilion	1:100	IRL/CoS/ARC/V-06	B	DA

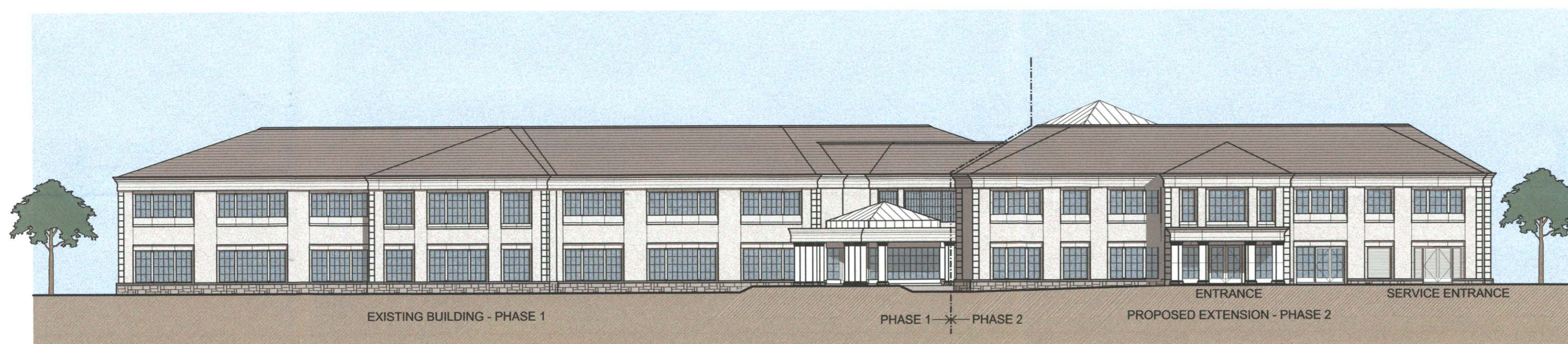
\* DA = DA Design + Management



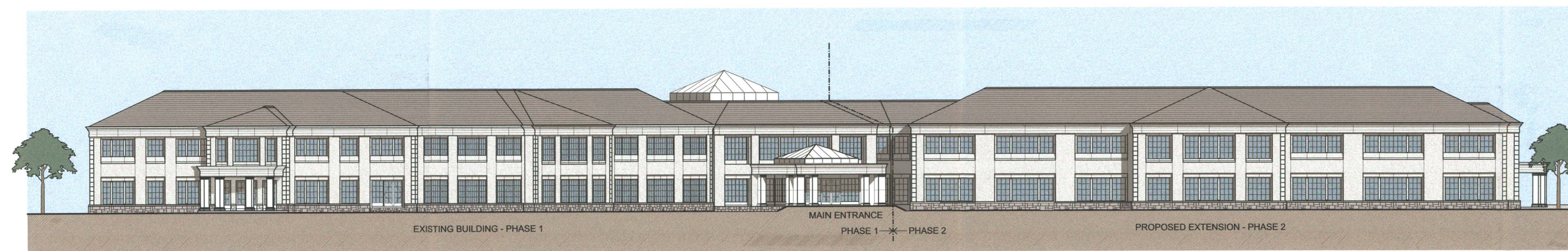
USE FIGURED DIMENSIONS ONLY - DO NOT SCALE OFF DRAWING



03 - NORTHEAST ELEVATION



02 - SOUTHEAST ELEVATION



01 - SOUTHWEST ELEVATION



J	15/04/02	SC	
H	08/04/02	NW	PG
G	20/03/02	NW	PG
F	27/02/02	NW	PG
E	14/02/02	SH	PG
D	07/02/02	SH	PG
C	29/01/02	SH	PG
B	15/11/01	SH	PG
A	25/10/01	DM	PG
REV	DATE	DRAWN	CHECK
	04/09/01	DC	PG

OUTLINE  PLANNING  TENDER  CONTRACT

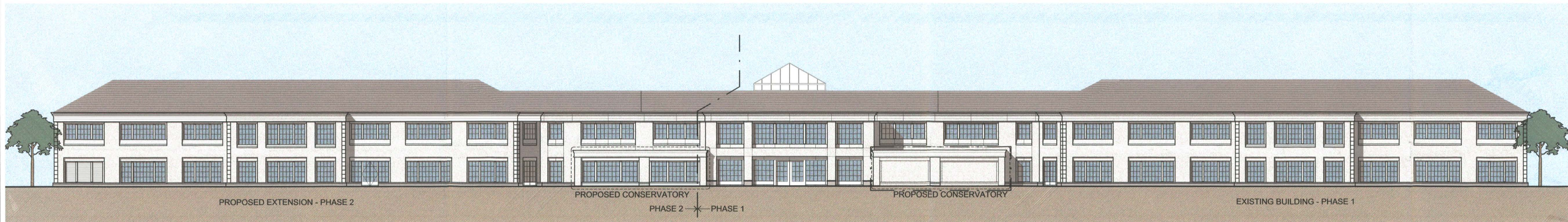
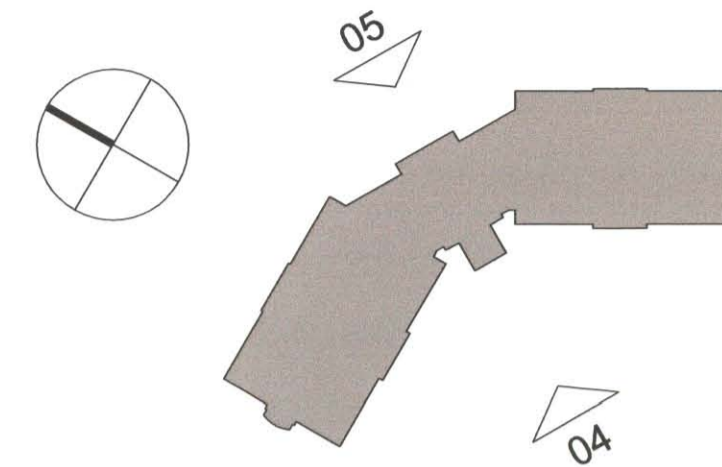
PROJECT: MBNA - Carrick on Shannon

TITLE: Operations Centre, Ph.2 Elevations - Sheet 1

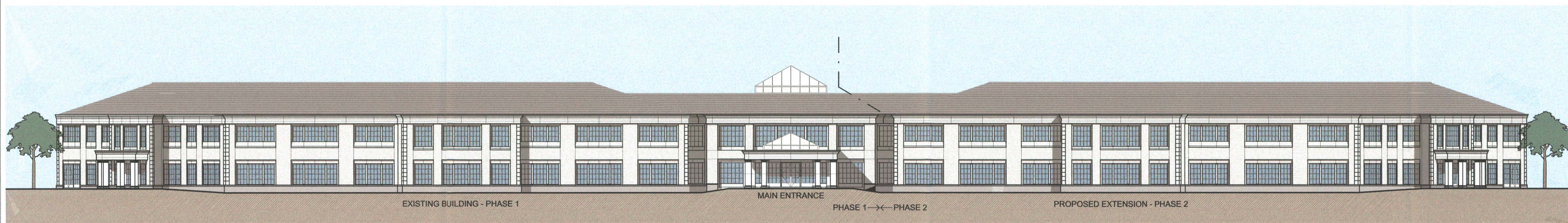
PROJECT NO: 1438 DRAWING NO: IRL/CoSIARC/E-01

CONSULTANT: Dyer Associates

USE FIGURED DIMENSIONS ONLY -  
DO NOT SCALE OFF DRAWING



05 NORTH ELEVATION



04 SOUTH ELEVATION



H	15/04/02	SC	
G	20/03/02	NW	PG
F	28/02/02	NW	PG
E	14/02/02	SH	PG
D	08/02/02	SH	PG
C	28/01/02	SH	PG
B	15/11/01	SH	PG
A	25/10/01	DM	PG
REV	DATE	DRAWN	CHECK
	04/09/01	DC	PG

OUTLINE	<input type="checkbox"/>	PLANNING	<input checked="" type="checkbox"/>	TENDER	<input type="checkbox"/>	CONTRACT	<input type="checkbox"/>	
PROJECT	MBNA - Carrick on Shannon						INSTRUCTION NO.	
TITLE	Operations Centre, Ph.2						INSTRUCTION DATE	
	Elevations - Sheet 2						SCALE	1:250
PROJECT NO.	1438	DRAWING NO.	IRL/CoS/ARC/ E - 02		REV	H		
CONSULTANT								



NOTES

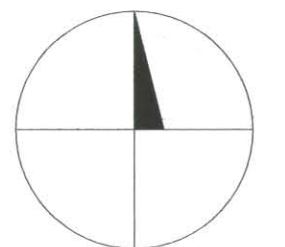
USE FIGURED DIMENSIONS ONLY -  
DO NOT SCALE OFF DRAWING

- APPLICATION SITE BOUNDARY
- OTHER LAND IN APPLICANT'S CONTROL

- PROPOSED CONSERVATORY
- CURVED FENCE REFER TO 01 V-40
- PROPOSED TERRACE
- PROPOSED CONSERVATORY
- PROPOSED EXTENSION

- PROPOSED SERVICE ROAD
- HEATING FUEL TANK IN GROUND
- FILLER POINT IN FACE OF RETAINING WALL
- FOOTPATHS TO MATCH PHASE 1
- PROPOSED RELOCATION OF SMOKING ENCLOSURE

RECEIVED  
 10 OCT 2002  
 LEITRIM C.C. COUNCIL  
 FIRE DEPARTMENT

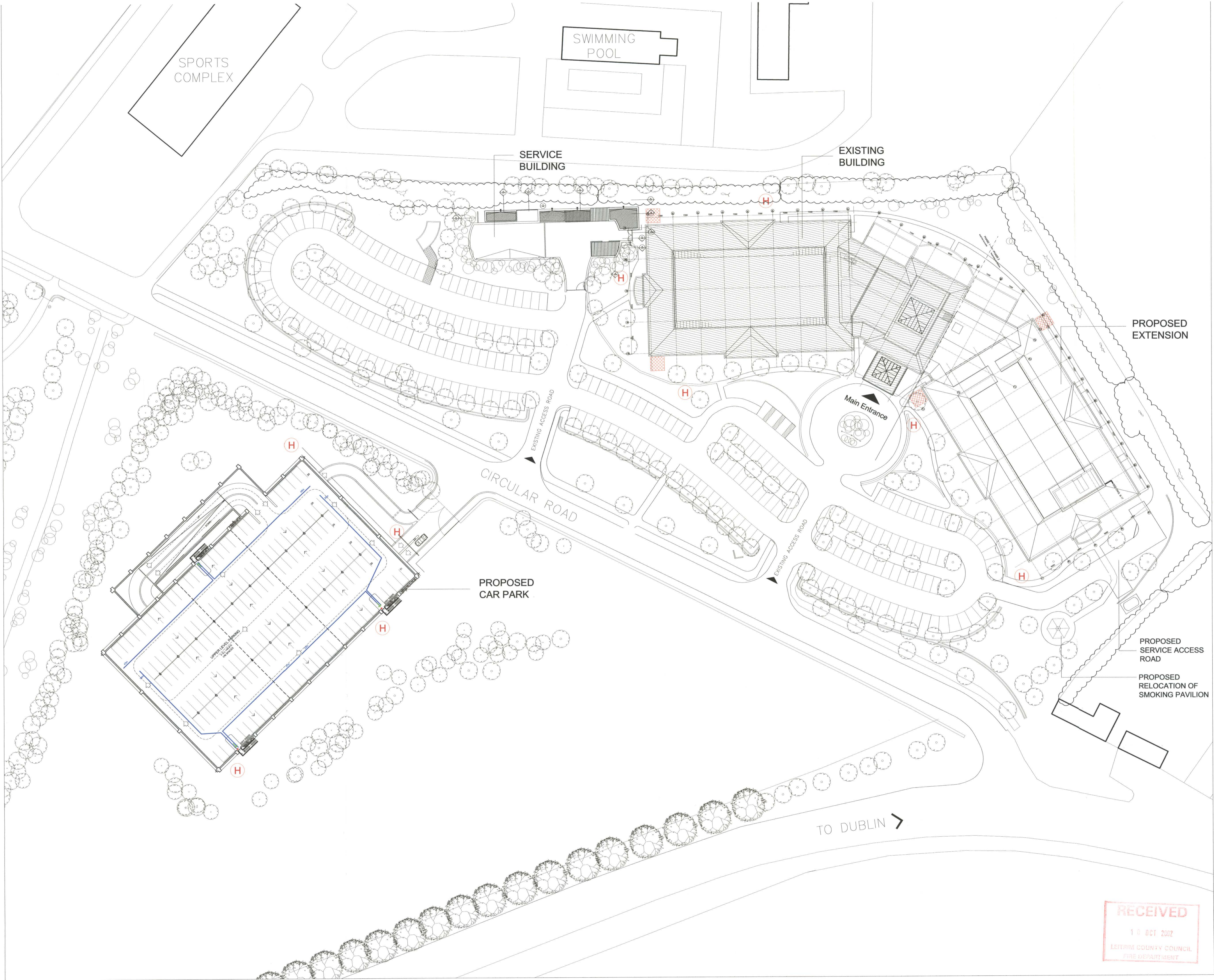


G	25/03/02	MJ	
F	14/02/02	SH	PG
E	08/02/02	SH	PG
D	29/01/02	SH	PG
C	20/12/01	MG	PG
B	15/11/01	SH	PG
REV	DATE	DRAWN	CHECK
	18/09/01	DC	PG

OUTLINE  PLANNING  TENDER  CONTRACT

PROJECT: MBNA - Carrick on Shannon  
 TITLE: MBNA Operations Centre, Ph.2 Proposed Site Plan  
 SCALE: 1:1000  
 PROJECT NO: 1438  
 DRAWING NO: IRL/CoS/ARC/P-02  
 CONSULTANT: G

**DA DYER ASSOCIATES**  
 LAURISTON COURT - MONTPELLIER STREET - CHELTENHAM - GL50 1TE - TEL +44 (0)1242 524463  
 38 GRAYS INN ROAD - LONDON - WC1X 8AA - TEL +44 (0)20 7545 2880  
 3 ELY PLACE - DUBLIN - 2 - EIRE - TEL +353 (0) 1662 3611

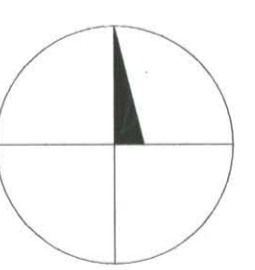


NOTES

This drawing is for fire safety certification purposes only.  
Do not scale from drawing - use figured dimensions only.

KEY

- H FIRE HYDRANT
- HARDSTANDING FOR LADDER ACCESS



REV	A	DATE	19/11/01	DRAWN	SH	CHECK	SH	PG
			15/10/01					
OUTLINE	<input type="checkbox"/>	PLANNING	<input checked="" type="checkbox"/>	TENDER	<input type="checkbox"/>	CONTRACT	<input type="checkbox"/>	
PROJECT	MBNA - Carrick on Shannon							
TITLE	MBNA Operations Centre, Ph.2 Proposed Site Plan - Fire Strategy 1:500							
PROJECT NO.	1438	DRAWING NO.	IRL/CoS/ARC/P - 02F	REV	A			












**DA DYER ASSOCIATES**  
LAURISTON COURT - MONTPELLIER STREET - CHELTENHAM - GLOS TS - TEL +44 (0) 1242 524463  
88 GRAY'S INN ROAD - LONDON W1C 7BA - TEL +44 (0) 20 7663 2880  
3 ELY PLACE - DUBLIN 2 - ERE - TEL +353 (0) 1662 3611



**NOTES**

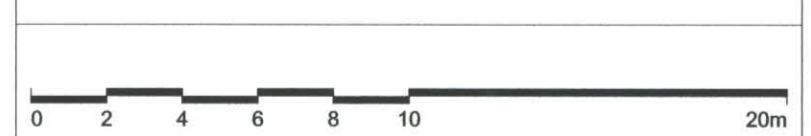
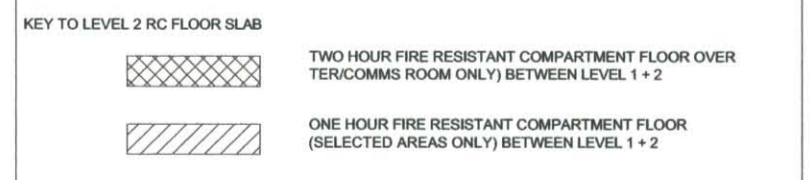
**Fire Legend**

This drawing is for fire safety certification purposes only. Do not scale from drawing - use figured dimensions only. Existing compartment walls are shown dotted.

- 
 Compartment wall/ floor achieving 120 minutes fire resistance rating (stability, integrity and insulation) in accordance with BS476: Part 8/20-24 and relevant recommendations of Appendix A of technical Guidance Document B, and in the case of a wall is to extend full storey height.
- 
 Compartment wall/ floor achieving 60 minutes fire resistance rating (stability, integrity and insulation) in accordance with BS476: Part 8/20-24 and relevant recommendations of Appendix A of technical Guidance Document B, and in the case of a wall is to extend full storey height.
- 
 Compartment wall/ floor achieving 30 minutes fire resistance rating (stability, integrity and insulation) in accordance with BS476: Part 8/20-24 and relevant recommendations of Appendix A of technical Guidance Document B, and in the case of a wall is to extend full storey height.
- 
 30 minutes fire resistance rating (integrity and insulation) in accordance with BS476: Part 8/20-24 and relevant recommendations of Appendix A of technical Guidance Document B, and in the case of a wall is to extend full storey height.
- 
 Fire resisting doorset to have not less than 120 minutes integrity rating in accordance with BS476: Part 8/20-22 and to have a leakage rate not exceeding 3m<sup>3</sup>/m<sup>2</sup>/hour (head and jambs) when tested at 25Pa under BS476: Section 31.1. Doorset to be fitted with an automatic self-closing device which is capable of closing this door from any angle and against any latch fitted to the door.
- 
 Fire resisting doorset to have not less than 30 minutes integrity rating in accordance with BS476: Part 8/20-22 and to have a leakage rate not exceeding 3m<sup>3</sup>/m<sup>2</sup>/hour (head and jambs) when tested at 25Pa under BS476: Section 31.1. Doorset to be fitted with an automatic self-closing device which is capable of closing this door from any angle and against any latch fitted to the door.
- 
 Direct distance to place of safety in metres as indicated on the drawings.
- 
 Location of EXIT signs to be displayed prominently and to be installed according to manufacturers instructions and comply to BS5499, Part 1: 1990.
- 
 Fire hydrant

REV G. FIRE RATED FLOORS OVER AREAS INDICATED; FIRE RATED WALLS AMENDED AROUND LIFT SHAFT  
 REV F. FIRE RATING REMOVED DOOR NO.S 1/015,1/016, 1/017, 1/060, 1/061; FIRE RATED WALLS REMOVED ROOM NO.S: 2/145, 2/144, PART 2/102

REV E. 30 MIN FIRE RATING ADDED TO STORE 2/144, CONFIDENTIAL WASTE 2/136, STORE 2/145; FIRE RESISTANT COMPARTMENT FLOOR REMOVED DUCT 2/112



G	19/09/02	NW	
F	09/09/02	NW	PG
E	03/09/02	NW	PG
D	15/04/02	SC	PG
C	13/02/02	SH	PG
B	21/01/02	SH	PG
A	16/10/01	SH	PG
REV	DATE 18/09/01	DRAWN SH	CHECK PG
OUTLINE	<input type="checkbox"/> PLANNING	<input checked="" type="checkbox"/> TENDER	<input type="checkbox"/> CONTRACT

PROJECT: MBNA - Carrick on Shannon  
 TITLE: MBNA Operations Centre, Ph.2  
 Fire Strategy - Level 1 Plan  
 PROJECT NO: 1438 DRAWING NO: IRL/CoS/ARC/ P - 03/F  
 CONSULTANT: G





NOTES

Fire Legend

This drawing is for fire safety certification purposes only. Do not scale from drawing - use figured dimensions only. Existing compartment walls are shown dotted.

- Compartment wall/floor achieving 120 minutes fire resistance rating (stability, integrity and insulation) in accordance with BS476: Part 8/20-24 and relevant recommendations of Appendix A of technical Guidance Document B, and in the case of a wall to extend full storey height.
- Compartment wall/floor achieving 60 minutes fire resistance rating (stability, integrity and insulation) in accordance with BS476: Part 8/20-24 and relevant recommendations of Appendix A of technical Guidance Document B, and in the case of a wall to extend full storey height.
- Compartment wall/floor achieving 30 minutes fire resistance rating (stability, integrity and insulation) in accordance with BS476: Part 8/20-24 and relevant recommendations of Appendix A of technical Guidance Document B, and in the case of a wall to extend full storey height.
- 30 minutes fire resistance rating (integrity and insulation) in accordance with BS476: Part 8/20-24 and relevant recommendations of Appendix A of technical Guidance Document B. Glazing in these walls to achieve 30minutes fire resistance in terms of integrity only.
- Fire resisting doorset to have not less than 120 minutes integrity rating in accordance with BS476: Part 8/20-22 and to have a leakage rate not exceeding 3m<sup>3</sup>/m<sup>2</sup>/hour (head and jambs) when tested at 25Pa under BS476: Section 31.1. Doorset to be fitted with an automatic self-closing device which is capable of closing this door from any angle and against any latch fitted to the door.
- Fire resisting doorset to have not less than 30 minutes integrity rating in accordance with BS476: Part 8/20-22 and to have a leakage rate not exceeding 3m<sup>3</sup>/m<sup>2</sup>/hour (head and jambs) when tested at 25Pa under BS476: Section 31.1. Doorset to be fitted with an automatic self-closing device which is capable of closing this door from any angle and against any latch fitted to the door.
- Direct distance to place of safety in metres as indicated on the drawings.
- Location of EXIT signs to be displayed prominently and to be installed according to manufacturers instructions and comply to BS5499, Part 1: 1990.
- H Fire hydrant

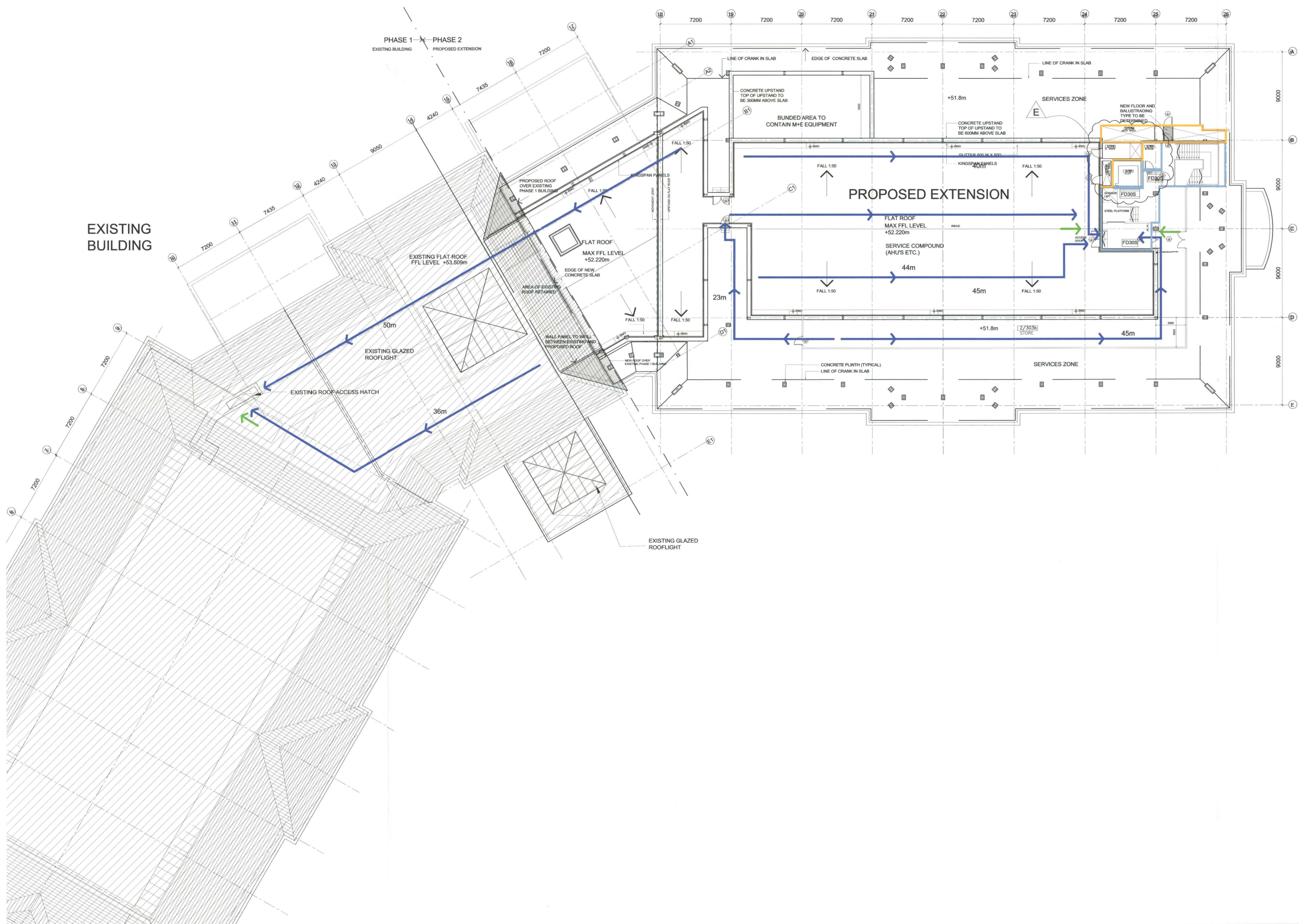
REV F. FIRE RATING REMOVED, DOORS: 2/010, 2/011, 2/045, 2/004, 2/047, 2/006, 2/046, 2/031, 2/030, 2/007, 2/034, 2/032, 2/035, 2/036, 2/037; FIRE RATED WALLS REMOVED ROOMS: 2/237, 2/238, 2/234, 2/211, 2/212, 2/240, 2/213, 2/204, 2/202, PART 2/206

REV E. 30 MIN FIRE RATING ADDED TO STORES: 2/211, 2/212, 2/234, 2/237, 2/238, 2/240 AND ESCAPE ROUTE 2/213, FIRE RESISTANT COMPARTMENT FLOOR REMOVED DUCT 2/215



F	09/09/02	NW	
E	03/09/02	NW	PG
D	15/04/02	SC	PG
C	13/02/02	SH	PG
B	21/01/02	SH	PG
A	15/10/01	SH	PG
REV	DATE 18/09/01	DRAWN SH	CHECK PG

OUTLINE	<input type="checkbox"/>	PLANNING	<input type="checkbox"/>	TENDER	<input checked="" type="checkbox"/>	CONTRACT	<input type="checkbox"/>	
PROJECT	MBNA - Carrick on Shannon						INSTRUCTION NO.	
TITLE	MBNA Operations Centre, Ph.2 Fire Strategy - Level 2 Plan						INSTRUCTION DATE	
PROJECT NO	1438	DRAWING NO	IRL/CoS/ARC/P - 04/F	SCALE	1:200			
CONSULTANT	DA DYER ASSOCIATES						REV	F



**NOTES**

**Fire Legend**

This drawing is for fire safety certification purposes only. Do not scale from drawing - use figured dimensions only. Existing compartment walls are shown dotted.

- Compartment wall/ floor achieving 120 minutes fire resistance rating (stability, integrity and insulation) in accordance with BS476: Part 8/20-24 and relevant recommendations of Appendix A of technical Guidance Document B, and in the case of a wall is to extend full storey height.
- Compartment wall/floor achieving 60 minutes fire resistance rating (stability, integrity and insulation) in accordance with BS476: Part 8/20-24 and relevant recommendations of Appendix A of technical Guidance Document B, and in the case of a wall is to extend full storey height.
- Compartment wall/ floor achieving 30 minutes fire resistance rating (stability, integrity and insulation) in accordance with BS476: Part 8/20-24 and relevant recommendations of Appendix A of technical Guidance Document B, and in the case of a wall is to extend full storey height.
- 30 minutes fire resistance rating (integrity and insulation) in accordance with BS476: Part 8/20-24 and relevant recommendations of Appendix A of technical Guidance Document B. Glazing in these walls to achieve 30minutes fire resistance in terms of integrity only.
- Fire resisting doorset to have not less than 120 minutes integrity rating in accordance with BS476: Part 8/20-22 and to have a leakage rate not exceeding 3m<sup>3</sup>/m/hour (head and jambs) when tested at 25Pa under BS476: Section 31.1. Doorset to be fitted with an automatic self-closing device which is capable of closing this door from any angle and against any latch fitted to the door.
- Fire resisting doorset to have not less than 30 minutes integrity rating in accordance with BS476: Part 8/20-22 and to have a leakage rate not exceeding 3m<sup>3</sup>/m/hour (head and jambs) when tested at 25Pa under BS476: Section 31.1. Doorset to be fitted with an automatic self-closing device which is capable of closing this door from any angle and against any latch fitted to the door.
- Direct distance to place of safety in metres as indicated on the drawings.
- ← Location of EXIT signs to be displayed prominently and to be installed according to manufacturers instructions and comply to BS5499, Part 1: 1990.
- H Fire hydrant

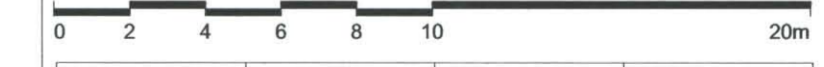
FD120S

FD30S

XX.XXXm



**REV E. FIRE RATING TO WALLS REMOVED**



E	18/09/02	NW	
D	03/09/02	NW	PG
C	15/04/02	SC	PG
B	13/02/02	SH	PG
A	19/01/02	SH	PG
REV	DATE	DRAWN	CHECK
	18/09/01	SH	PG

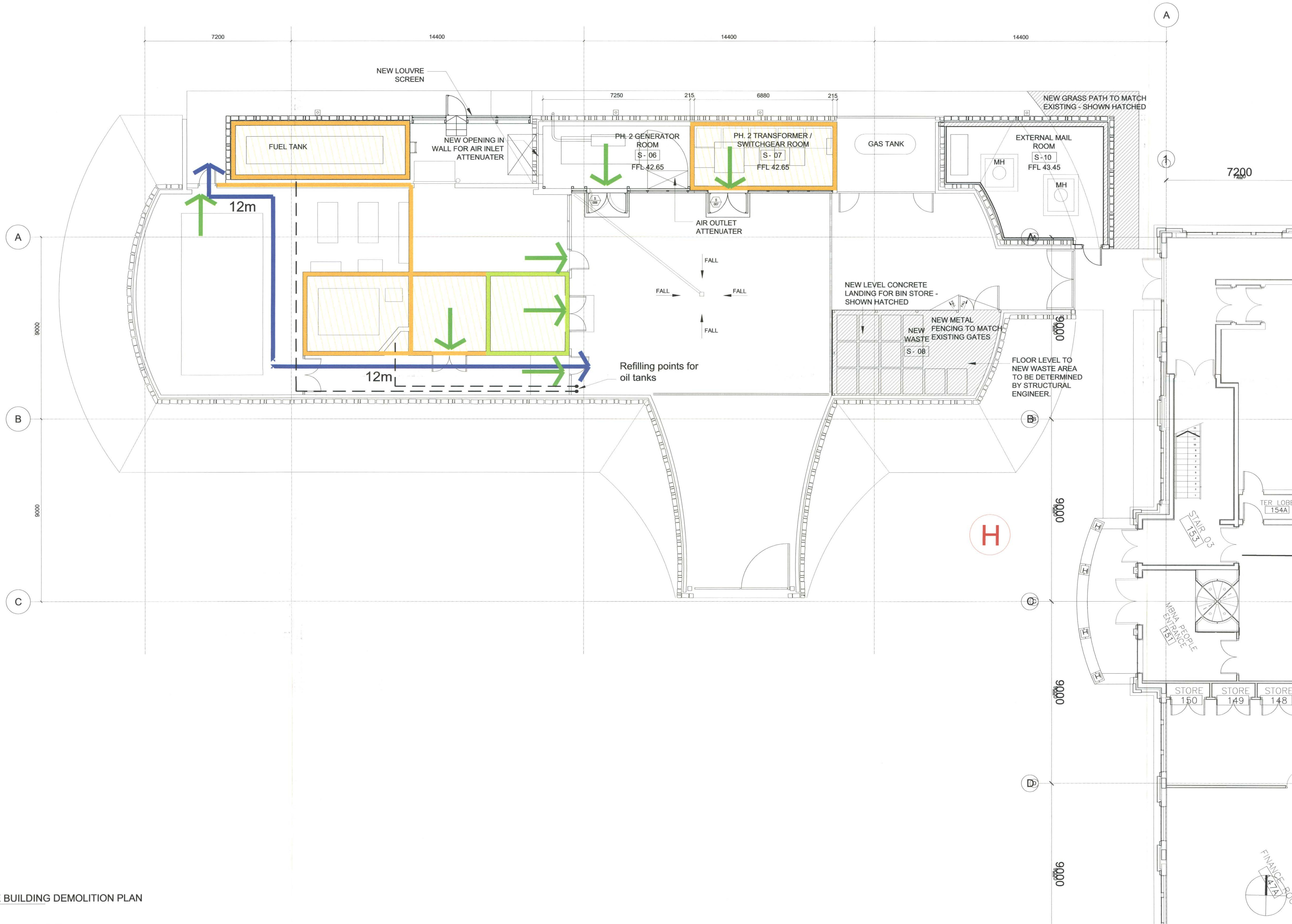
OUTLINE  PLANNING  TENDER  CONTRACT

PROJECT: MBNA - Carrick on Shannon

TITLE: MBNA Operations Centre, Ph.2  
Fire Strategy - Roof Level Plan

PROJECT NO: 1438 DRAWING NO: IRL/CoS/ARC/P - 05/F SCALE: 1:200

CONSULTANT: Dyer Associates



NOTES

Fire Legend

This drawing is for fire safety certification purposes only. Do not scale from drawing - use figured dimensions only. Existing compartment walls are shown dotted.

Compartment wall/floor achieving 120 minutes fire resistance rating (stability, integrity and insulation) in accordance with BS476: Part 8/20-24 and relevant recommendations of Appendix A of technical Guidance Document B, and in the case of a wall is to extend full storey height.

Compartment wall/floor achieving 60 minutes fire resistance rating (stability, integrity and insulation) in accordance with BS476: Part 8/20-24 and relevant recommendations of Appendix A of technical Guidance Document B, and in the case of a wall is to extend full storey height.

Compartment wall/floor achieving 30 minutes fire resistance rating (stability, integrity and insulation) in accordance with BS476: Part 8/20-24 and relevant recommendations of Appendix A of technical Guidance Document B, and in the case of a wall is to extend full storey height.

30 minutes fire resistance rating (integrity and insulation) in accordance with BS476: Part 8/20-24 and relevant recommendations of Appendix A of technical Guidance Document B, Glazing in these walls to achieve 30minutes fire resistance in terms of integrity only.

Fire resisting doorset to have not less than 120 minutes integrity rating in accordance with BS476: Part 8/20-22 and to have a leakage rate not exceeding 3m<sup>3</sup>/m<sup>2</sup>/hour (head and jambs) when tested at 25Pa under BS476: Section 31.1. Doorset to be fitted with an automatic self-closing device which is capable of closing this door from any angle and against any latch fitted to the door.

Fire resisting doorset to have not less than 30 minutes integrity rating in accordance with BS476: Part 8/20-22 and to have a leakage rate not exceeding 3m<sup>3</sup>/m<sup>2</sup>/hour (head and jambs) when tested at 25Pa under BS476: Section 31.1. Doorset to be fitted with an automatic self-closing device which is capable of closing this door from any angle and against any latch fitted to the door.

Direct distance to place of safety in metres as indicated on the drawings.

Location of EXIT signs to be displayed prominently and to be installed according to manufacturers instructions and comply to BS5499, Part 1: 1990.

Fire hydrant

Pipeline for Oil Tank refilling



KEY TO LEVEL 2 RC FLOOR SLAB

- TWO HOUR FIRE RESISTANT COMPARTMENT FLOOR (OVER TERUCCOMMS ROOM ONLY) AT LEVEL 2
- ONE HOUR FIRE RESISTANT COMPARTMENT FLOOR (SELECTED AREAS ONLY) AT LEVEL 2

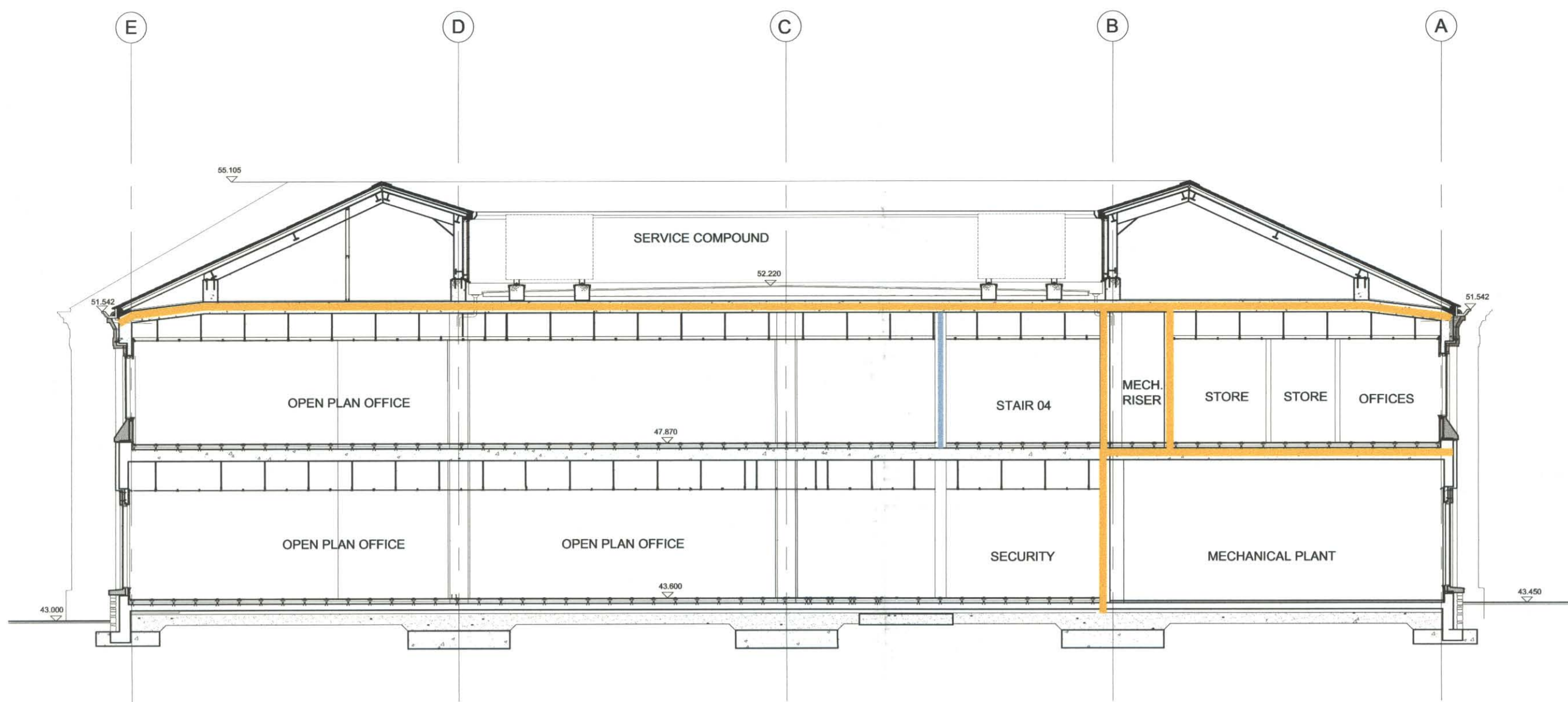


REV A: Drawing title altered

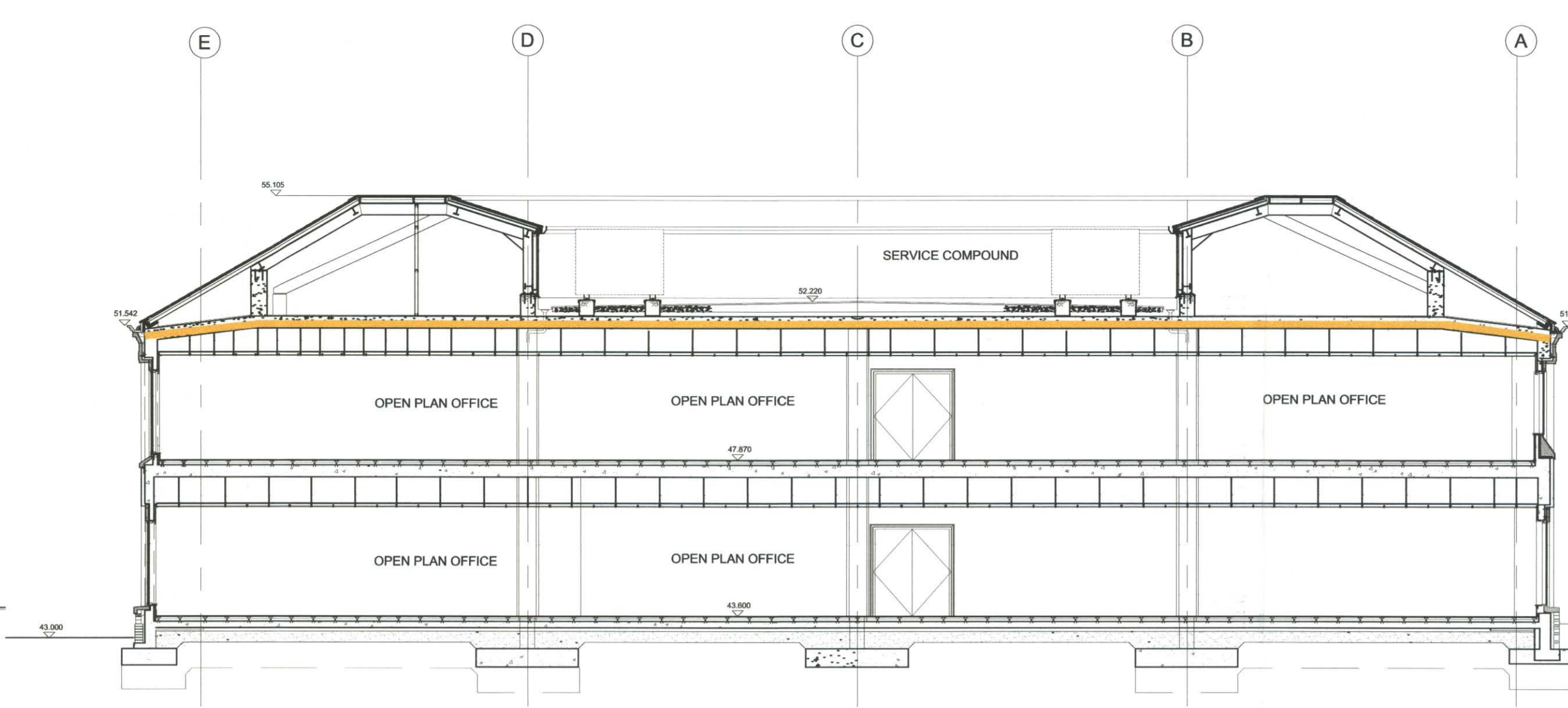
REV	DATE	BY	CHECK
A	22/04/02	SC	PG
	15/04/02	SC	PG
OUTLINE		PLANNING	TENDER
PROJECT		CONTRACT	
PROJECT: MBNA - Carrick on Shannon			
TITLE: MBNA Operations Centre, Ph.2			
Fire Strategy - Service Building			
PROJECT NO	DRAWING NO	SCALE	REV
1438	IRL/CoS/ARC/P - 07/F	1:100@A1	A
CONSULTANT			

**DA DYER ASSOCIATES**  
 LAURISTON COURT - MONTPELLIER STREET - CHELTENHAM - GLOSHP - TEL +44 (0)1242 524463  
 88 GRAYS INN ROAD - LONDON - W1C 8AA - TEL +44 (0)20 7643 2880  
 3 ELY PLACE - DUBLIN - 2 - IRE - TEL +353 (0) 1462 3411

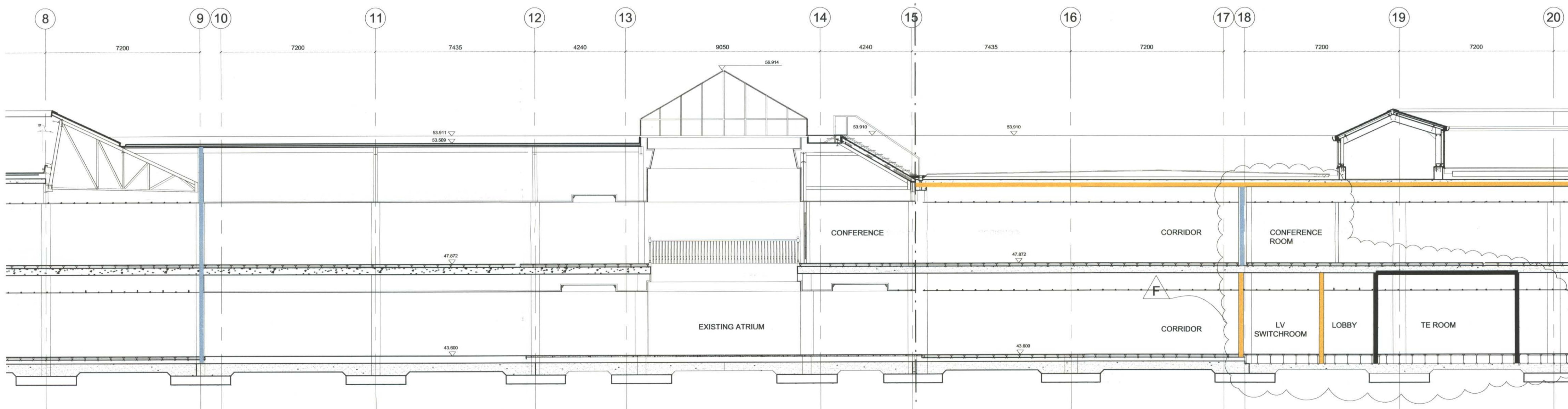




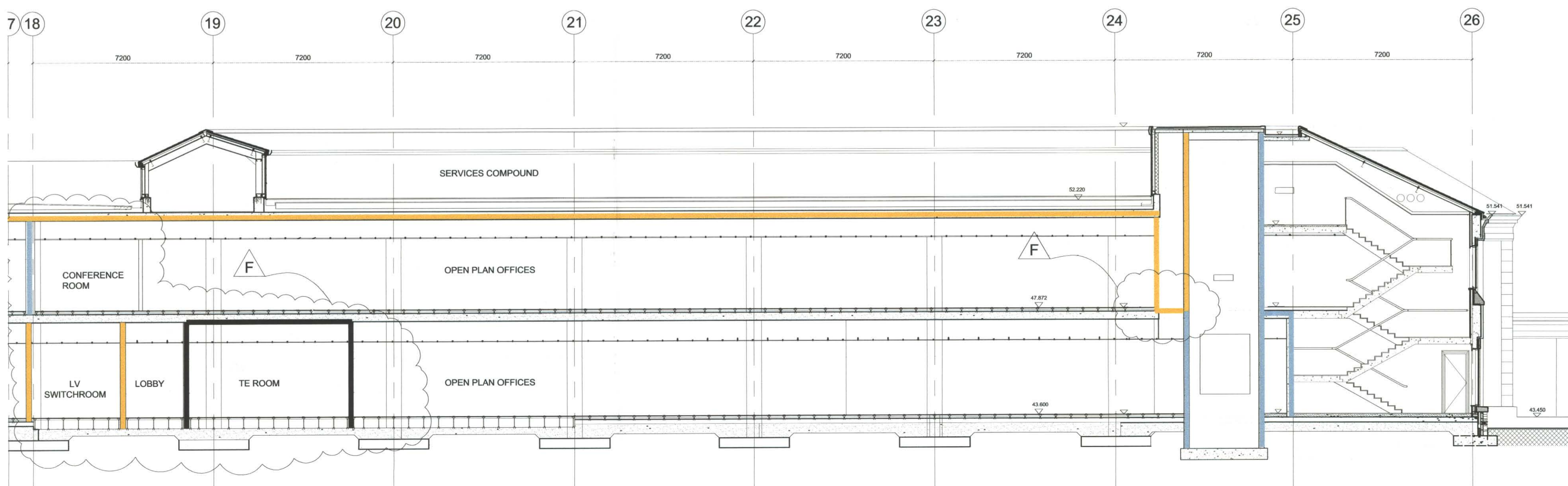
SECTION AA



SECTION BB



SECTION DD - part 1



SECTION DD - part 2

NOTES

Fire Legend

This drawing is for fire safety certification purposes only. Do not scale from drawing - use figured dimensions only. Existing compartment walls are shown dotted.

— Compartment wall/floor achieving 120 minutes fire resistance rating (stability, integrity and insulation) in accordance with BS476: Part 8/20-24 and relevant recommendations of Appendix A of technical Guidance Document B, and in the case of a wall is to extend full storey height.

— Compartment wall/floor achieving 60 minutes fire resistance rating (stability, integrity and insulation) in accordance with BS476: Part 8/20-24 and relevant recommendations of Appendix A of technical Guidance Document B, and in the case of a wall is to extend full storey height.

— Compartment wall/floor achieving 30 minutes fire resistance rating (stability, integrity and insulation) in accordance with BS476: Part 8/20-24 and relevant recommendations of Appendix A of technical Guidance Document B, and in the case of a wall is to extend full storey height.

— 30 minutes fire resistance rating (integrity and insulation) in accordance with BS476: Part 8/20-24 and relevant recommendations of Appendix A of technical Guidance Document B, and in the case of a wall is to extend full storey height.

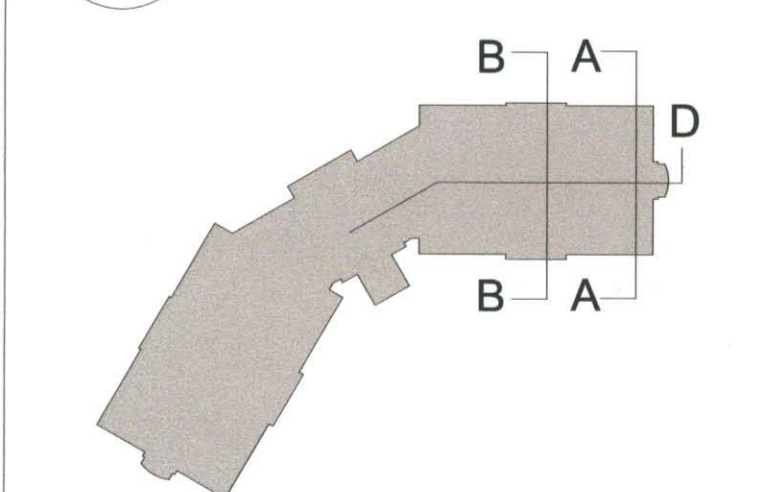
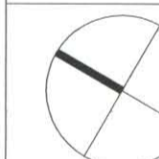
Fire resisting doorset to have not less than 120 minutes integrity rating in accordance with BS476: Part 8/20-22 and to have a leakage rate not exceeding 3m<sup>3</sup>/m/hour (head and jambs) when tested at 25Pa under BS476: Section 31.1. Doorset to be fitted with an automatic self-closing device which is capable of closing this door from any angle and against any latch fitted to the door.

Fire resisting doorset to have not less than 30 minutes integrity rating in accordance with BS476: Part 8/20-22 and to have a leakage rate not exceeding 3m<sup>3</sup>/m/hour (head and jambs) when tested at 25Pa under BS476: Section 31.1. Doorset to be fitted with an automatic self-closing device which is capable of closing this door from any angle and against any latch fitted to the door.

← XX.XXXm Direct distance to place of safety in metres as indicated on the drawings.

→ Location of EXIT signs to be displayed prominently and to be installed according to manufacturers instructions and comply to BSS499, Part 1: 1990.

(H) Fire hydrant



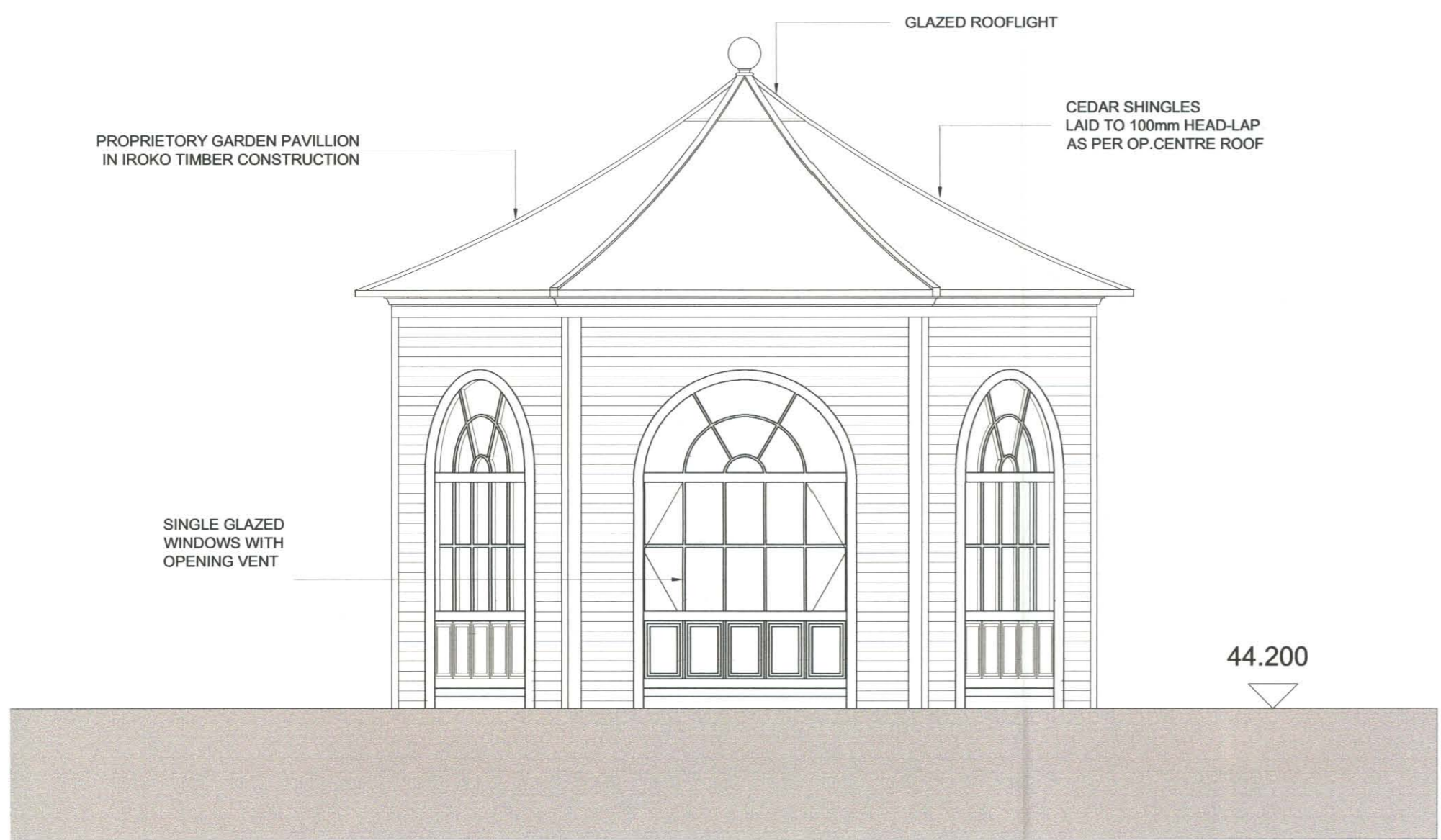
RECEIVED  
10 OCT 2002  
LEITRIM COLLEGE  
FIRE DEPARTMENT

CHOMHAIRLE CHONDAE LIATH  
27 NOV 2002  
OIFIG AN RINIAL

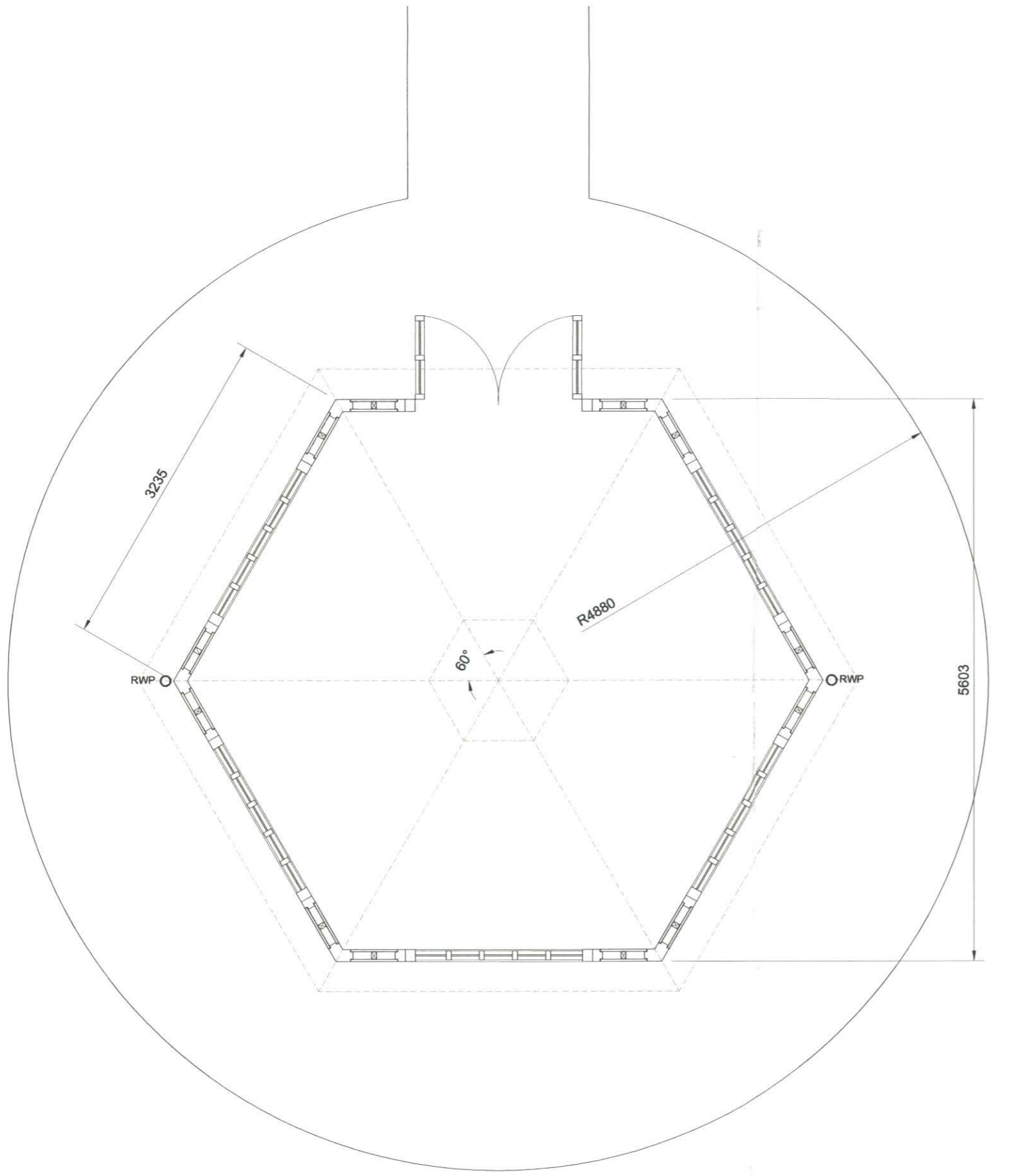
REV F. FIRE STOPPING ADDED TO MECHANICAL RISER SECTION DD AMENDED TO CUT THROUGH TE ROOM  
REV E. FIRE RATING REMOVED

REV	DATE	BY	CHECK	DESCRIPTION
E	10/09/02	NW	PG	
E	10/09/02	NW	PG	
D	03/09/02	NW	PG	
C	14/02/02	SH	PG	
B	17/11/01	SH	PG	
A	17/10/01	SH	PG	
REV	18/09/01	SH	PG	

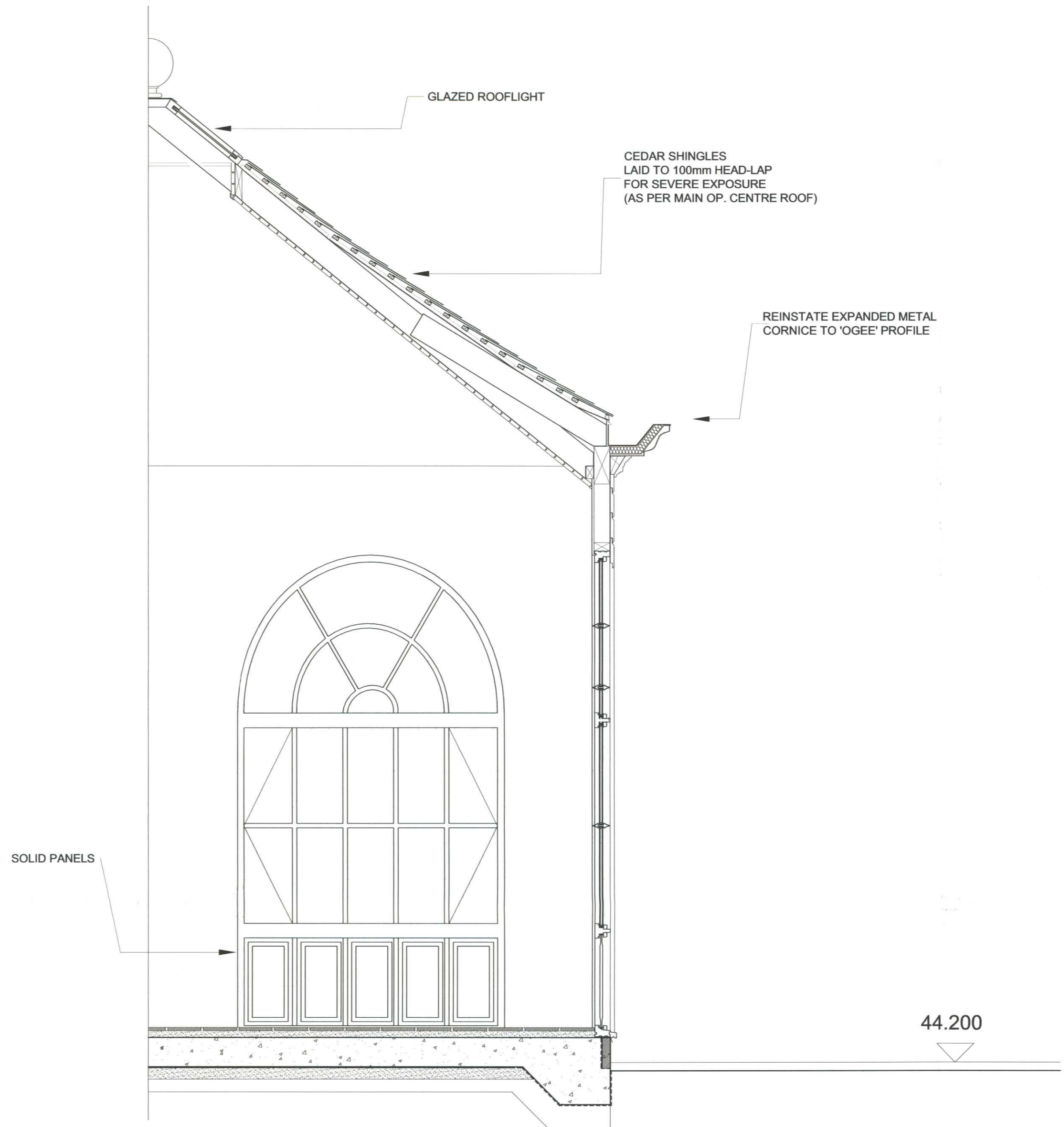
PROJECT: MBNA - Carrick on Shannon  
TITLE: MBNA Operations Centre, Ph.2 Fire Strategy - Sections  
PROJECT NO: 1438  
DRAWING NO: IRL/CoSIARC/S-04/F  
CONSULTANT: IRL/CoSIARC/S-04/F



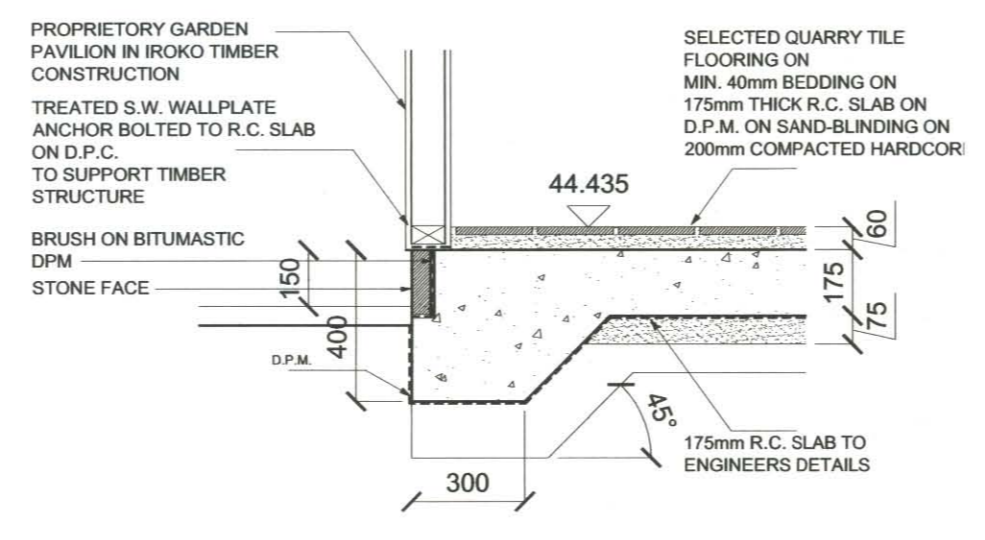
01 ELEVATION  
SCALE 1:50



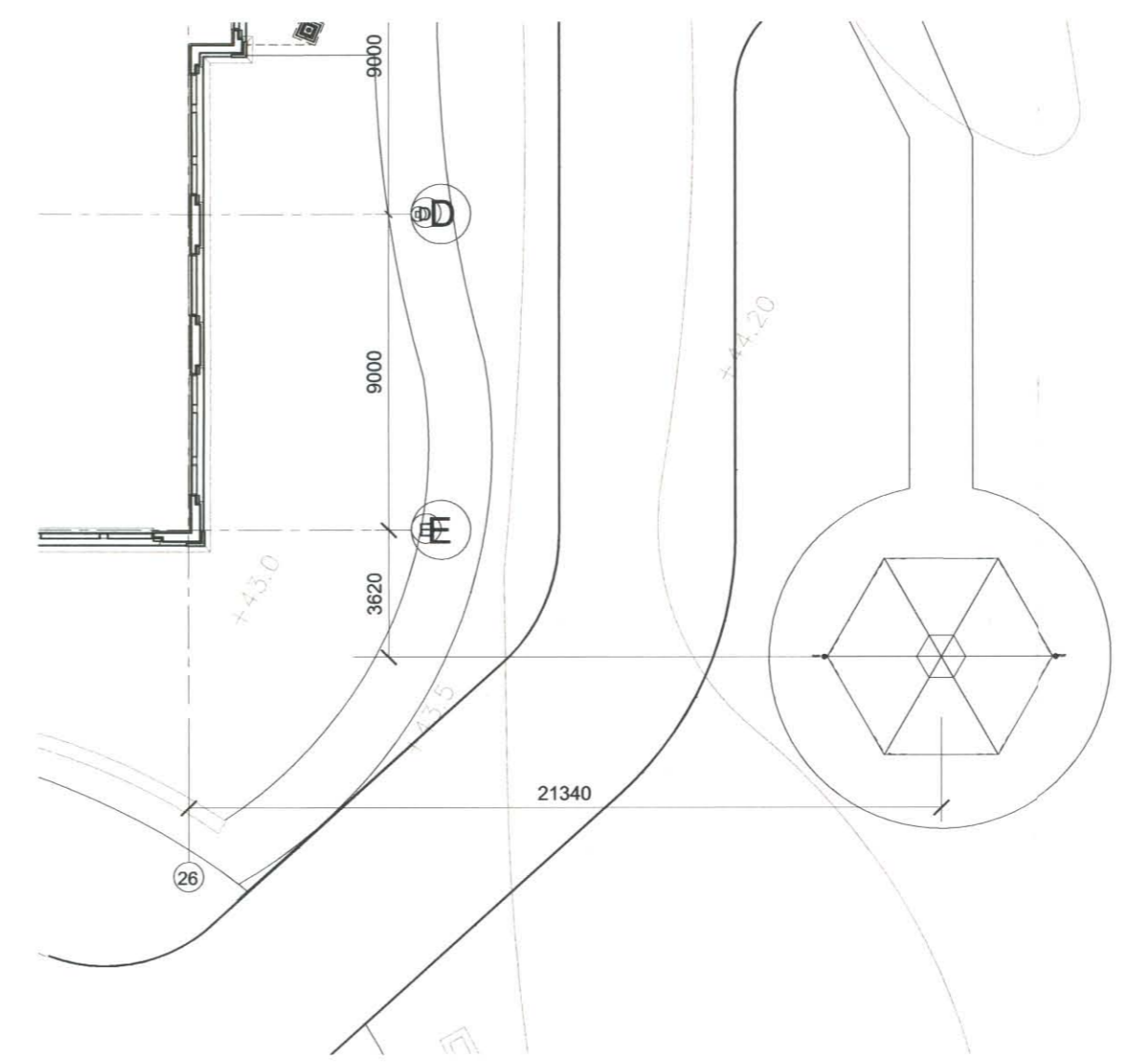
02 PLAN  
SCALE 1:50



03 SECTION  
SCALE 1:20



04 DETAIL SECTION  
SCALE 1:10



05 LOCATION PLAN  
SCALE 1:200

NOTES

USE FIGURED DIMENSIONS ONLY - DO NOT SCALE OFF DRAWING



Rev.B. Planters and trellises removed  
Rev.A. Location Plan added.

REV	DATE	BY	CHECK
A	07/05/02	MG	PG
B	07/10/02	NW	PG
REV	DATE	BY	CHECK
A	18/09/01	SH	PG
OUTLINE <input type="checkbox"/> PLANNING <input type="checkbox"/> TENDER <input checked="" type="checkbox"/> CONTRACT <input type="checkbox"/>			
PROJECT MBNA - Carrick on Shannon			
TITLE MBNA Operations Centre, Ph.2 Smoking Pavilion			
PROJECT NO 1438			
DRAWING NO IRL/CoS/ARC/V - 06			
REVISION B			
CONSULTANT			

**DA DYER ASSOCIATES**  
LAURENCE COURT - MONTELEONE STREET - CHELTENHAM - GLOS TSIE - TEL +44 (0)1242 534463  
88 GRAYS INN ROAD - LONDON - WC1X 8AA - TEL +44 (0)20 7663 2880  
3 ELY PLACE - DUBLIN - 2 - EIRE - TEL +353 (0) 1462 3611